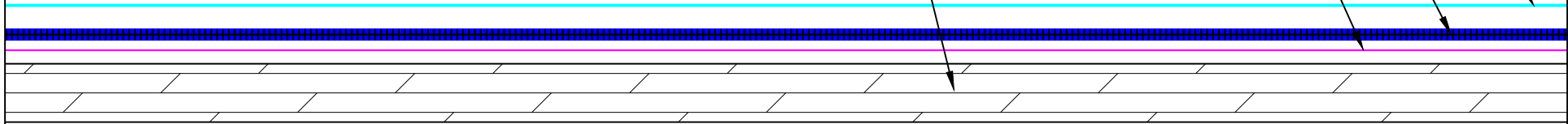


CA TITLE 24 COOL ROOF REFLECTIVE COATING
(2 COATS @ 1.5 GAL. = 3 GAL. / 100 SQ.FT.)

SPECIFIED FLUID APPLIED ROOF MEMBRANE
30 GAL / 100 SQ. FT. ASPHALT EMULSION
16 LBS / 100 SQ. FT. FIBERGLASS ROVING

INVERTED MINERAL SURFACED CAP SHEET APPLIED
WITH APPROVED FASTENERS

EXISTING WOOD DECK



Roof System:
NCN-1B-16-30-A

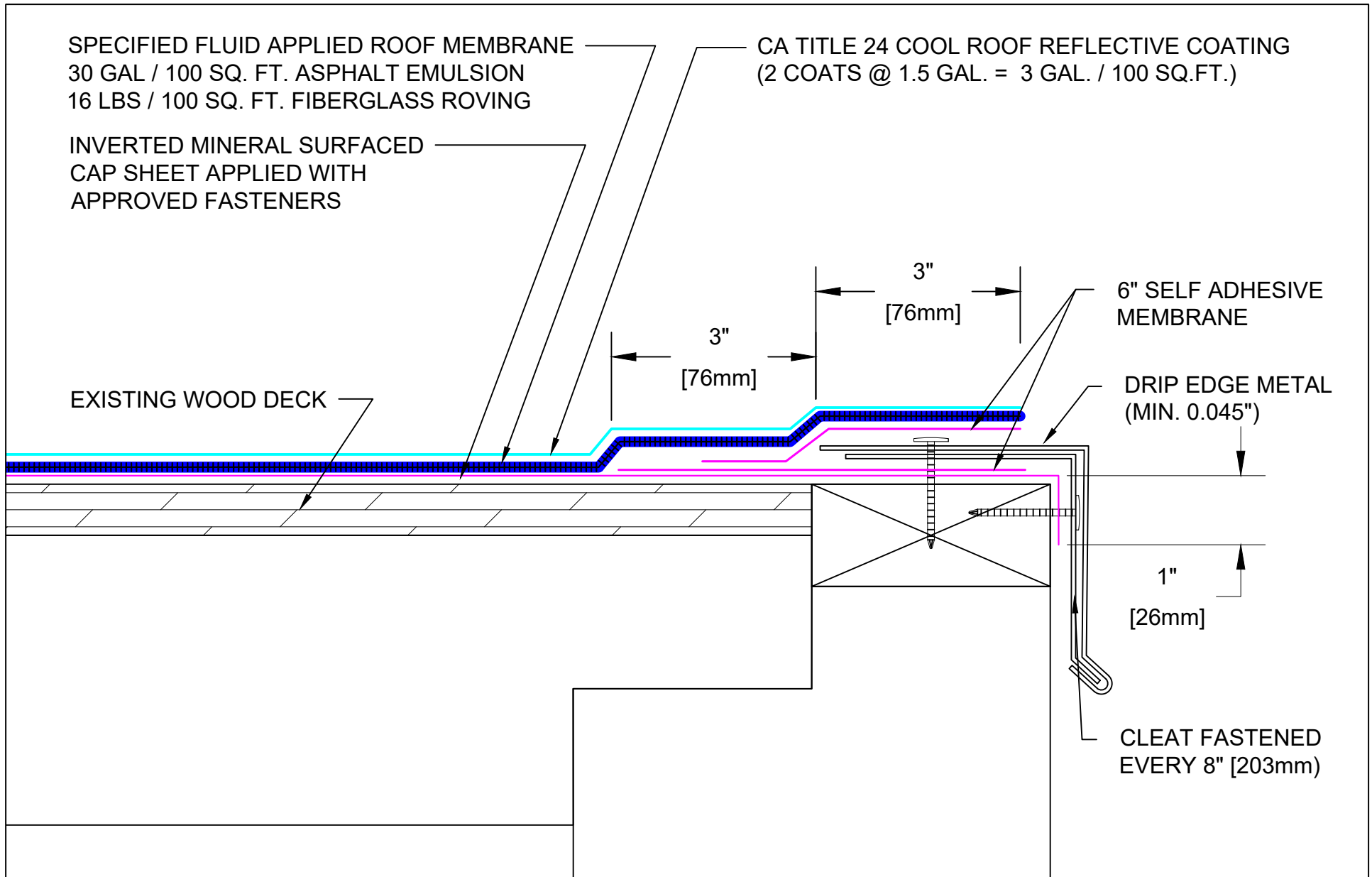



9757 7th Street, Suite 803
Rancho Cucamonga, CA 91730-5297
(888) 440-3224 | www.weatherweld.com

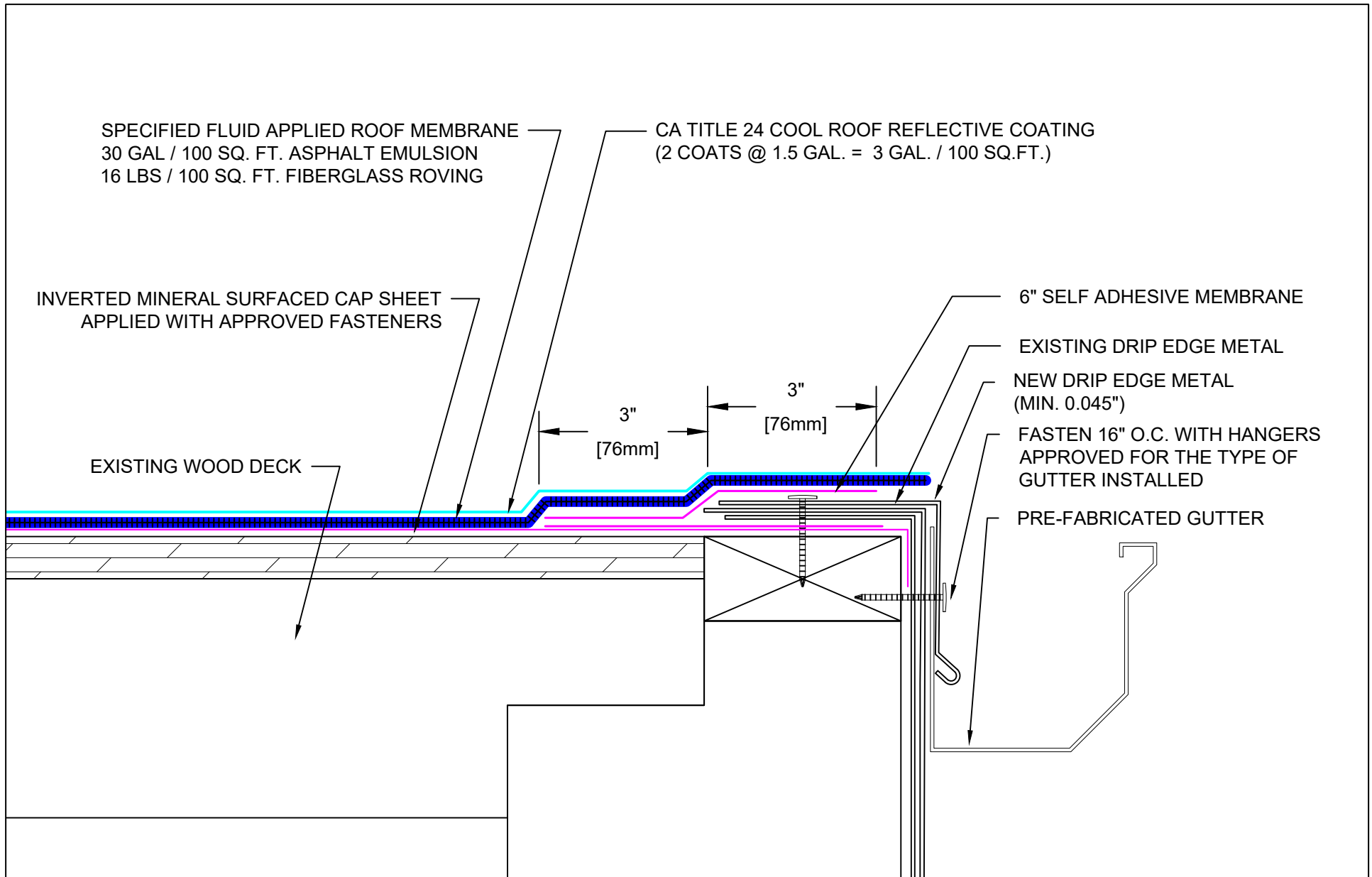
PROJECT:			
DRAWN BY: RW	CONTRACTOR:		
APPROVED BY: MJ	INSTALLED BY:	DATE: 3/26/25	SCALE: NTS


DRAWING TITLE:
SYSTEM OVERVIEW

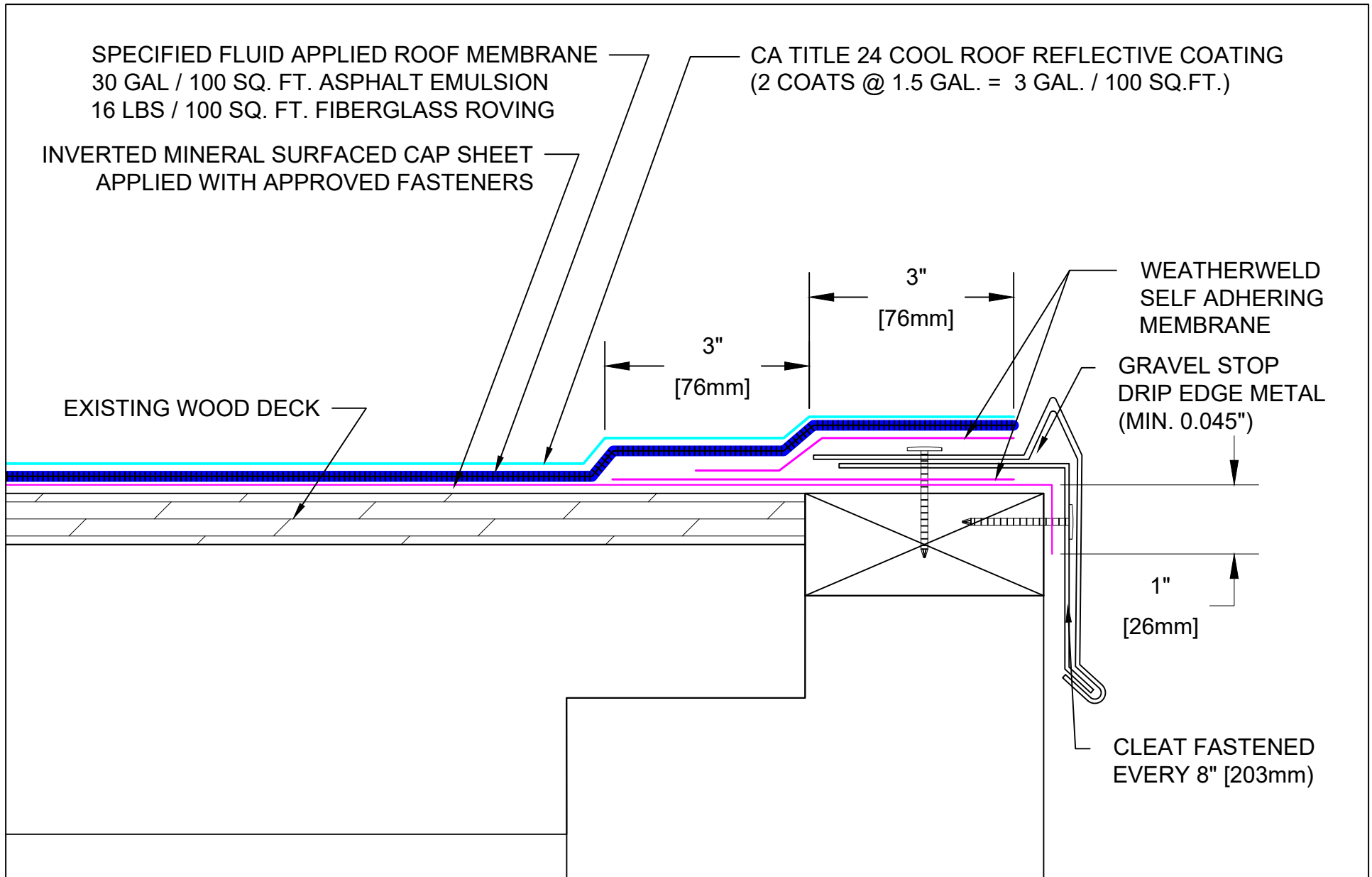
DETAIL NUMBER:
101



Roof System: <h1 style="margin: 0;">NCN-1B-16-30-A</h1>	 WEATHERWELD <small>ROOFING MADE SIMPLE</small> <small>A DIVISION OF LIQUIFORM TECHNOLOGIES, INC.</small>	9757 7 th Street, Suite 803 Rancho Cucamonga, CA 91730-5297 (888) 440-3224 www.weatherweld.com	PROJECT: 								
	DRAWING TITLE: <h2 style="margin: 0;">EDGE FLASHING</h2>	DETAIL NUMBER: <h2 style="margin: 0;">201</h2>	<table border="1" style="width: 100%; border-collapse: collapse;"> <tr> <td data-bbox="1449 1421 1575 1469">DRAWN BY: RW</td> <td colspan="3" data-bbox="1575 1421 2009 1469">CONTRACTOR:</td> </tr> <tr> <td data-bbox="1449 1469 1575 1526">APPROVED BY: MJ</td> <td data-bbox="1575 1469 1722 1526">INSTALLED BY: TBD</td> <td data-bbox="1722 1469 1848 1526">DATE: 3/26/25</td> <td data-bbox="1848 1469 2009 1526">SCALE: 6" = 1'-0"</td> </tr> </table>	DRAWN BY: RW	CONTRACTOR:			APPROVED BY: MJ	INSTALLED BY: TBD	DATE: 3/26/25	SCALE: 6" = 1'-0"
DRAWN BY: RW	CONTRACTOR:										
APPROVED BY: MJ	INSTALLED BY: TBD	DATE: 3/26/25	SCALE: 6" = 1'-0"								



Roof System: <h1 style="margin: 0;">NCN-1B-16-30-A</h1>	 WEATHERWELD <small>ROOFING MADE SIMPLE</small> <small>A DIVISION OF LIQUIFORM TECHNOLOGIES, INC.</small> 9757 7 th Street, Suite 803 Rancho Cucamonga, CA 91730-5297 (888) 440-3224 www.weatherweld.com	PROJECT: 								
DRAWING TITLE: <h2 style="margin: 0;">GUTTER EDGE FLASHING - RETROFIT</h2>	DETAIL NUMBER: <h1 style="margin: 0;">205</h1>	<table border="1" style="width: 100%; border-collapse: collapse;"> <tr> <td data-bbox="1459 1421 1585 1469">DRAWN BY: RW</td> <td colspan="3" data-bbox="1585 1421 2009 1469">CONTRACTOR:</td> </tr> <tr> <td data-bbox="1459 1469 1585 1528">APPROVED BY: MJ</td> <td data-bbox="1585 1469 1722 1528">INSTALLED BY: TBD</td> <td data-bbox="1722 1469 1858 1528">DATE: 3/26/25</td> <td data-bbox="1858 1469 2009 1528">SCALE: NTS</td> </tr> </table>	DRAWN BY: RW	CONTRACTOR:			APPROVED BY: MJ	INSTALLED BY: TBD	DATE: 3/26/25	SCALE: NTS
DRAWN BY: RW	CONTRACTOR:									
APPROVED BY: MJ	INSTALLED BY: TBD	DATE: 3/26/25	SCALE: NTS							



Roof System:

NCN-1B-16-30-A

WEATHERWELD
 ROOFING MADE SIMPLE
A DIVISION OF LIQUIFORM TECHNOLOGIES, INC.

9757 7th Street, Suite 803
 Rancho Cucamonga, CA 91730-5297
 (888) 440-3224 | www.weatherweld.com

DRAWING TITLE:
EDGE TERMINATION W/ GRAVEL STOP

DETAIL NUMBER:
207

PROJECT:

DRAWN BY:
 RW

CONTRACTOR:

APPROVED BY:
 MJ

INSTALLED BY:
 TBD

DATE:
 3/26/25

SCALE:
 NTS

COPING CAP
 EXTERIOR GRADE NAILER
 CA TITLE 24 COOL ROOF REFLECTIVE COATING
 (2 COATS @ 1.5 GAL. = 3 GAL. / 100 SQ.FT.)

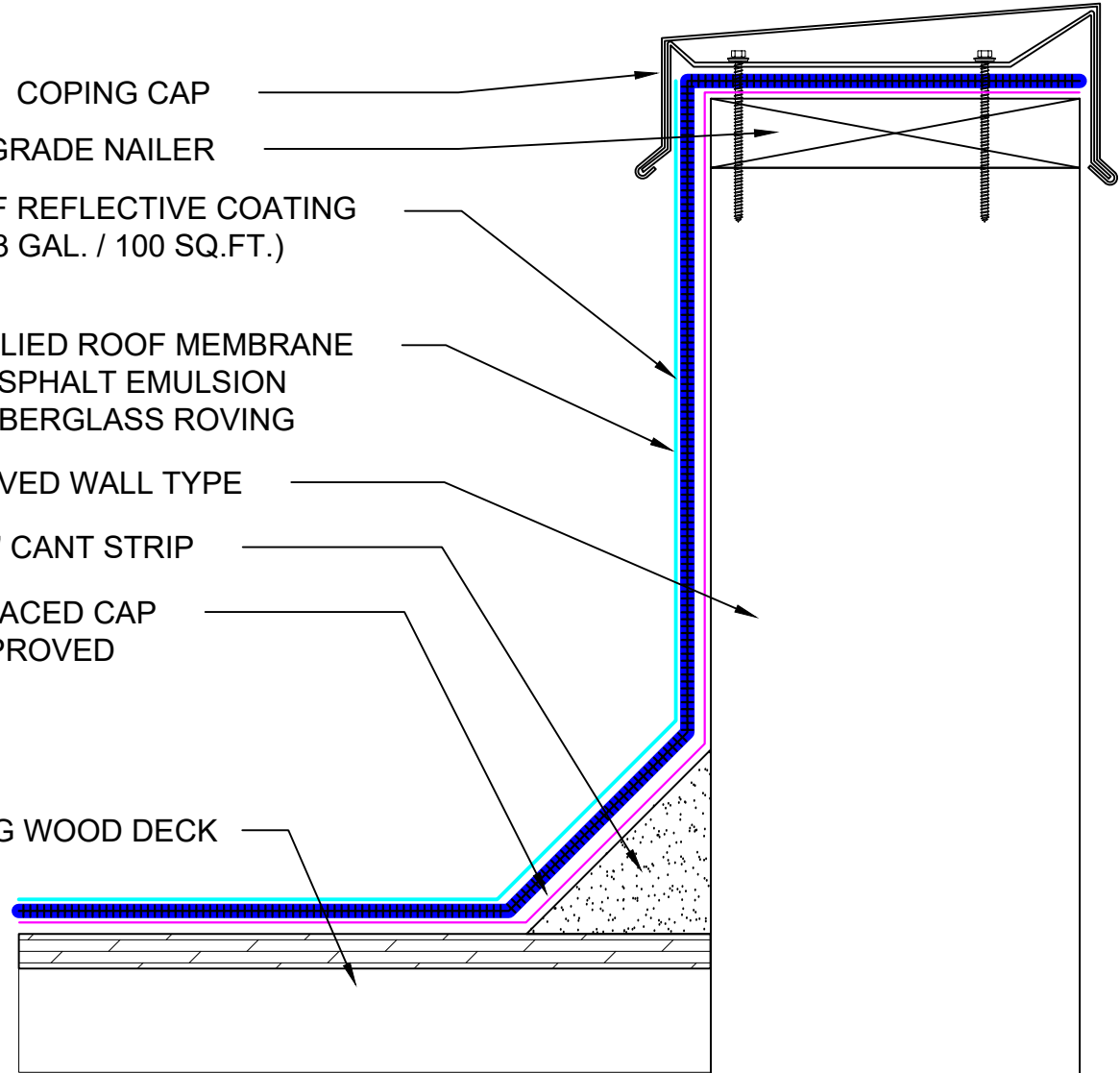
SPECIFIED FLUID APPLIED ROOF MEMBRANE
 30 GAL / 100 SQ. FT. ASPHALT EMULSION
 16 LBS / 100 SQ. FT. FIBERGLASS ROVING

APPROVED WALL TYPE

4" CANT STRIP

INVERTED MINERAL SURFACED CAP
 SHEET APPLIED WITH APPROVED
 FASTENERS

EXISTING WOOD DECK



Roof System:

NCN-1B-16-30-A



9757 7th Street, Suite 803
 Rancho Cucamonga, CA 91730-5297
 (888) 440-3224 | www.weatherweld.com

PROJECT:

DRAWING TITLE:

COPING CAP FLASHING

DETAIL NUMBER:

301

DRAWN BY:

RW

CONTRACTOR:

APPROVED BY:

MJ

INSTALLED BY:

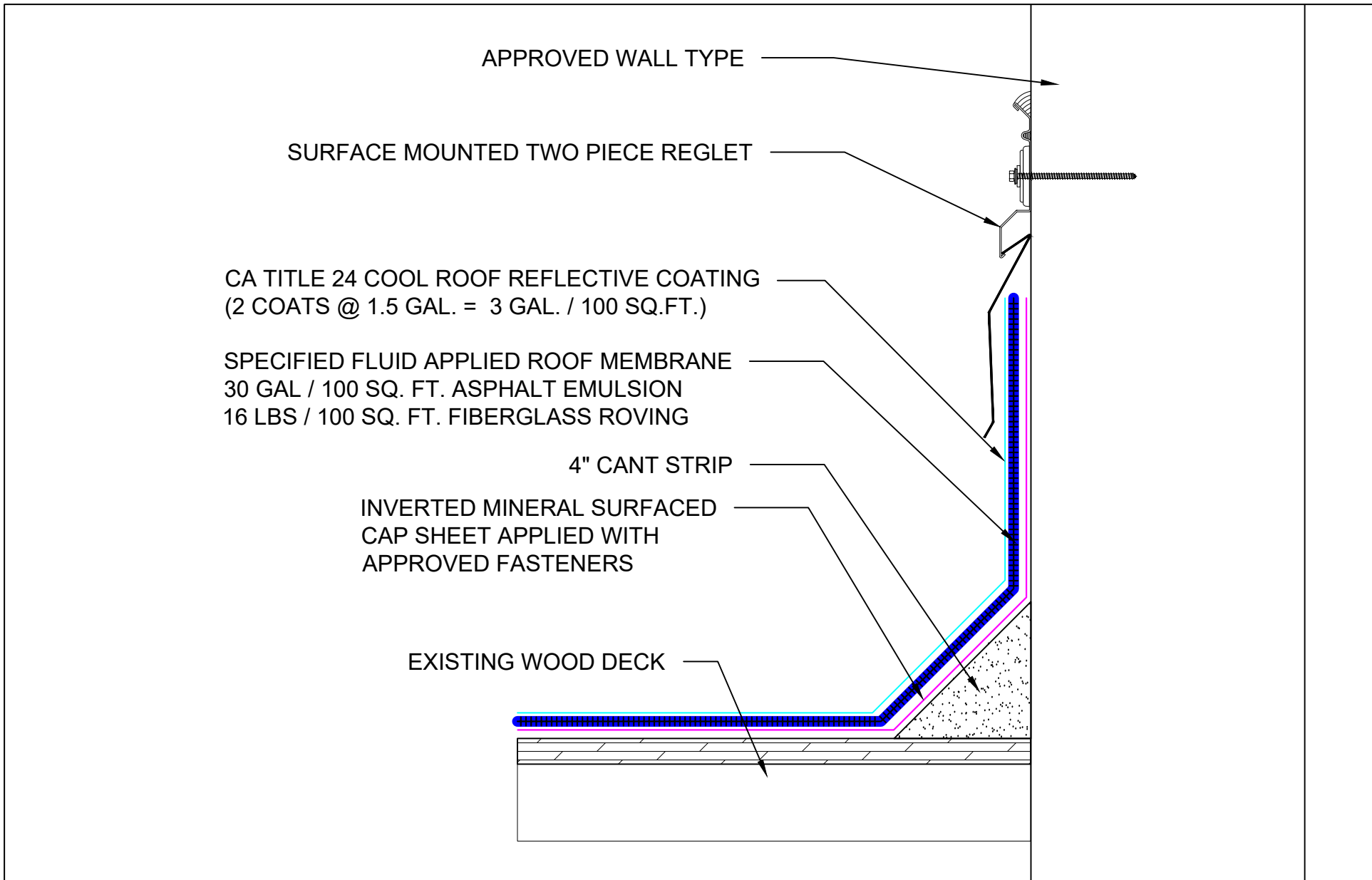
TBD

DATE:

3/26/25

SCALE:

3" = 1'-0"



Roof System:

NCN-1B-16-30-A

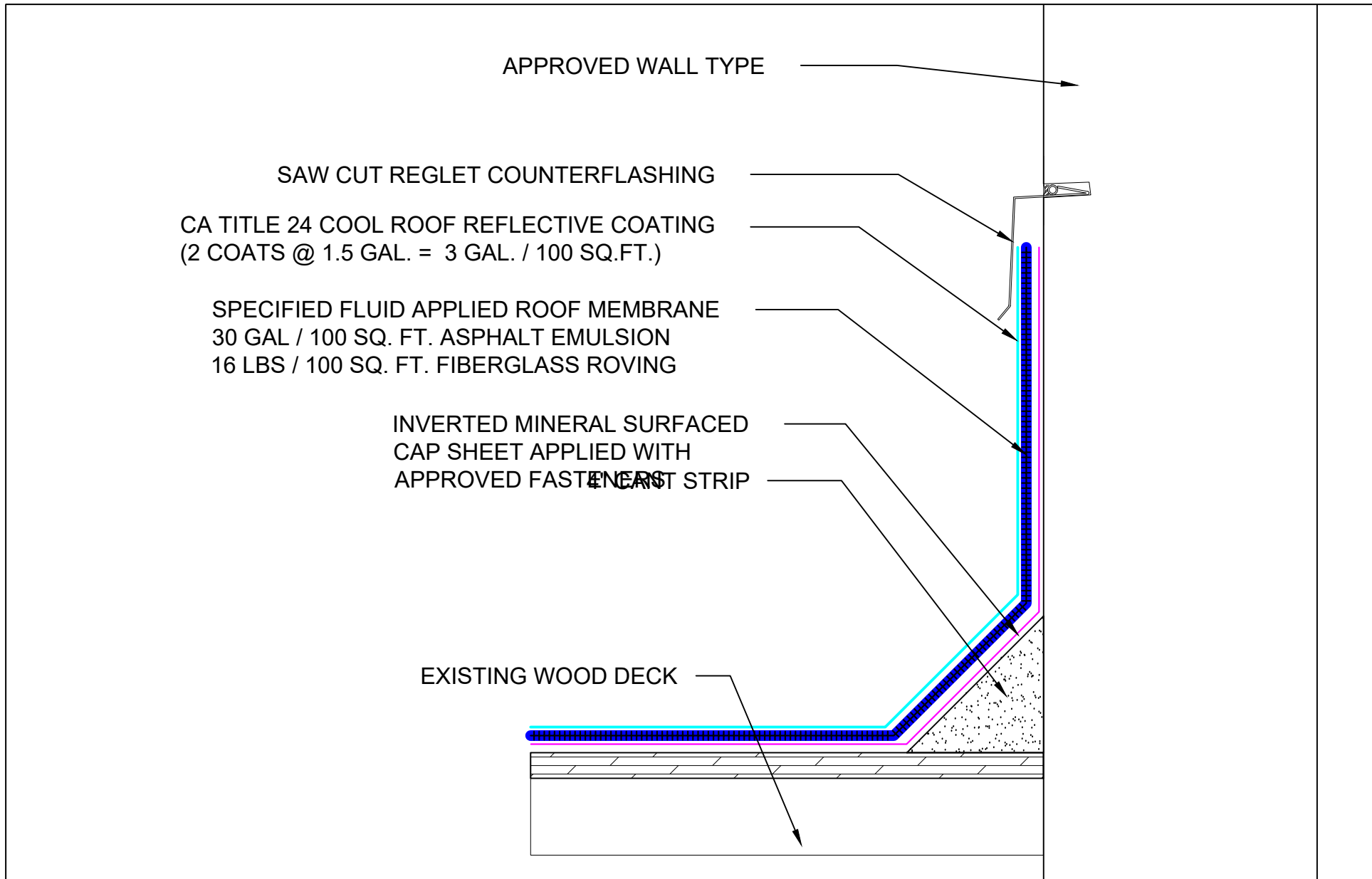



9757 7th Street, Suite 803
Rancho Cucamonga, CA 91730-5297
(888) 440-3224 | www.weatherweld.com

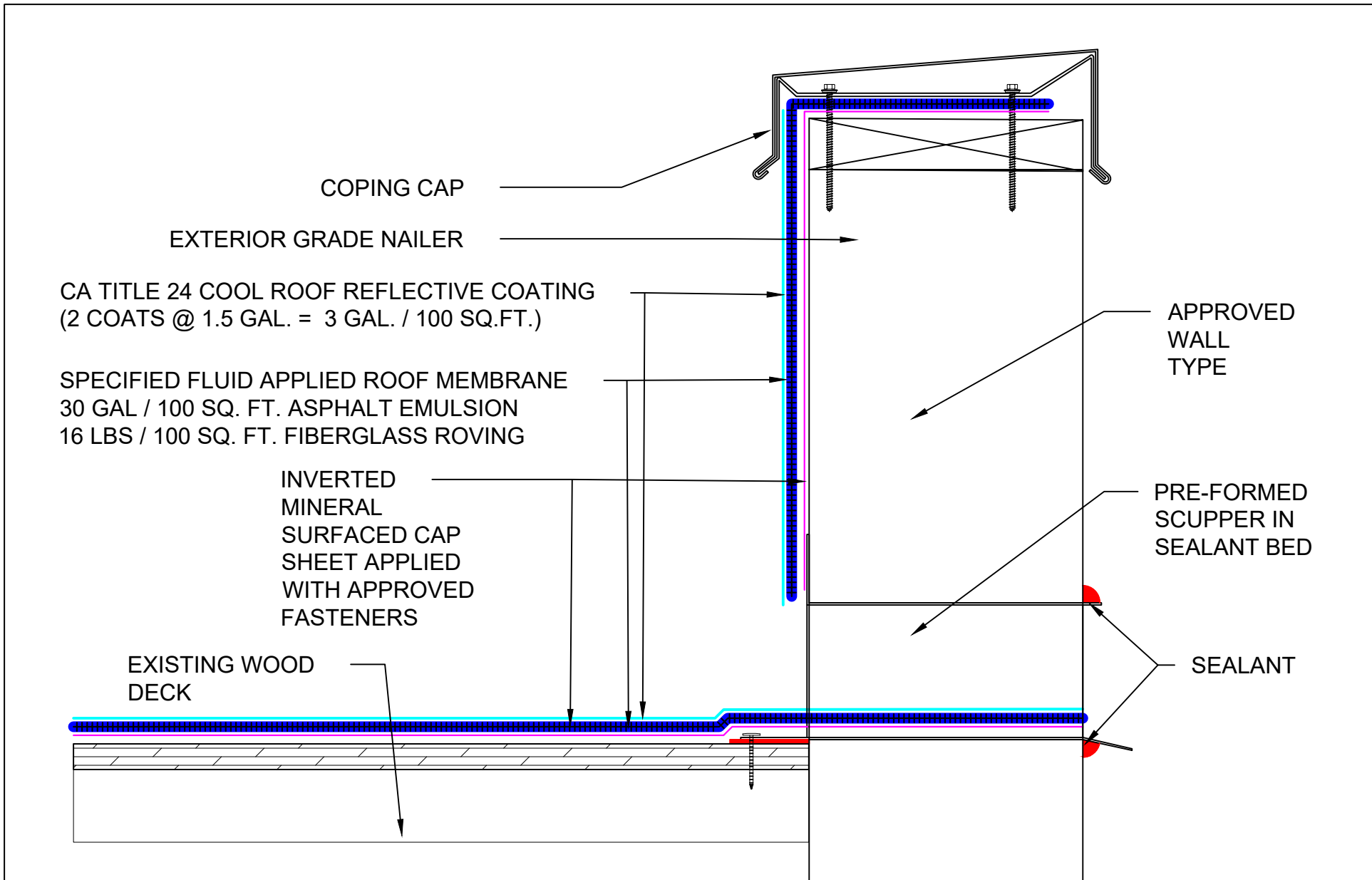
PROJECT:			
DRAWN BY:	CONTRACTOR:		
RW			
APPROVED BY:	INSTALLED BY:	DATE:	SCALE:
MJ	TBD	3/26/25	3" = 1'-0"

DRAWING TITLE: SURFACE MOUNTED REGLET

DETAIL NUMBER: 302



Roof System: <h1 style="margin: 0;">NCN-1B-16-30-A</h1>	 WEATHERWELD <small>ROOFING MADE SIMPLE</small> <small>A DIVISION OF LIQUIFORM TECHNOLOGIES, INC.</small> 9757 7 th Street, Suite 803 Rancho Cucamonga, CA 91730-5297 (888) 440-3224 www.weatherweld.com	PROJECT:			
DRAWING TITLE: <h2 style="margin: 0;">SAW CUT REGLET</h2>	DETAIL NUMBER: <h2 style="margin: 0;">303</h2>	DRAWN BY: RW	CONTRACTOR:		
		APPROVED BY: MJ	INSTALLED BY: TBD	DATE: 3/26/25	SCALE: 3" = 1'-0"



Roof System:

NCN-1B-16-30-A



9757 7th Street, Suite 803
 Rancho Cucamonga, CA 91730-5297
 (888) 440-3224 | www.weatherweld.com

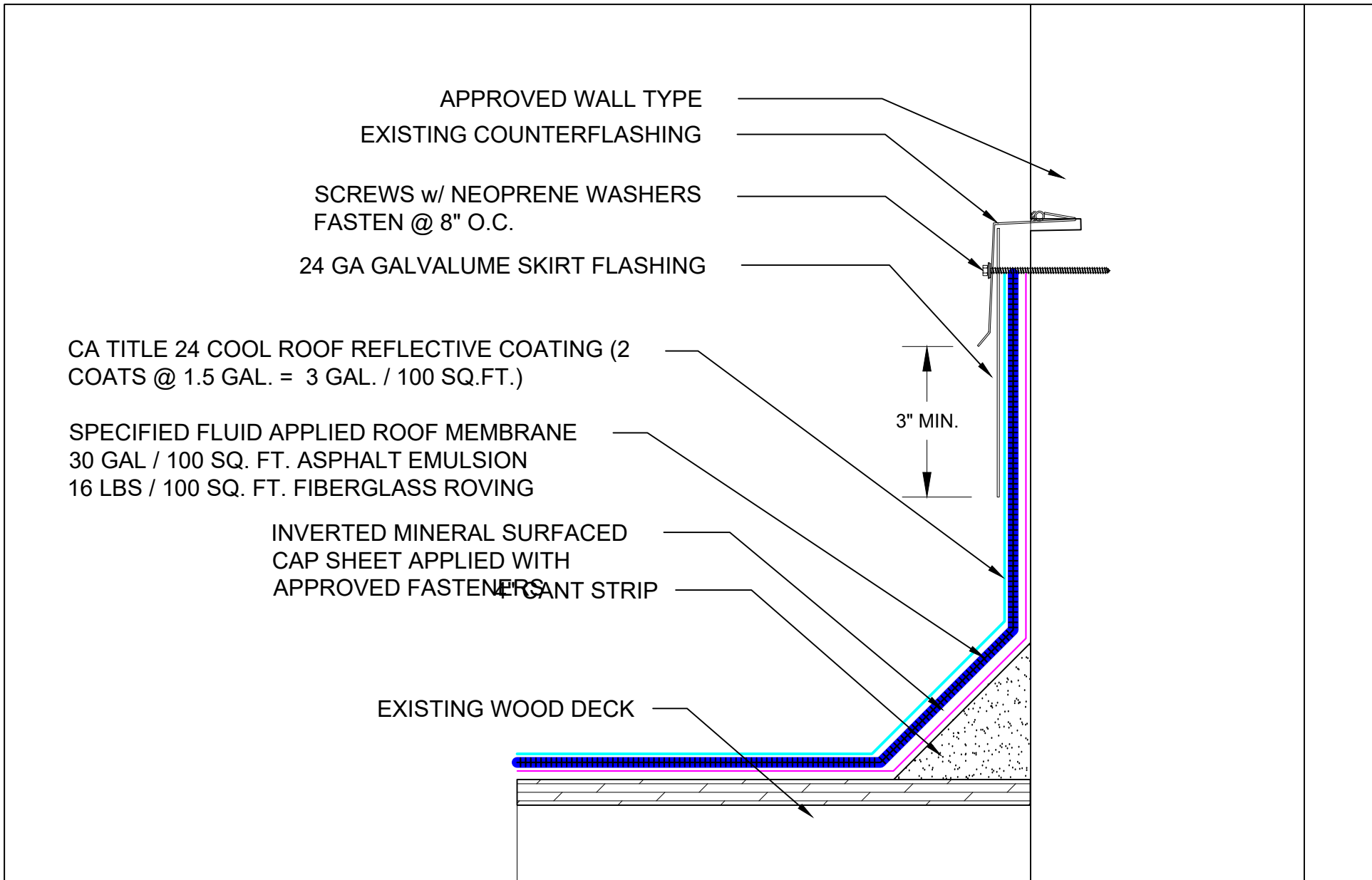
PROJECT:

DRAWN BY: RW
 CONTRACTOR:

DRAWING TITLE: **THRU WALL SCUPPER FLASHING**

DETAIL NUMBER: **306**

APPROVED BY: MJ
 INSTALLED BY: TBD
 DATE: 3/26/25
 SCALE: 3" = 1'-0"



Roof System:
NCN-1B-16-30-A

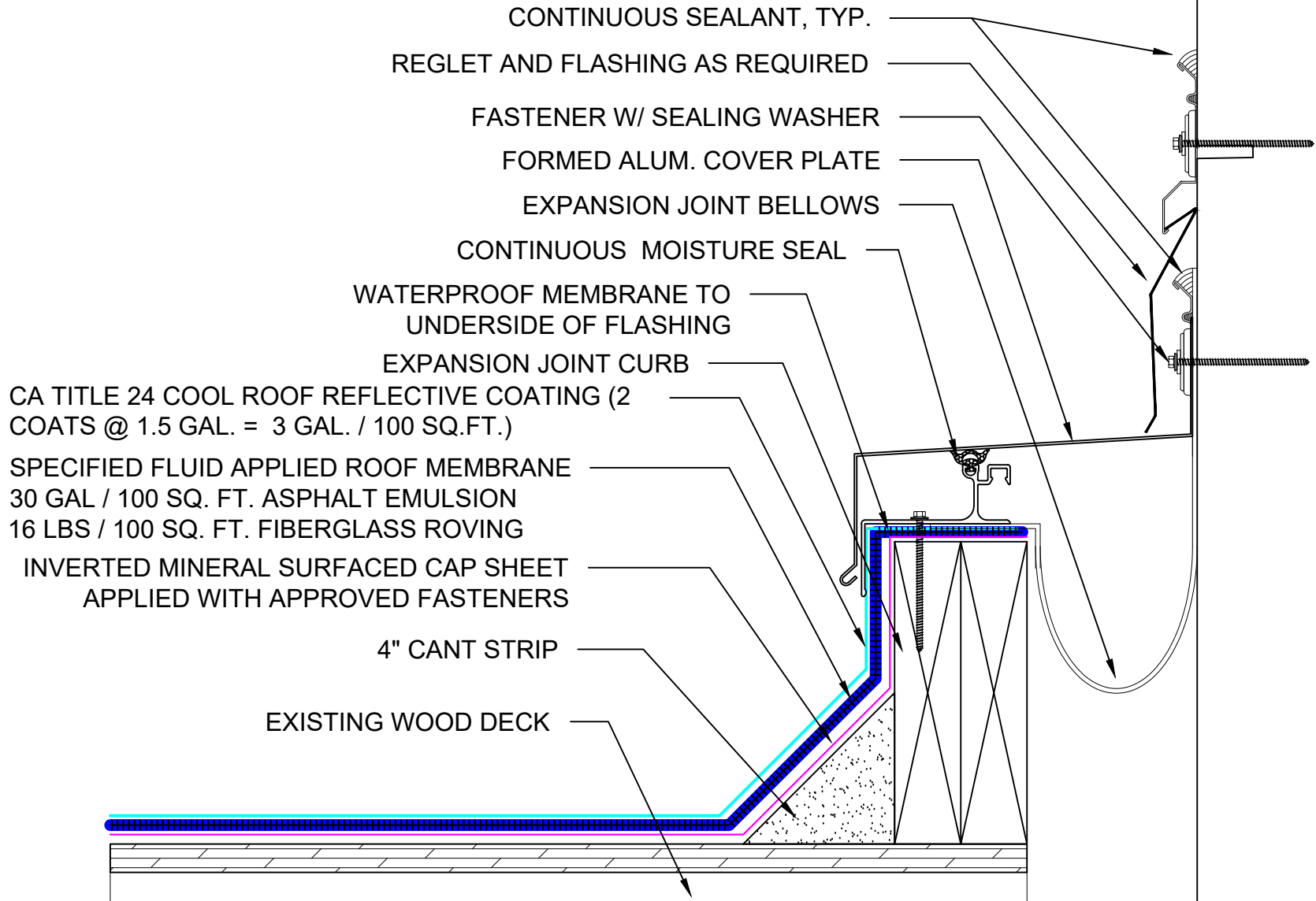
WEATHERWELD
ROOFING MADE SIMPLE
A DIVISION OF LIQUIFORM TECHNOLOGIES, INC.

9757 7th Street, Suite 803
Rancho Cucamonga, CA 91730-5297
(888) 440-3224 | www.weatherweld.com

DRAWING TITLE: **SKIRTED COUNTERFLASHING**

DETAIL NUMBER: **307**

PROJECT:			
DRAWN BY: RW	CONTRACTOR:		
APPROVED BY: MJ	INSTALLED BY: TBD	DATE: 3/26/25	SCALE: 3" = 1'-0"



CONTINUOUS SEALANT, TYP.
 REGLET AND FLASHING AS REQUIRED
 FASTENER W/ SEALING WASHER
 FORMED ALUM. COVER PLATE
 EXPANSION JOINT BELLOWS
 CONTINUOUS MOISTURE SEAL
 WATERPROOF MEMBRANE TO
 UNDERSIDE OF FLASHING
 EXPANSION JOINT CURB

CA TITLE 24 COOL ROOF REFLECTIVE COATING (2
 COATS @ 1.5 GAL. = 3 GAL. / 100 SQ.FT.)

SPECIFIED FLUID APPLIED ROOF MEMBRANE
 30 GAL / 100 SQ. FT. ASPHALT EMULSION
 16 LBS / 100 SQ. FT. FIBERGLASS ROVING

INVERTED MINERAL SURFACED CAP SHEET
 APPLIED WITH APPROVED FASTENERS

4" CANT STRIP

EXISTING WOOD DECK

Roof System:

NCN-1B-16-30-A



9757 7th Street, Suite 803
 Rancho Cucamonga, CA 91730-5297
 (888) 440-3224 | www.weatherweld.com

PROJECT:			
DRAWN BY: RW	CONTRACTOR:		
APPROVED BY: MJ	INSTALLED BY: TBD	DATE: 3/26/25	SCALE: 3" = 1'-0"

DRAWING TITLE:
ROOF TO WALL EXPANSION JOINT

DETAIL NUMBER:
308

COPING CAP
 SCREWS w/ NEOPRENE WASHERS - FASTEN @ 8" O.C.

24 GA GALVALUME SKIRT FLASHING

CA TITLE 24 COOL ROOF REFLECTIVE COATING
 (2 COATS @ 1.5 GAL. = 3 GAL. / 100 SQ.FT.)

SPECIFIED FLUID APPLIED ROOF MEMBRANE
 30 GAL / 100 SQ. FT. ASPHALT EMULSION
 16 LBS / 100 SQ. FT. FIBERGLASS ROVING

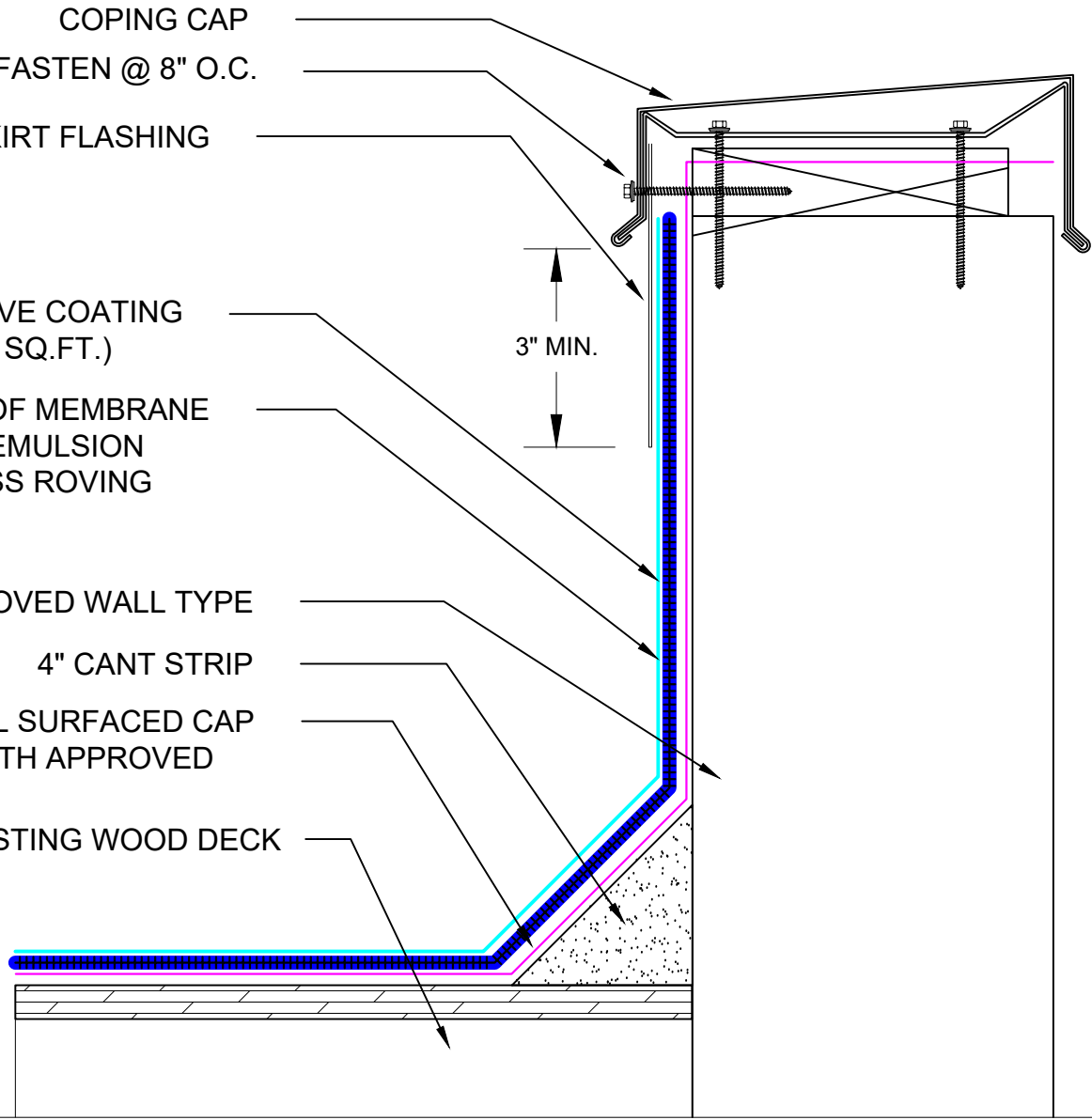
APPROVED WALL TYPE

4" CANT STRIP

INVERTED MINERAL SURFACED CAP SHEET APPLIED WITH APPROVED FASTENERS

EXISTING WOOD DECK

3" MIN.



Roof System:

NCN-1B-16-30-A



DRAWING TITLE:

SKIRTED COPING CAP

9757 7th Street, Suite 803
 Rancho Cucamonga, CA 91730-5297
 (888) 440-3224 | www.weatherweld.com

DETAIL NUMBER:

309

PROJECT:

DRAWN BY:
RW

CONTRACTOR:

APPROVED BY:
MJ

INSTALLED BY:
TBD

DATE:
3/26/25

SCALE:
3" = 1'-0"

EXPANSION JOINT COVER - INSTALLED IN ACCORDANCE WITH MANUFACTURER'S RECOMMENDATIONS

EXPANSION JOINT CURB

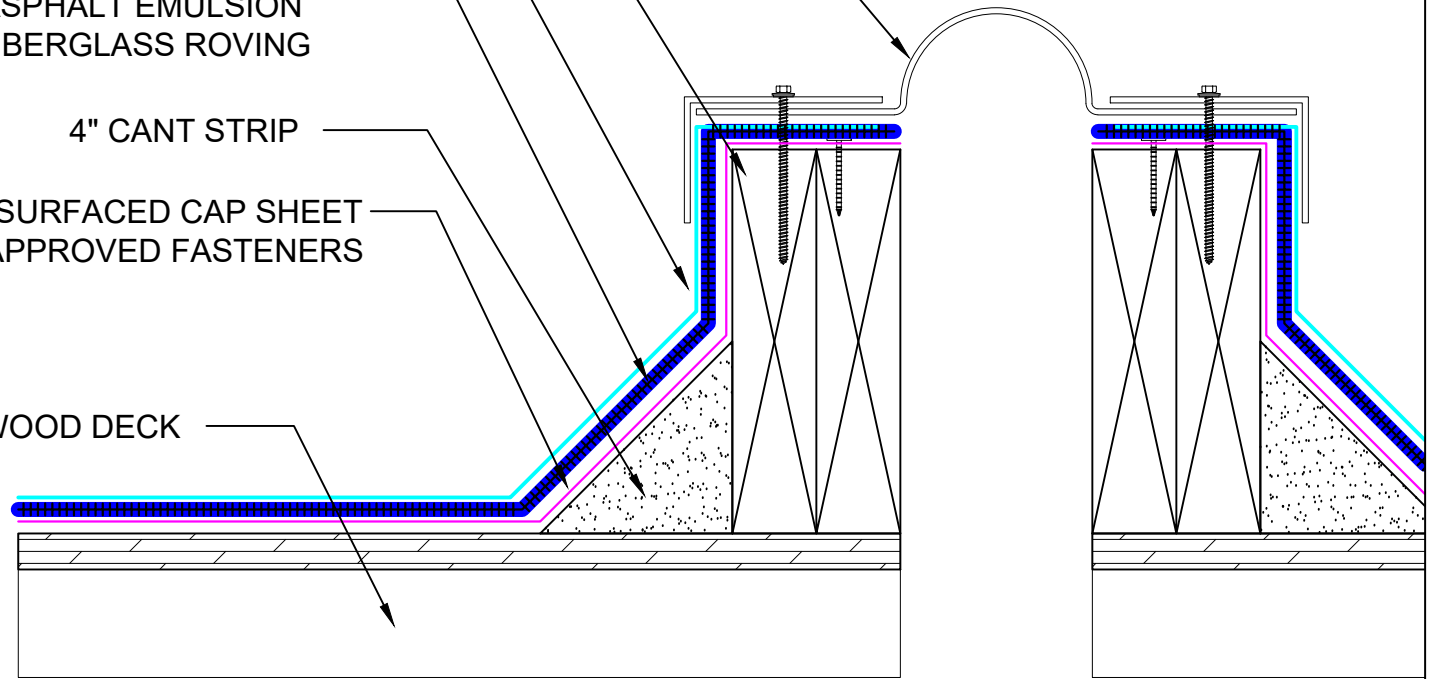
CA TITLE 24 COOL ROOF REFLECTIVE COATING
(2 COATS @ 1.5 GAL. = 3 GAL. / 100 SQ.FT.)

SPECIFIED FLUID APPLIED ROOF MEMBRANE
30 GAL / 100 SQ. FT. ASPHALT EMULSION
16 LBS / 100 SQ. FT. FIBERGLASS ROVING

4" CANT STRIP

INVERTED MINERAL SURFACED CAP SHEET
APPLIED WITH APPROVED FASTENERS

EXISTING WOOD DECK



Roof System:

NCN-1B-16-30-A



9757 7th Street, Suite 803
Rancho Cucamonga, CA 91730-5297
(888) 440-3224 | www.weatherweld.com

PROJECT:

DRAWING TITLE:

EXPANSION JOINT

DETAIL NUMBER:

401

DRAWN BY:

RW

CONTRACTOR:

APPROVED BY:

MJ

INSTALLED BY:

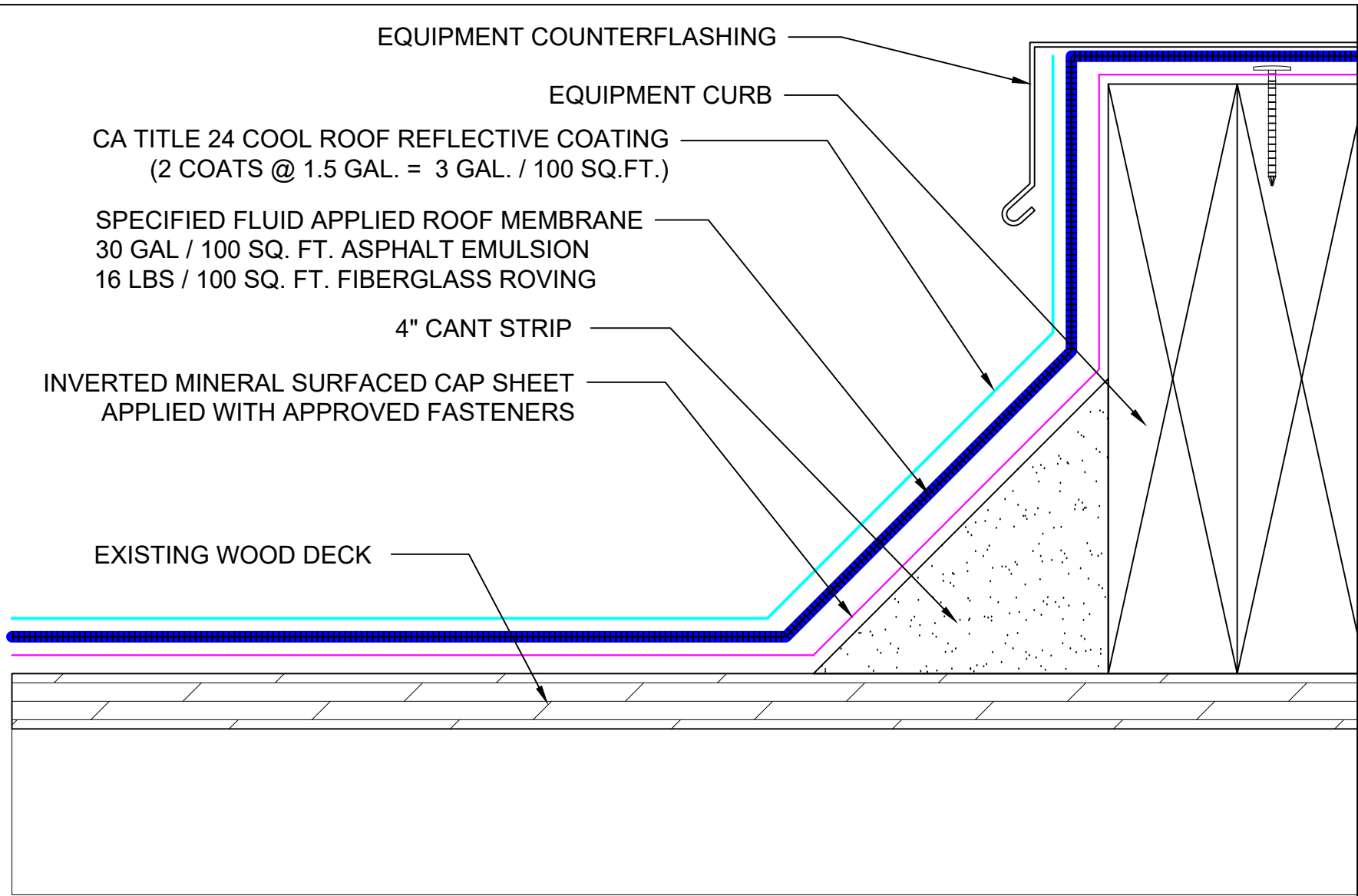
TBD

DATE:

3/26/25

SCALE:

3" = 1'-0"



EQUIPMENT COUNTERFLASHING

EQUIPMENT CURB

CA TITLE 24 COOL ROOF REFLECTIVE COATING
(2 COATS @ 1.5 GAL. = 3 GAL. / 100 SQ.FT.)

SPECIFIED FLUID APPLIED ROOF MEMBRANE
30 GAL / 100 SQ. FT. ASPHALT EMULSION
16 LBS / 100 SQ. FT. FIBERGLASS ROVING

4" CANT STRIP

INVERTED MINERAL SURFACED CAP SHEET
APPLIED WITH APPROVED FASTENERS

EXISTING WOOD DECK

Roof System:

NCN-1B-16-30-A



9757 7th Street, Suite 803
Rancho Cucamonga, CA 91730-5297
(888) 440-3224 | www.weatherweld.com

PROJECT:

DRAWING TITLE:

EQUIPMENT CURB FLASHING

DETAIL NUMBER:

402

DRAWN BY:

RW

CONTRACTOR:

APPROVED BY:

MJ

INSTALLED BY:

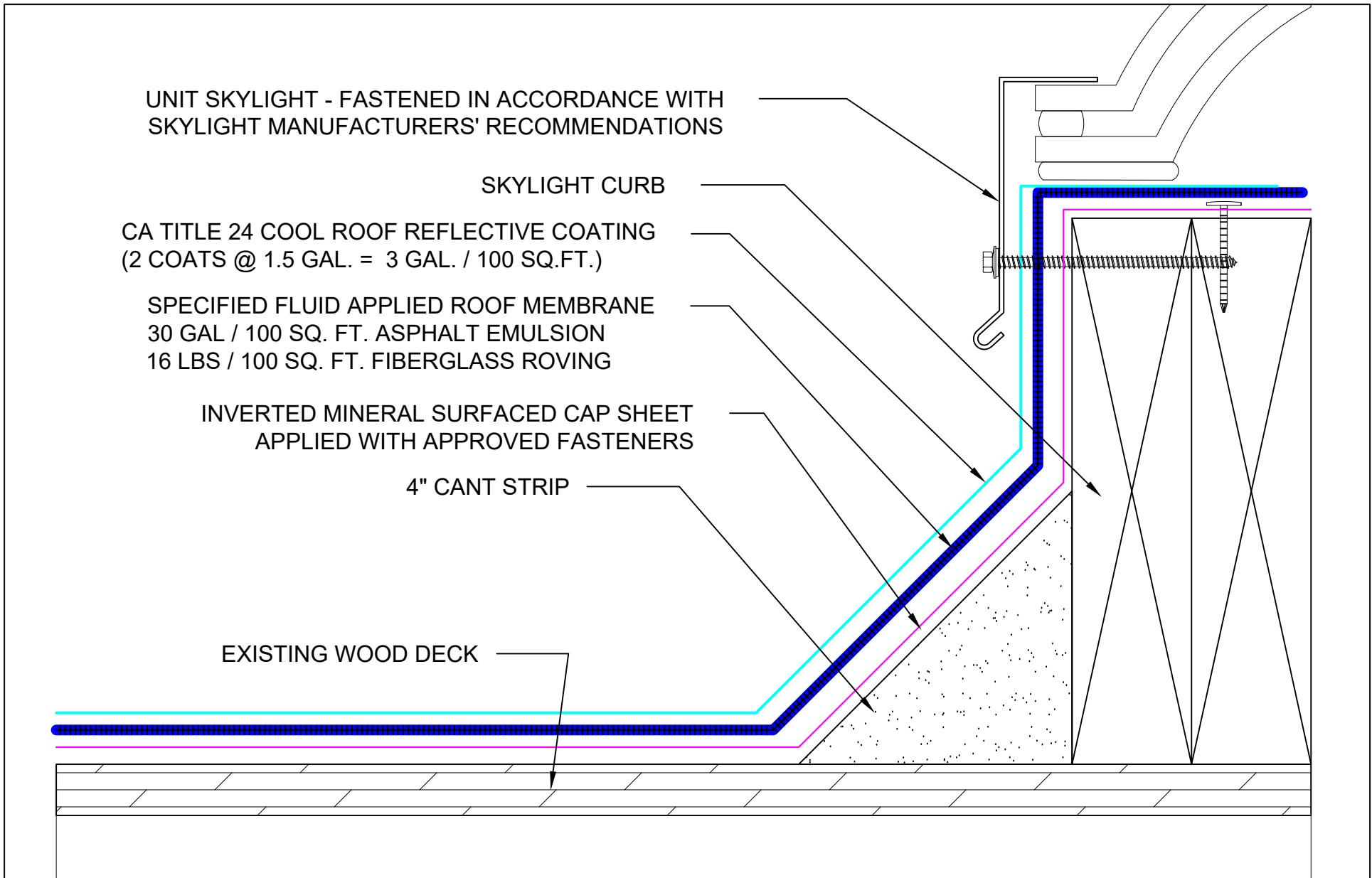
TBD

DATE:

3/26/25

SCALE:

6" = 1'-0"



Roof System:

NCN-1B-16-30-A



9757 7th Street, Suite 803
 Rancho Cucamonga, CA 91730-5297
 (888) 440-3224 | www.weatherweld.com

PROJECT:

DRAWING TITLE:

CURB MOUNTED SKYLIGHT FLASHING

DETAIL NUMBER:

403

DRAWN BY:

RW

CONTRACTOR:

APPROVED BY:

MJ

INSTALLED BY:

TBD

DATE:

3/26/25

SCALE:

6" = 1'-0"

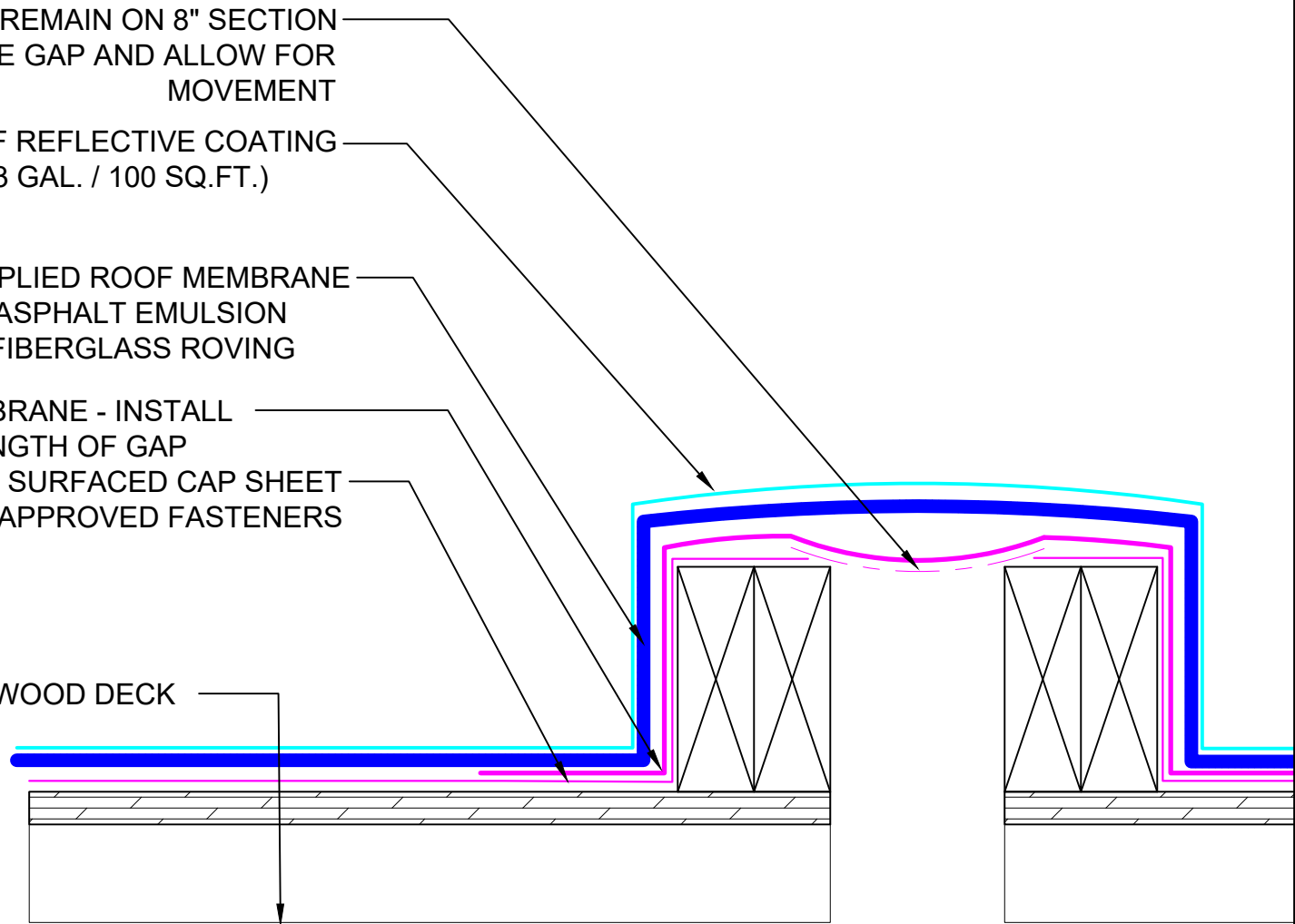
BACKING STRIP TO REMAIN ON 8" SECTION
TO STRADDLE GAP AND ALLOW FOR
MOVEMENT

CA TITLE 24 COOL ROOF REFLECTIVE COATING
(2 COATS @ 1.5 GAL. = 3 GAL. / 100 SQ.FT.)

SPECIFIED FLUID APPLIED ROOF MEMBRANE
30 GAL / 100 SQ. FT. ASPHALT EMULSION
16 LBS / 100 SQ. FT. FIBERGLASS ROVING

SELF ADHERING MEMBRANE - INSTALL
CONTINUOUS FOR LENGTH OF GAP
INVERTED MINERAL SURFACED CAP SHEET
APPLIED WITH APPROVED FASTENERS

EXISTING WOOD DECK



Roof System:

NCN-1B-16-30-A



A DIVISION OF LIQUIFORM TECHNOLOGIES, INC.

9757 7th Street, Suite 803
Rancho Cucamonga, CA 91730-5297
(888) 440-3224 | www.weatherweld.com

PROJECT:

DRAWING TITLE:

MODULAR CLASSROOM JOIN DETAIL

DETAIL NUMBER:

404

DRAWN BY:

RW

CONTRACTOR:

APPROVED BY:

MJ

INSTALLED BY:

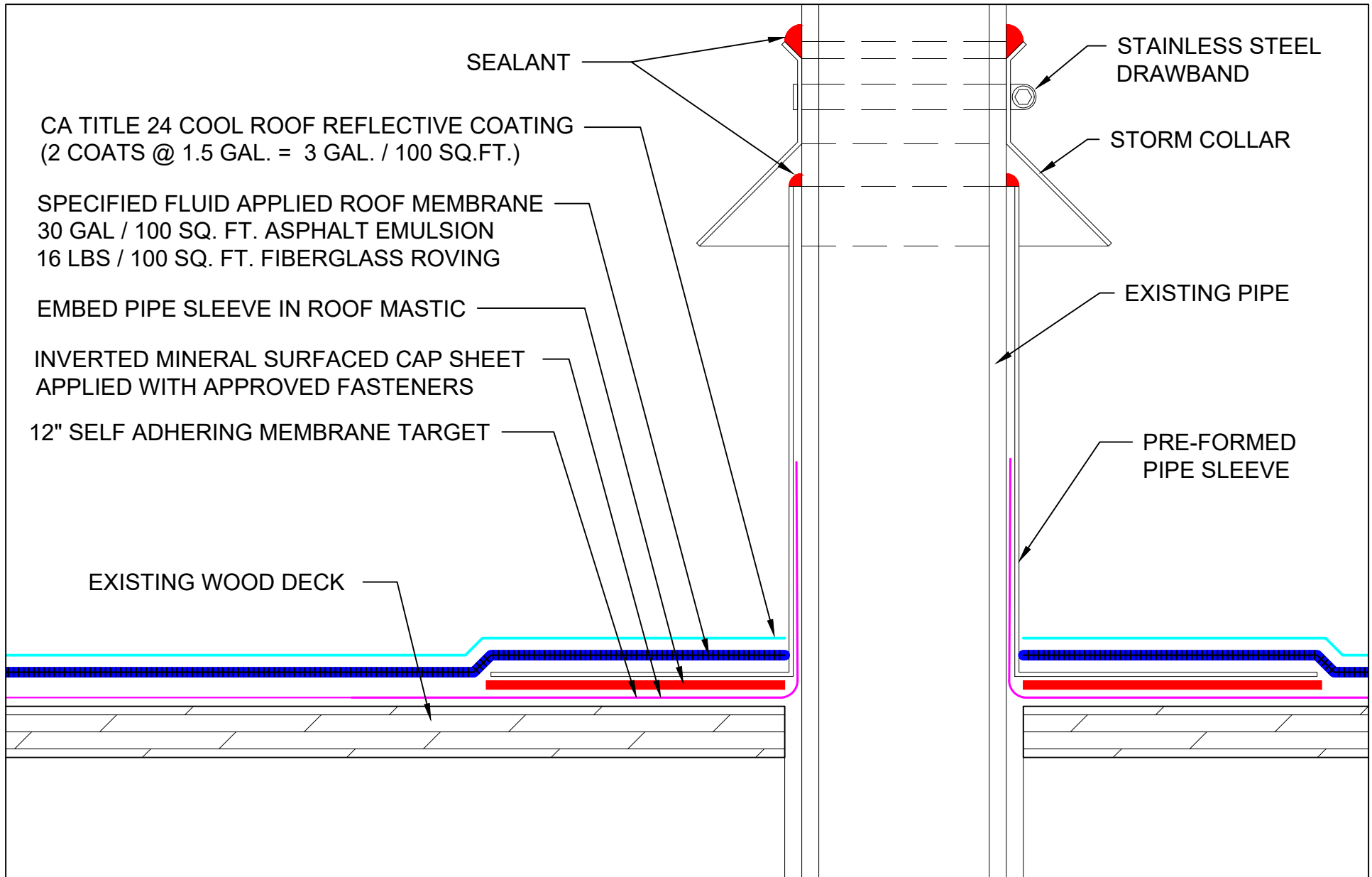
TBD

DATE:

3/26/25

SCALE:

3" = 1'-0"



Roof System:

NCN-1B-16-30-A



9757 7th Street, Suite 803
 Rancho Cucamonga, CA 91730-5297
 (888) 440-3224 | www.weatherweld.com

PROJECT:

DRAWING TITLE: **PIPE PENETRATION FLASHING**

DETAIL NUMBER: **501**

DRAWN BY: RW	CONTRACTOR:		
APPROVED BY: MJ	INSTALLED BY: TBD	DATE: 3/26/25	SCALE: 6" = 1'-0"

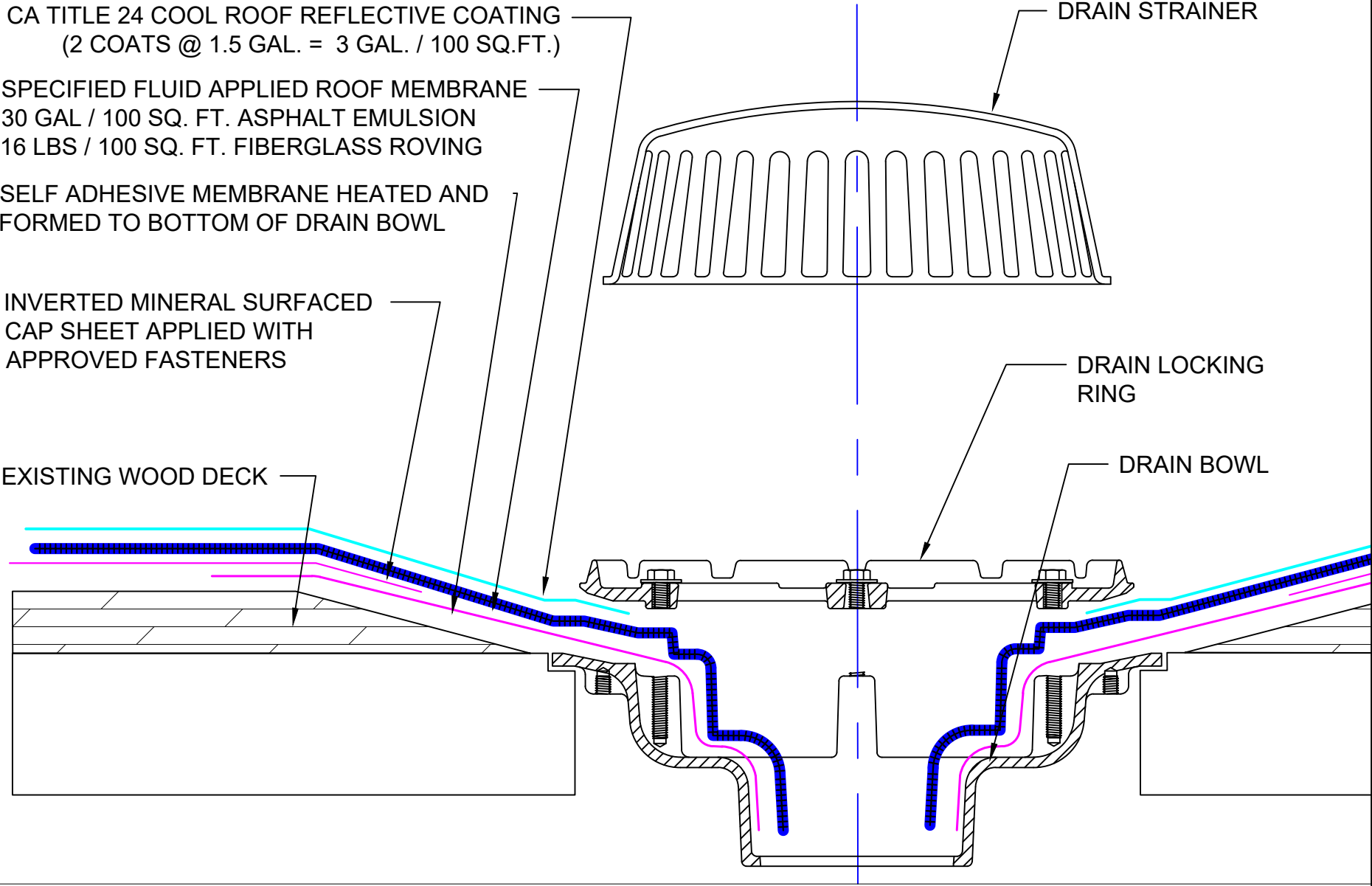
CA TITLE 24 COOL ROOF REFLECTIVE COATING
(2 COATS @ 1.5 GAL. = 3 GAL. / 100 SQ.FT.)

SPECIFIED FLUID APPLIED ROOF MEMBRANE
30 GAL / 100 SQ. FT. ASPHALT EMULSION
16 LBS / 100 SQ. FT. FIBERGLASS ROVING

SELF ADHESIVE MEMBRANE HEATED AND
FORMED TO BOTTOM OF DRAIN BOWL

INVERTED MINERAL SURFACED
CAP SHEET APPLIED WITH
APPROVED FASTENERS


EXISTING WOOD DECK

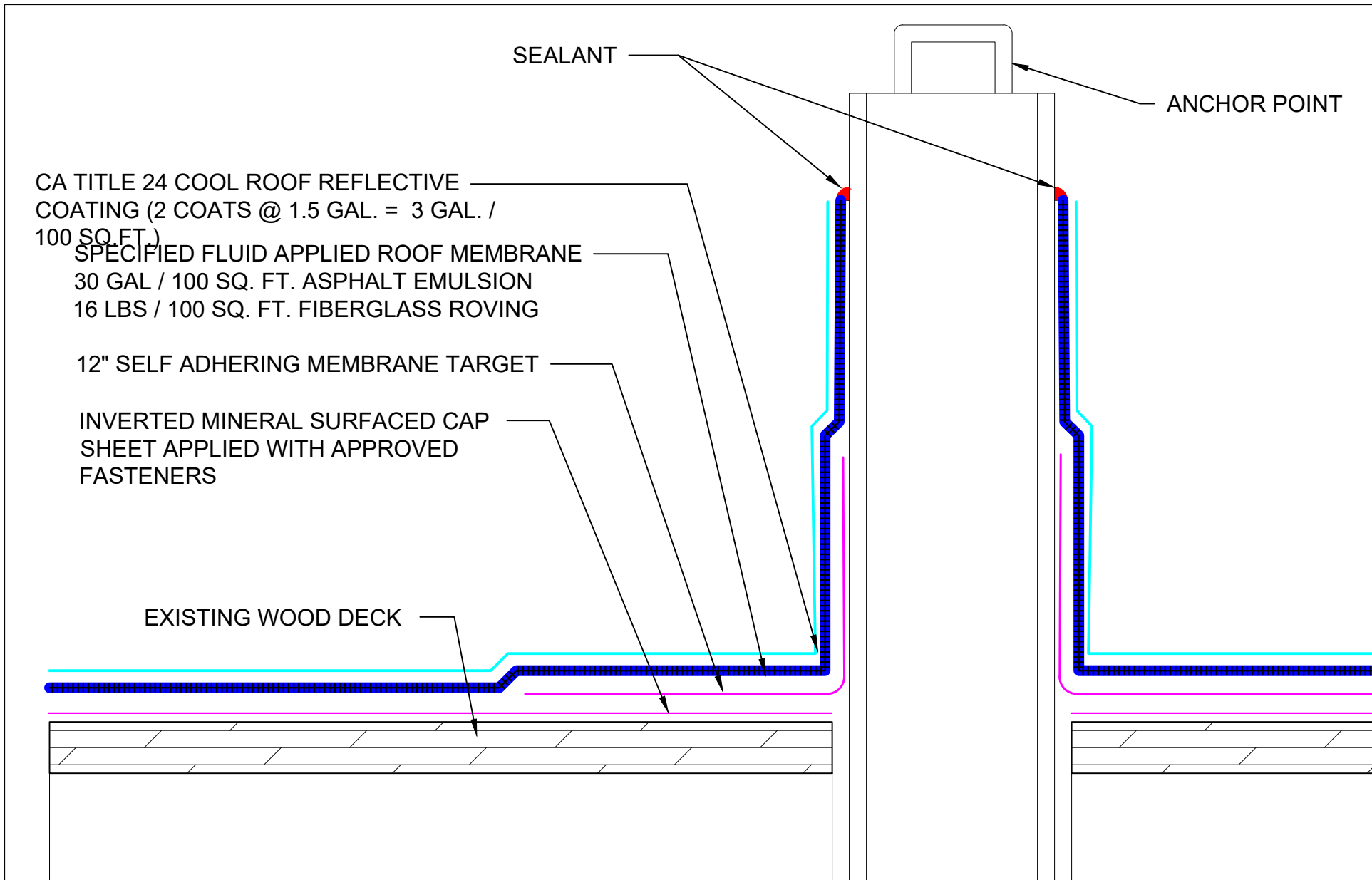


DRAIN STRAINER

DRAIN LOCKING RING

DRAIN BOWL

Roof System:	 <p>9757 7th Street, Suite 803 Rancho Cucamonga, CA 91730-5297 (888) 440-3224 www.weatherweld.com</p>	PROJECT:				
<p>NCN-1B-16-30-A</p>		DRAWING TITLE: <p>DRAIN DETAIL</p>	DETAIL NUMBER: <p>502</p>	DRAWN BY: <p>RW</p>	CONTRACTOR:	
			APPROVED BY: <p>MJ</p>	INSTALLED BY: <p>TBD</p>	DATE: <p>3/26/25</p>	SCALE: <p>6" = 1'-0"</p>



Roof System:

NCN-1B-16-30-A

WEATHERWELD
 ROOFING MADE SIMPLE
 A DIVISION OF LIQUIFORM TECHNOLOGIES, INC.

9757 7th Street, Suite 803
 Rancho Cucamonga, CA 91730-5297
 (888) 440-3224 | www.weatherweld.com

DRAWING TITLE: **ROOFTOP SAFETY ANCHOR**

DETAIL NUMBER: **504**

PROJECT:

DRAWN BY: **RW**

CONTRACTOR:

APPROVED BY: **MJ**

INSTALLED BY: **TBD**

DATE: **3/26/25**

SCALE: **6" = 1'-0"**