

System Overview

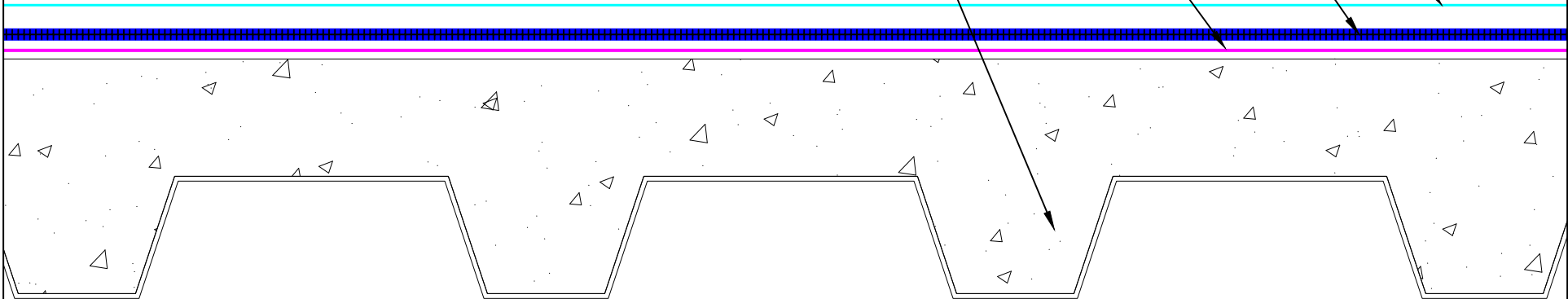
Deck:	Lightweight Concrete Deck (LWIC)
Base Sheet:	G2 BASE SHEET
Insulation / Cover:	-
Asphalt Emulsion:	30 Gal
Fiberglass Roving:	16 Lbs
Coating:	CA Title 24 Cool Roof Reflective Coating (3 Gal. / 100 Sq.Ft.)

CA TITLE 24 COOL ROOF REFLECTIVE COATING (3 GAL. / 100 SQ.FT.)

NCNN-1B-16-30-A WEATHERWELD APPLICATION
 30 GAL / 100 SQ. FT. ASPHALT EMULSION
 16 LBS / 100 SQ. FT. FIBERGLASS ROVING

G2 BASE SHEET

EXISTING LWIC DECK



SYSTEM:
NCN-1B-16-30-A
 Composite Membrane Over
 Nailable Deck (Wood / LWIC /
 Poured Gypsum)

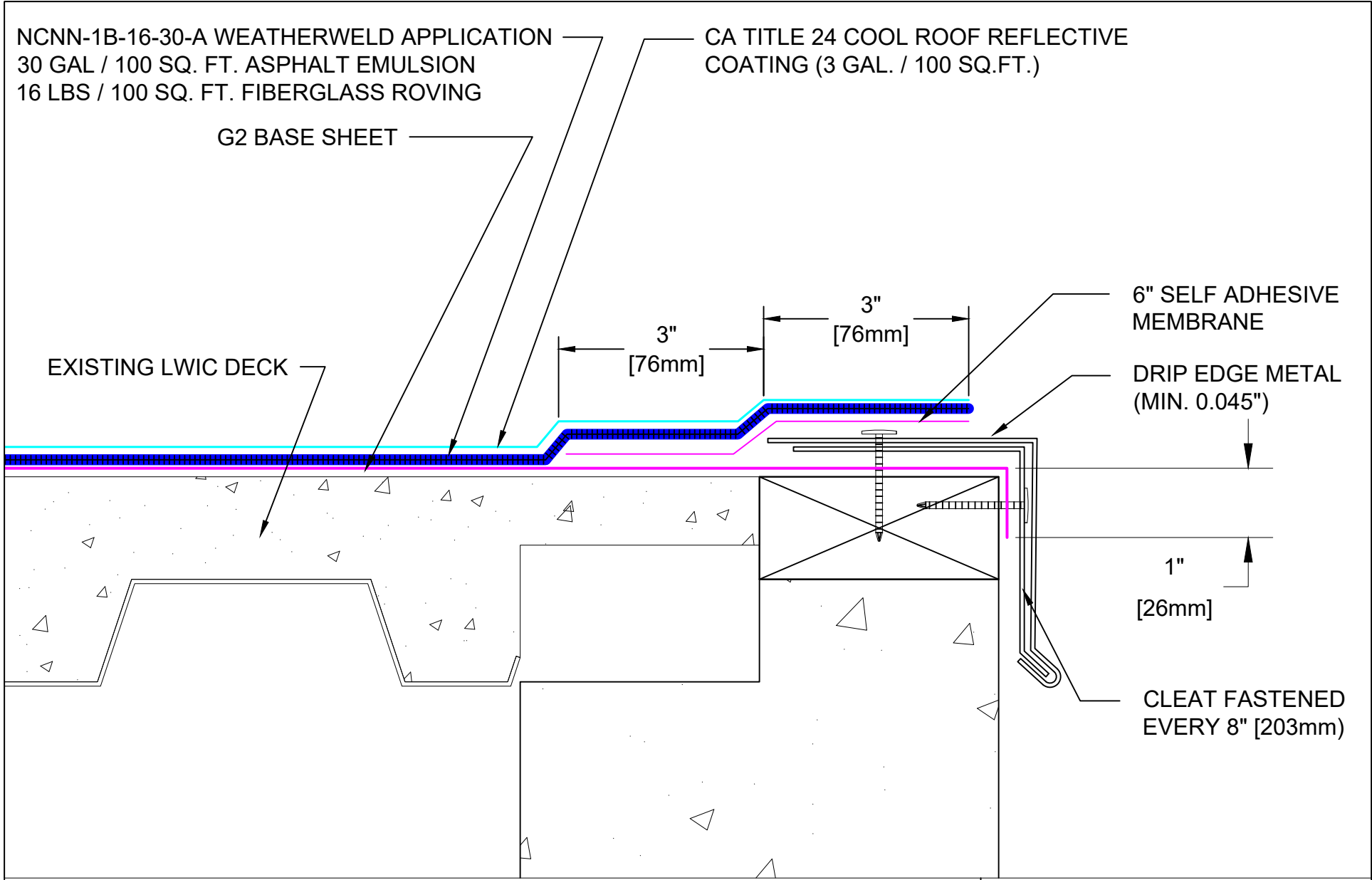
WEATHERWELD
A DIVISION OF LIQUIFORM TECHNOLOGIES, INC.


9757 7th Street, Suite 803
 Rancho Cucamonga, CA 91730-5297
 (888) 440-3224 | www.weatherweld.com

DRAWING TITLE: **SYSTEM OVERVIEW**

DETAIL NUMBER: **101**

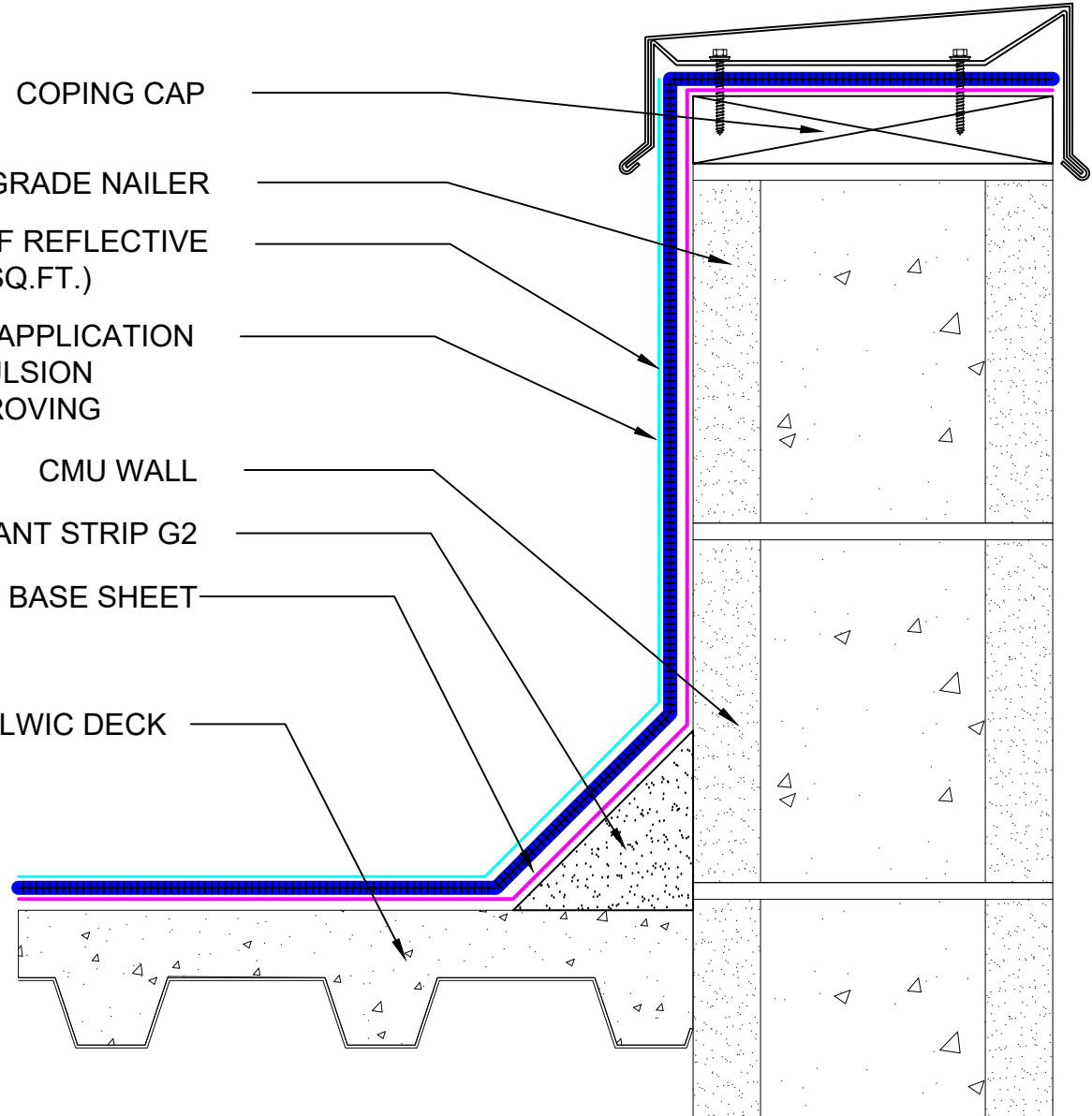
PREPARED FOR:			
DRAWN BY: R. Weygant	PROJECT:		
APPROVED BY: M. Jones	INSTALLED BY:	DATE: 1/24/24	SCALE: NTS



SYSTEM: NCN-1B-16-30-A Composite Membrane Over Nailable Deck (Wood / LWIC / Poured Gypsum)	 A DIVISION OF LIQUIFORM TECHNOLOGIES, INC.	9757 7 th Street, Suite 803 Rancho Cucamonga, CA 91730-5297 (888) 440-3224 www.weatherweld.com		PREPARED FOR:	
		DRAWING TITLE: EDGE FLASHING	DETAIL NUMBER: 201	DRAWN BY: R. Weygant	PROJECT:
		APPROVED BY: M. Jones	INSTALLED BY: TBD	DATE: 1/24/24	SCALE: 6" = 1'-0"

COPING CAP
 EXTERIOR GRADE NAILER
 CA TITLE 24 COOL ROOF REFLECTIVE
 COATING (3 GAL. / 100 SQ.FT.)
 NCNN-1B-16-30-A WEATHERWELD APPLICATION
 30 GAL / 100 SQ. FT. ASPHALT EMULSION
 16 LBS / 100 SQ. FT. FIBERGLASS ROVING

CMU WALL
 4" CANT STRIP G2
 BASE SHEET
 EXISTING LWIC DECK



SYSTEM:

NCN-1B-16-30-A

Composite Membrane Over
 Nailable Deck (Wood / LWIC /
 Poured Gypsum)



9757 7th Street, Suite 803
 Rancho Cucamonga, CA 91730-5297
 (888) 440-3224 | www.weatherweld.com

PREPARED FOR:

DRAWING TITLE:

COPING CAP FLASHING AT CMU WALL

DETAIL NUMBER:

301

DRAWN BY:

R. Weygant

PROJECT:

APPROVED BY:
M. Jones

INSTALLED BY:
TBD

DATE:
1/24/24

SCALE:
3" = 1'-0"

SURFACE MOUNTED TWO PIECE REGLET

CMU WALL

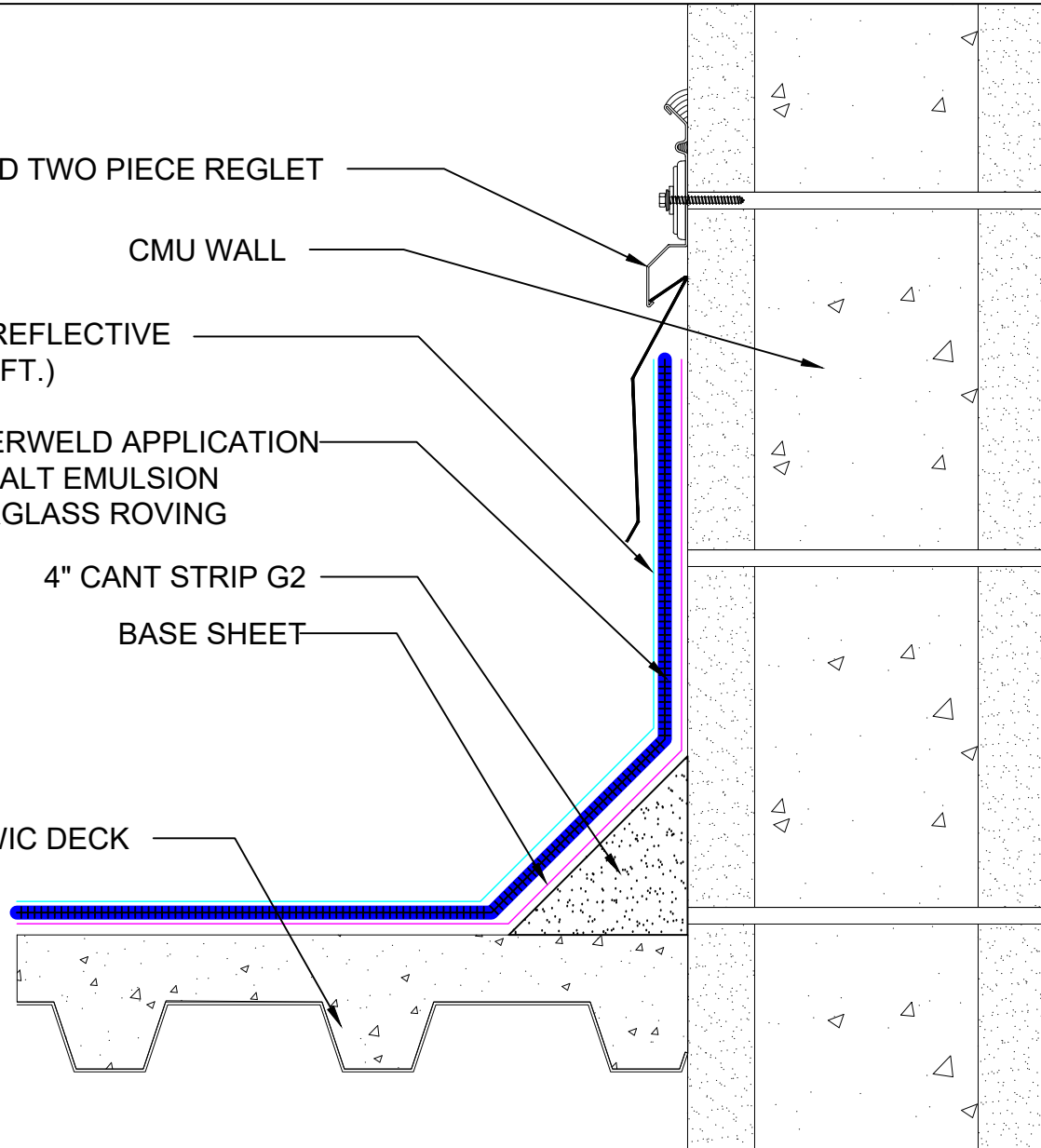
CA TITLE 24 COOL ROOF REFLECTIVE COATING (3 GAL. / 100 SQ.FT.)

NCNN-1B-16-30-A WEATHERWELD APPLICATION
30 GAL / 100 SQ. FT. ASPHALT EMULSION
16 LBS / 100 SQ. FT. FIBERGLASS ROVING

4" CANT STRIP G2

BASE SHEET

EXISTING LWIC DECK



SYSTEM:

NCN-1B-16-30-A

Composite Membrane Over
Nailable Deck (Wood / LWIC /
Poured Gypsum)

WEATHERWELD

A DIVISION OF LIQUIFORM TECHNOLOGIES, INC.

9757 7th Street, Suite 803
Rancho Cucamonga, CA 91730-5297
(888) 440-3224 | www.weatherweld.com

DRAWING TITLE:

SURFACE MOUNTED REGLET AT CMU WALL

DETAIL NUMBER:

302

PREPARED FOR:

DRAWN BY:

R. Weygant

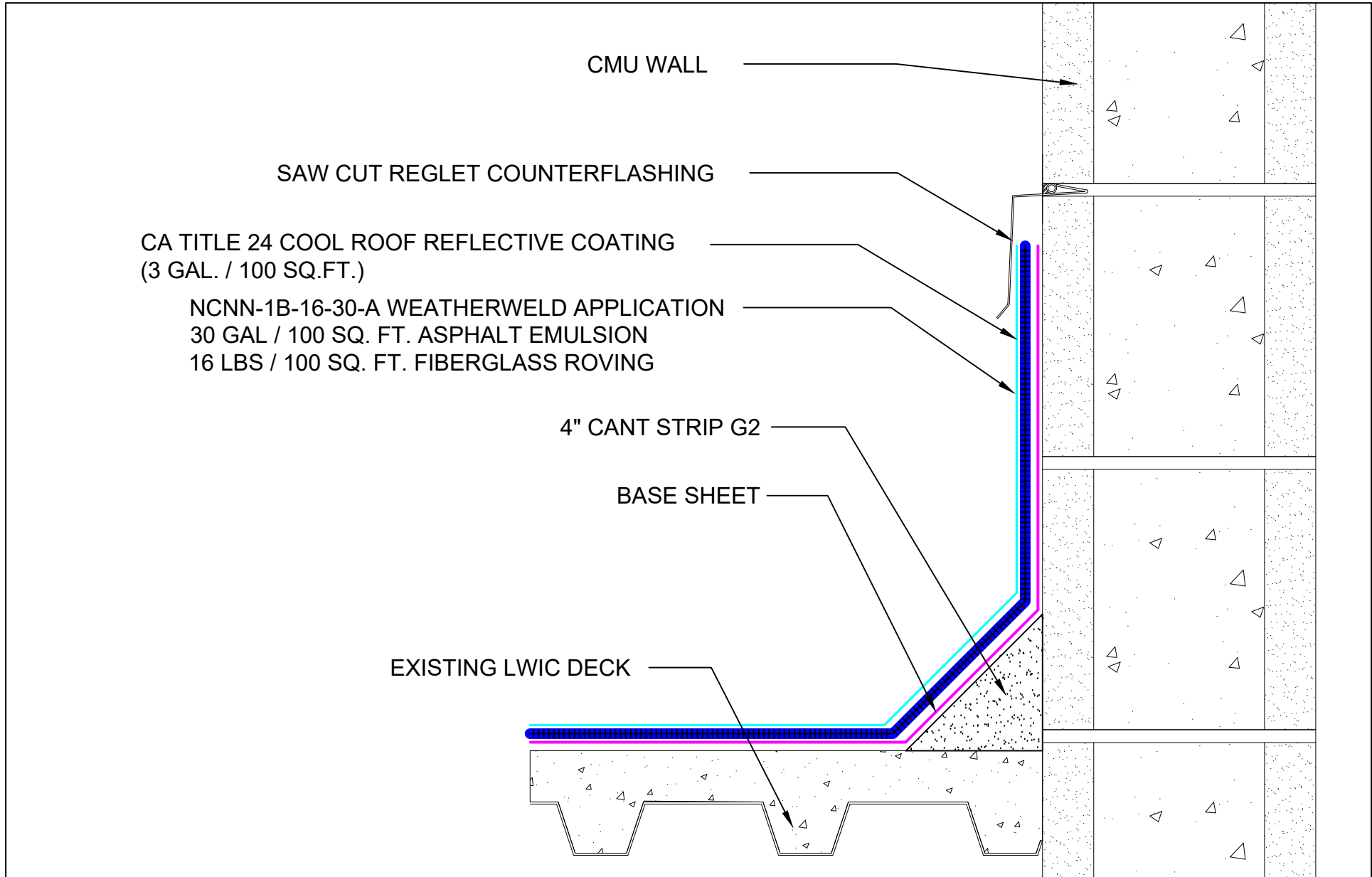
PROJECT:


APPROVED BY:
M. Jones

INSTALLED BY:
TBD

DATE:
1/24/24

SCALE:
3" = 1'-0"



SYSTEM: NCN-1B-16-30-A	 A DIVISION OF LIQUIFORM TECHNOLOGIES, INC. 9757 7 th Street, Suite 803 Rancho Cucamonga, CA 91730-5297 (888) 440-3224 www.weatherweld.com	PREPARED FOR:						
Composite Membrane Over Nailable Deck (Wood / LWIC / Poured Gypsum)	DRAWING TITLE: SAW CUT REGLET AT CMU WALL	DETAIL NUMBER: 303	DRAWN BY: R. Weygant	PROJECT:	APPROVED BY: M. Jones	INSTALLED BY: TBD	DATE: 1/24/24	SCALE: 3" = 1'-0"

CA TITLE 24 COOL ROOF REFLECTIVE COATING (3 GAL. / 100 SQ.FT.)

NCNN-1B-16-30-A WEATHERWELD APPLICATION
30 GAL / 100 SQ. FT. ASPHALT EMULSION
16 LBS / 100 SQ. FT. FIBERGLASS ROVING

EXISTING COUNTERFLASHING

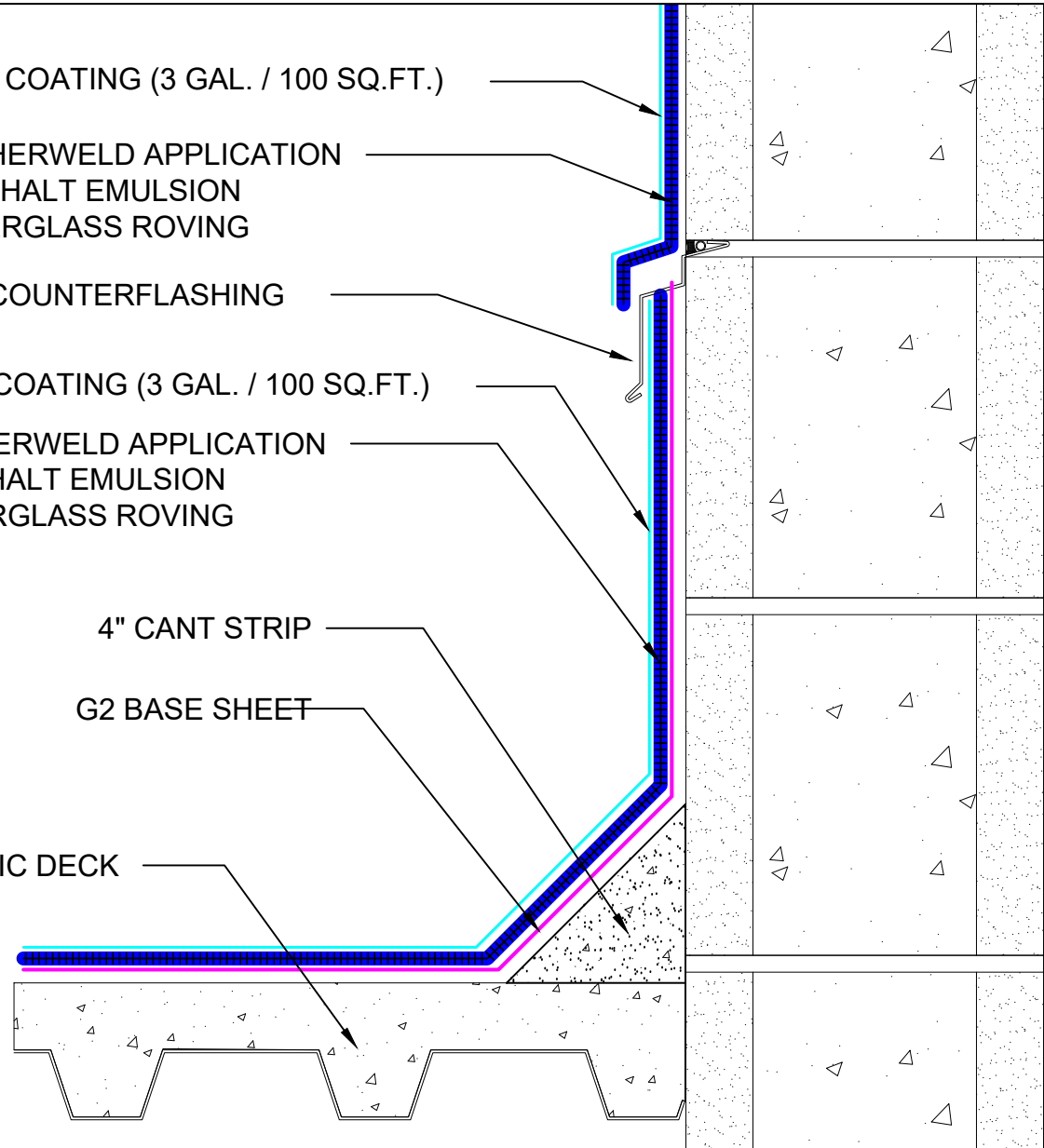
CA TITLE 24 COOL ROOF REFLECTIVE COATING (3 GAL. / 100 SQ.FT.)

NCNN-1B-16-30-A WEATHERWELD APPLICATION
30 GAL / 100 SQ. FT. ASPHALT EMULSION
16 LBS / 100 SQ. FT. FIBERGLASS ROVING

4" CANT STRIP

G2 BASE SHEET

EXISTING LWIC DECK



SYSTEM:

NCN-1B-16-30-A

Composite Membrane Over
Nailable Deck (Wood / LWIC /
Poured Gypsum)



9757 7th Street, Suite 803
Rancho Cucamonga, CA 91730-5297
(888) 440-3224 | www.weatherweld.com

PREPARED FOR:

DRAWING TITLE:

**CMU WALL WITH EXISTING REGLET
COUNTERFLASHING**

DETAIL NUMBER:

304

DRAWN BY:

R. Weygant

PROJECT:

APPROVED BY:
M. Jones

INSTALLED BY:
TBD

DATE:
1/24/24

SCALE:
3" = 1'-0"

CA TITLE 24 COOL ROOF REFLECTIVE COATING (3 GAL. / 100 SQ.FT.)

NCNN-1B-16-30-A WEATHERWELD APPLICATION
 30 GAL / 100 SQ. FT. ASPHALT EMULSION
 16 LBS / 100 SQ. FT. FIBERGLASS ROVING

EXISTING COUNTERFLASHING

CA TITLE 24 COOL ROOF REFLECTIVE COATING (3 GAL. / 100 SQ.FT.)

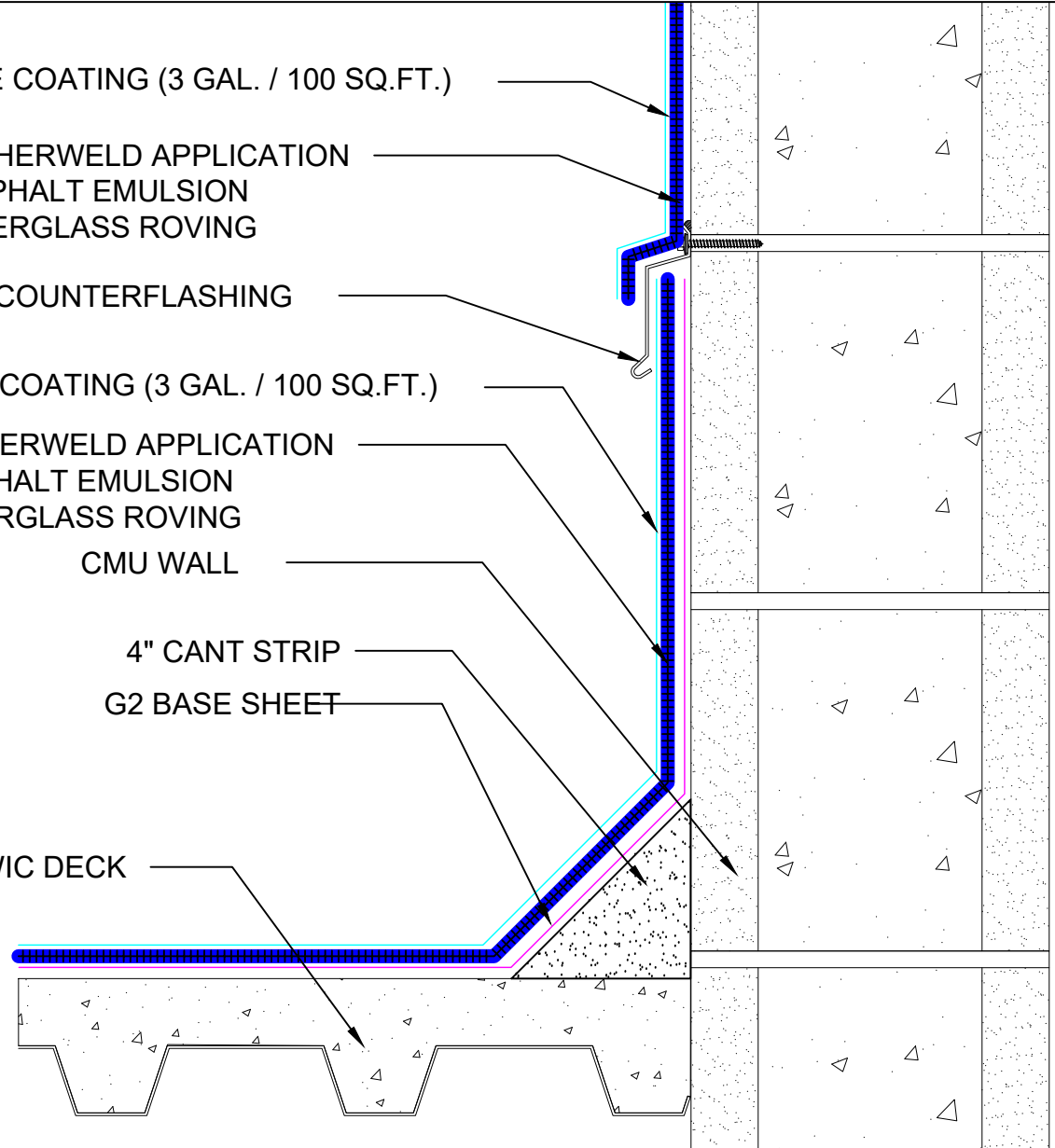
NCNN-1B-16-30-A WEATHERWELD APPLICATION
 30 GAL / 100 SQ. FT. ASPHALT EMULSION
 16 LBS / 100 SQ. FT. FIBERGLASS ROVING

CMU WALL

4" CANT STRIP

G2 BASE SHEET

EXISTING LWIC DECK



SYSTEM:

NCN-1B-16-30-A

Composite Membrane Over
 Nailable Deck (Wood / LWIC /
 Poured Gypsum)



9757 7th Street, Suite 803
 Rancho Cucamonga, CA 91730-5297
 (888) 440-3224 | www.weatherweld.com

PREPARED FOR:

DRAWING TITLE:

**CMU WALL WITH EXISTING SURFACE
 MOUNTED COUNTERFLASHING**

DETAIL NUMBER:

305

DRAWN BY:

R. Weygant

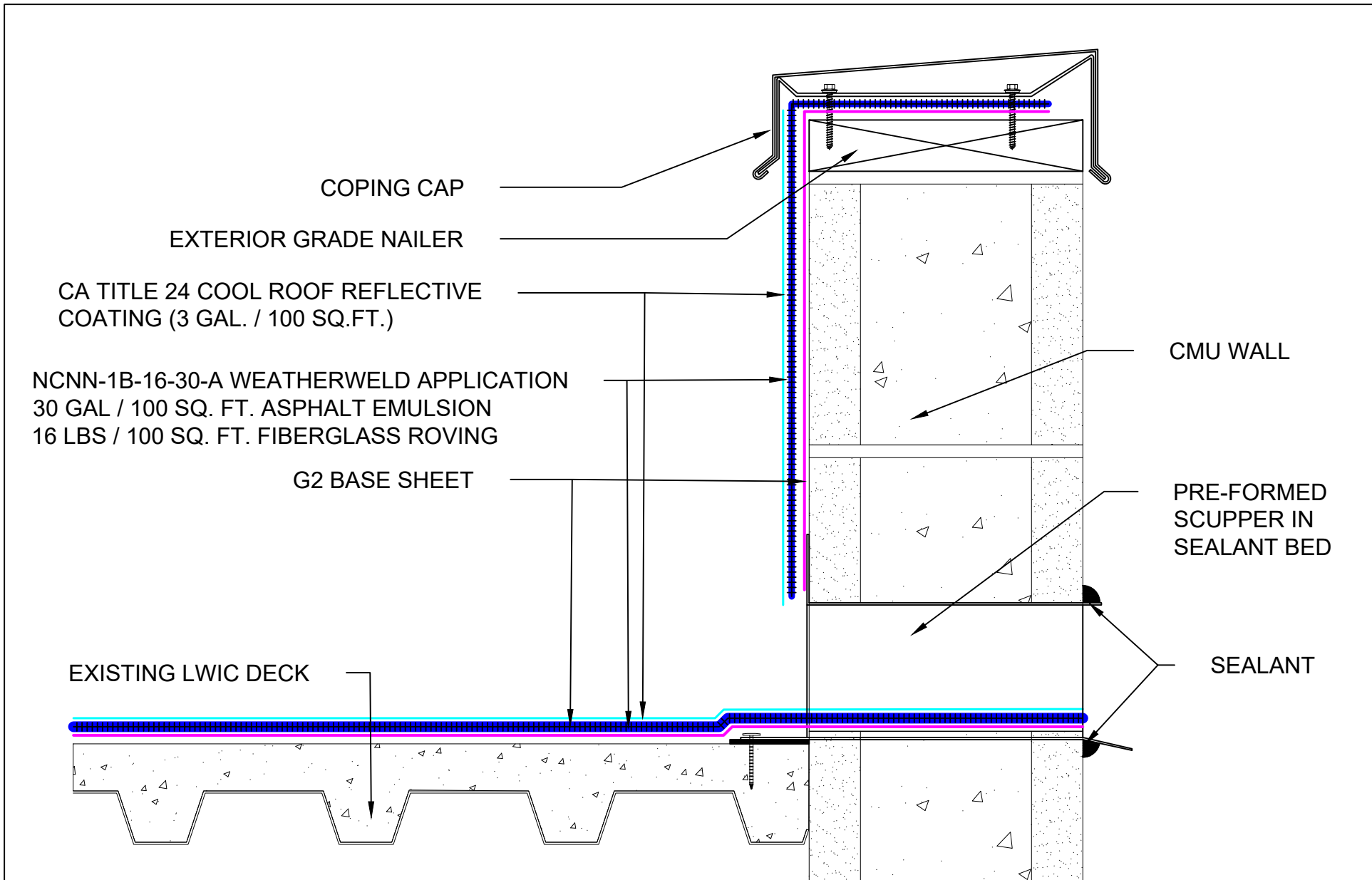
PROJECT:


APPROVED BY:
M. Jones

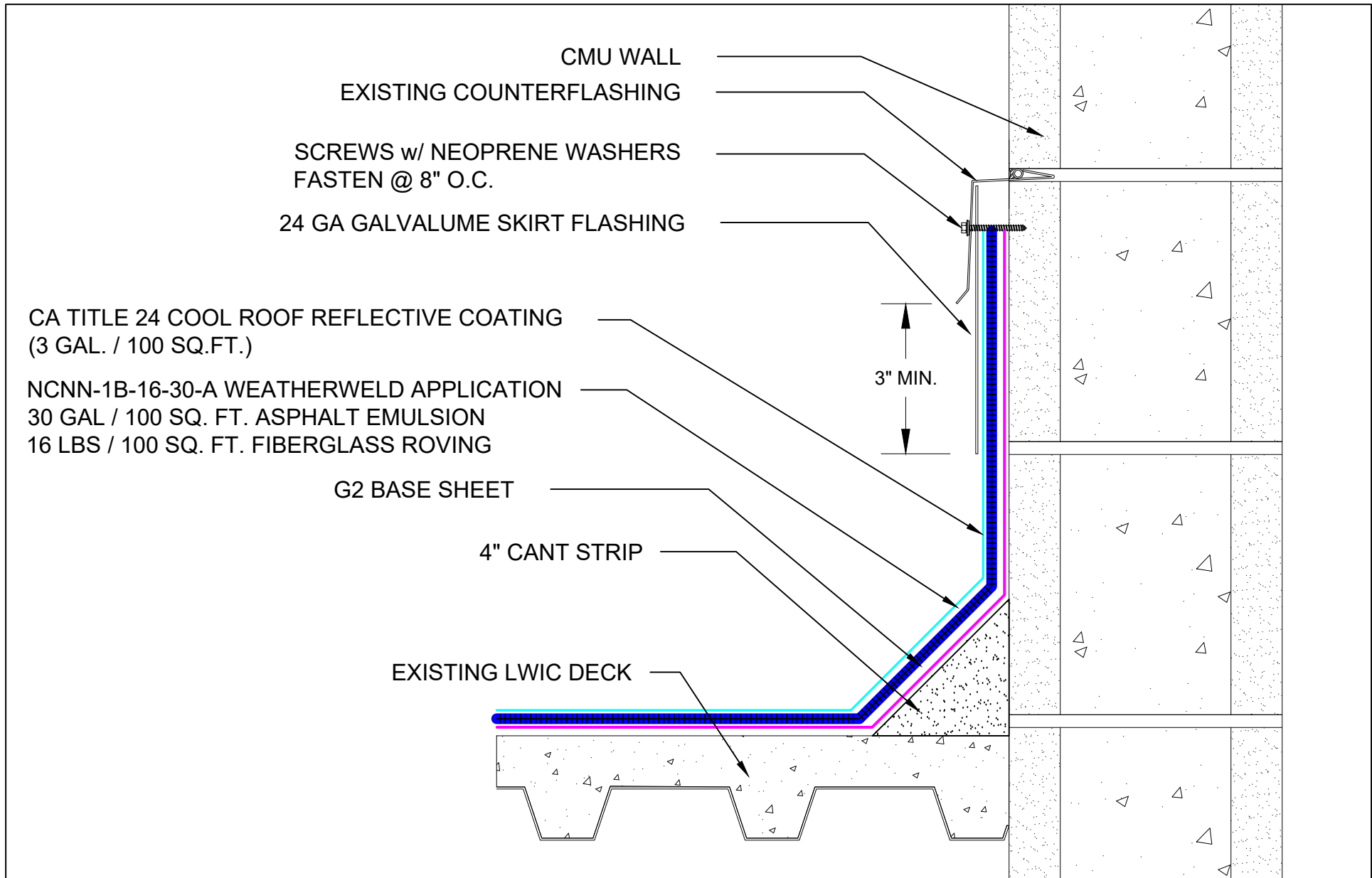
INSTALLED BY:
TBD


DATE:
1/24/24

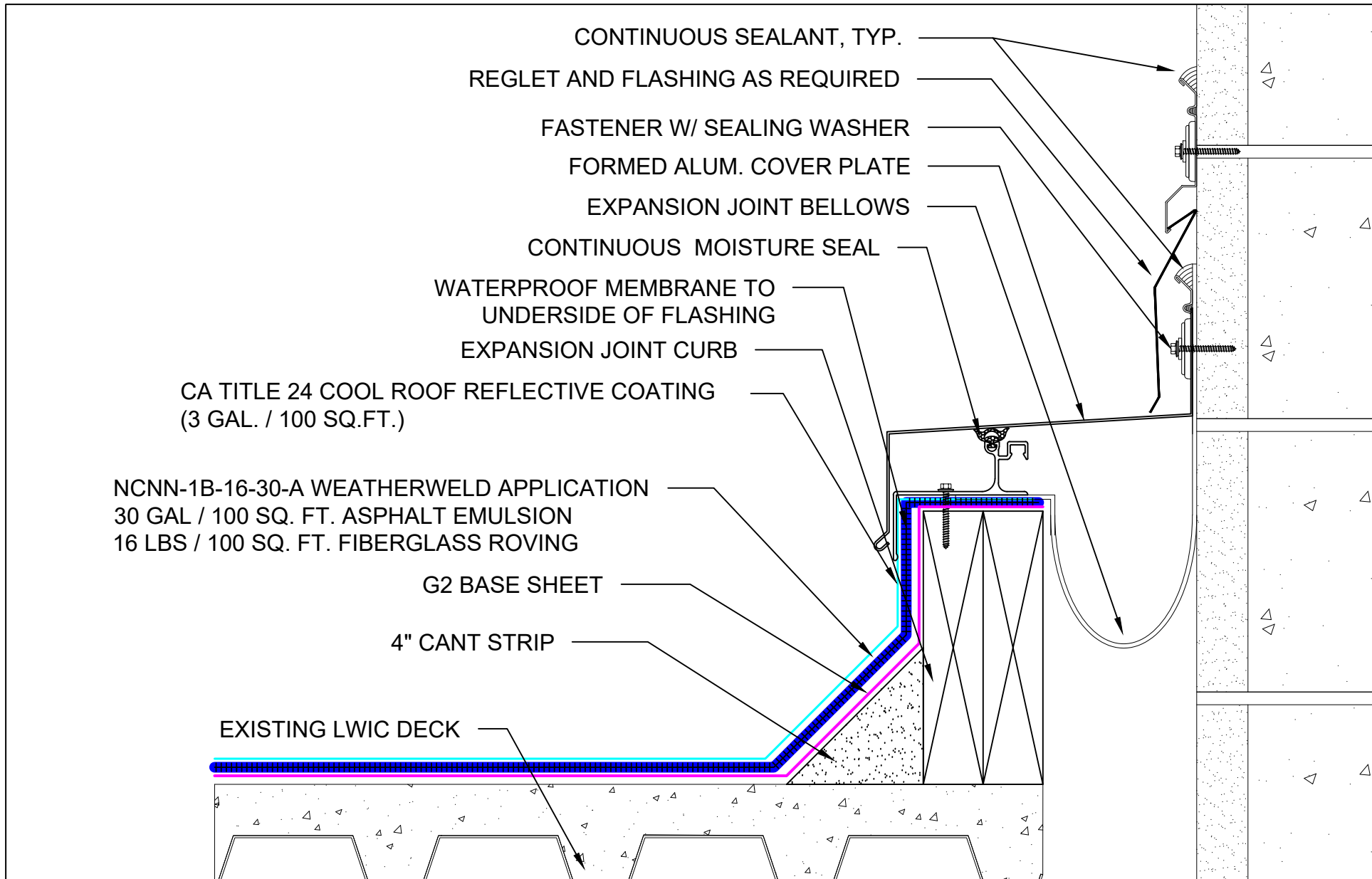
SCALE:
3" = 1'-0"




SYSTEM: NCN-1B-16-30-A	 A DIVISION OF LIQUIFORM TECHNOLOGIES, INC. 9757 7 th Street, Suite 803 Rancho Cucamonga, CA 91730-5297 (888) 440-3224 www.weatherweld.com	PREPARED FOR:				
Composite Membrane Over Nailable Deck (Wood / LWIC / Poured Gypsum)	DRAWING TITLE: THRU WALL SCUPPER FLASHING AT CMU WALL	DETAIL NUMBER: 306	DRAWN BY: R. Weygant	PROJECT:		
			APPROVED BY: M. Jones	INSTALLED BY: TBD	DATE: 1/24/24	SCALE: 3" = 1'-0"



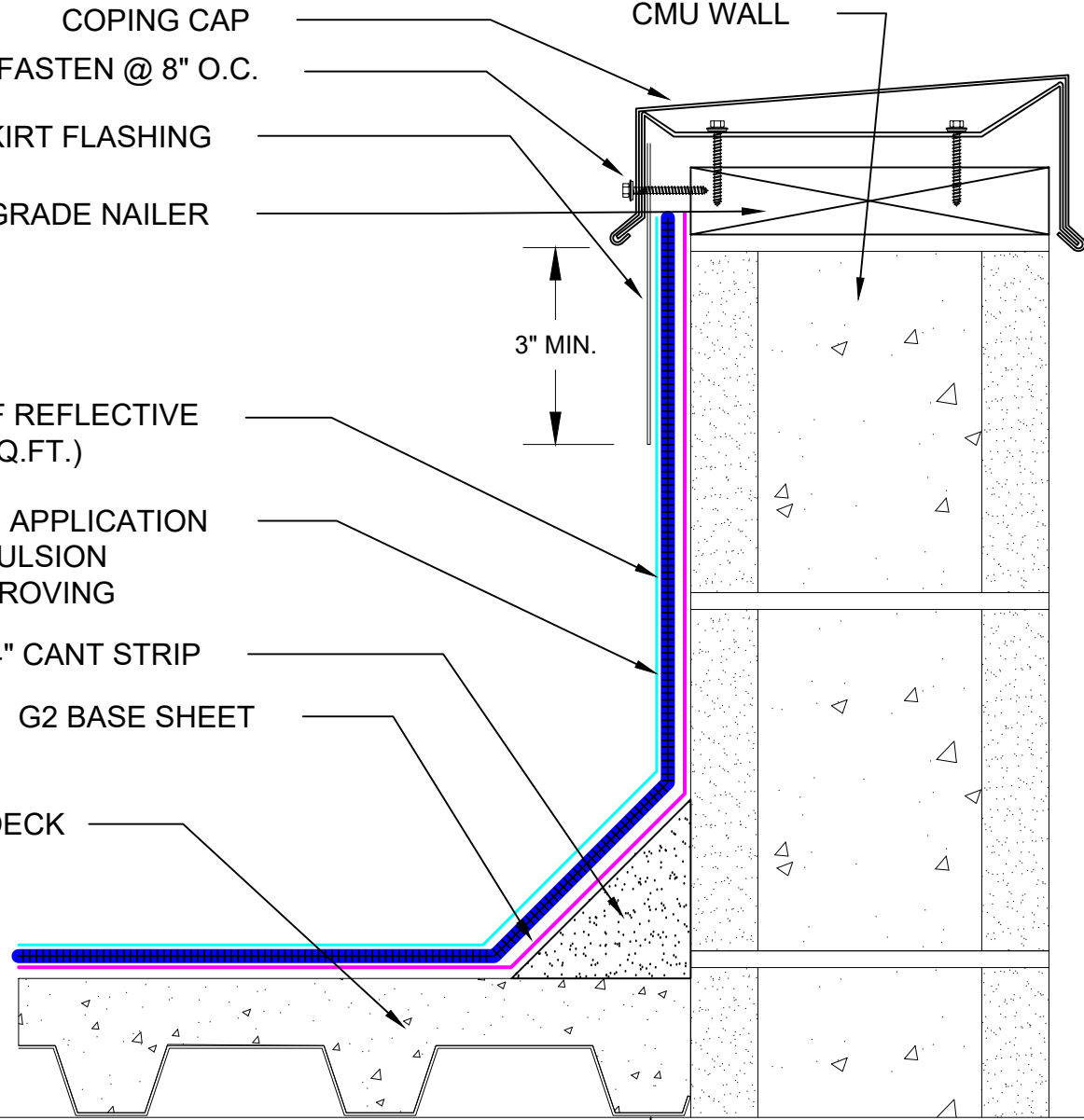
SYSTEM: NCN-1B-16-30-A	 A DIVISION OF LIQUIFORM TECHNOLOGIES, INC. 9757 7 th Street, Suite 803 Rancho Cucamonga, CA 91730-5297 (888) 440-3224 www.weatherweld.com	PREPARED FOR:						
Composite Membrane Over Nailable Deck (Wood / LWIC / Poured Gypsum)	DRAWING TITLE: SKIRTED COUNTERFLASHING AT CMU WALL	DETAIL NUMBER: 307	DRAWN BY: R. Weygant	PROJECT:	APPROVED BY: M. Jones	INSTALLED BY: TBD	DATE: 1/24/24	SCALE: 3" = 1'-0"



SYSTEM: NCN-1B-16-30-A	 A DIVISION OF LIQUIFORM TECHNOLOGIES, INC. 9757 7 th Street, Suite 803 Rancho Cucamonga, CA 91730-5297 (888) 440-3224 www.weatherweld.com	PREPARED FOR:						
Composite Membrane Over Nailable Deck (Wood / LWIC / Poured Gypsum)	DRAWING TITLE: EXPANSION JOINT AT CMU WALL	DETAIL NUMBER: 308	DRAWN BY: R. Weygant	PROJECT:	APPROVED BY: M. Jones	INSTALLED BY: TBD	DATE: 1/24/24	SCALE: 3" = 1'-0"

COPING CAP
 SCREWS w/ NEOPRENE WASHERS - FASTEN @ 8" O.C.
 24 GA GALVALUME SKIRT FLASHING
 EXTERIOR GRADE NAILER

CMU WALL



CA TITLE 24 COOL ROOF REFLECTIVE COATING (3 GAL. / 100 SQ.FT.)
 NCNN-1B-16-30-A WEATHERWELD APPLICATION
 30 GAL / 100 SQ. FT. ASPHALT EMULSION
 16 LBS / 100 SQ. FT. FIBERGLASS ROVING

4" CANT STRIP
 G2 BASE SHEET

EXISTING LWIC DECK

3" MIN.

SYSTEM:
NCN-1B-16-30-A
 Composite Membrane Over
 Nailable Deck (Wood / LWIC /
 Poured Gypsum)



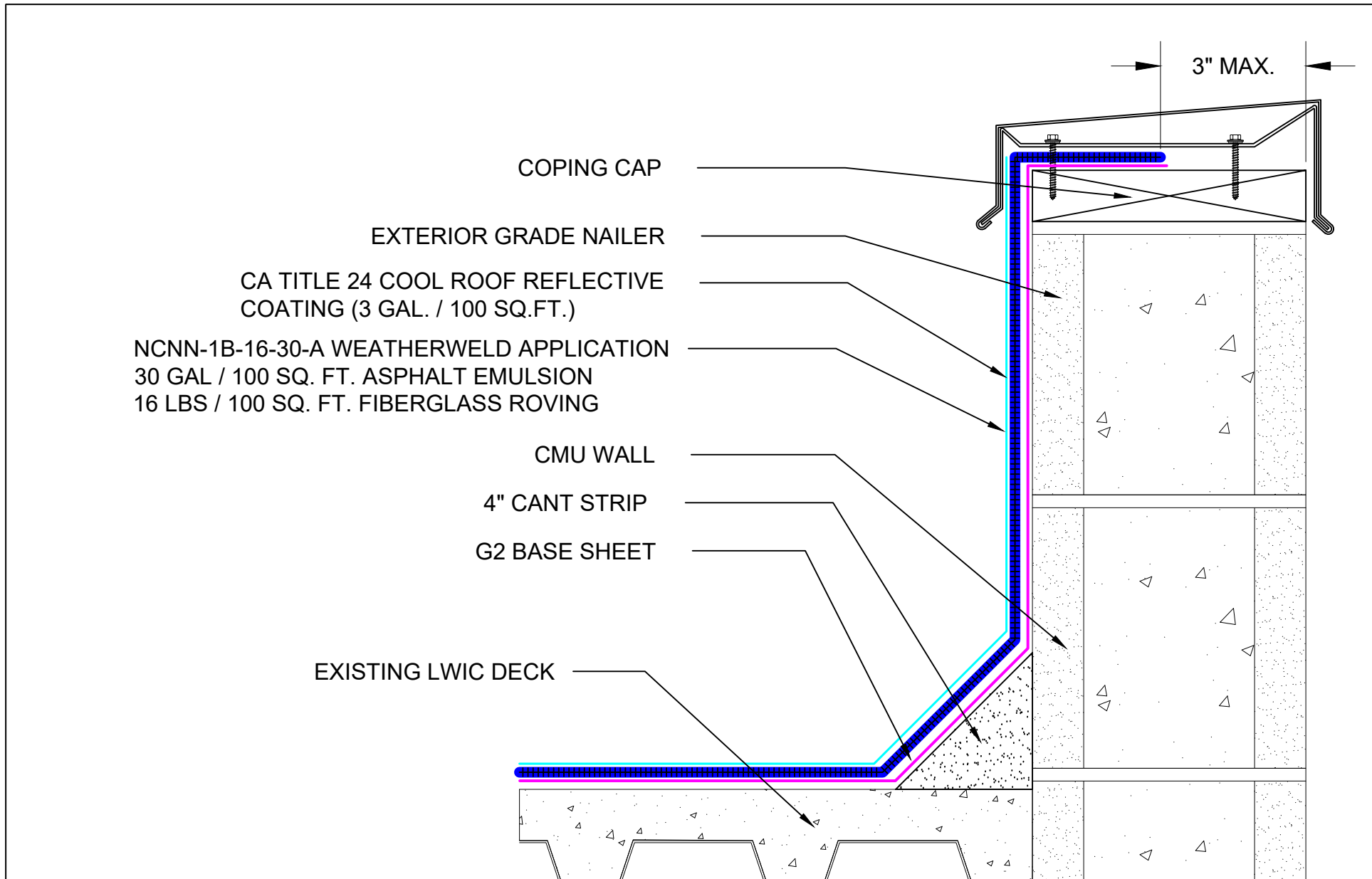
9757 7th Street, Suite 803
 Rancho Cucamonga, CA 91730-5297
 (888) 440-3224 | www.weatherweld.com

PREPARED FOR:

DRAWING TITLE:
SKIRTED COPING DETAIL AT CMU WALL

DETAIL NUMBER:
309

DRAWN BY: R. Weygant	PROJECT:
APPROVED BY: M. Jones	INSTALLED BY: TBD
DATE: 1/24/24	SCALE: 3" = 1'-0"



COPING CAP

EXTERIOR GRADE NAILER

CA TITLE 24 COOL ROOF REFLECTIVE COATING (3 GAL. / 100 SQ.FT.)

NCNN-1B-16-30-A WEATHERWELD APPLICATION
 30 GAL / 100 SQ. FT. ASPHALT EMULSION
 16 LBS / 100 SQ. FT. FIBERGLASS ROVING


CMU WALL

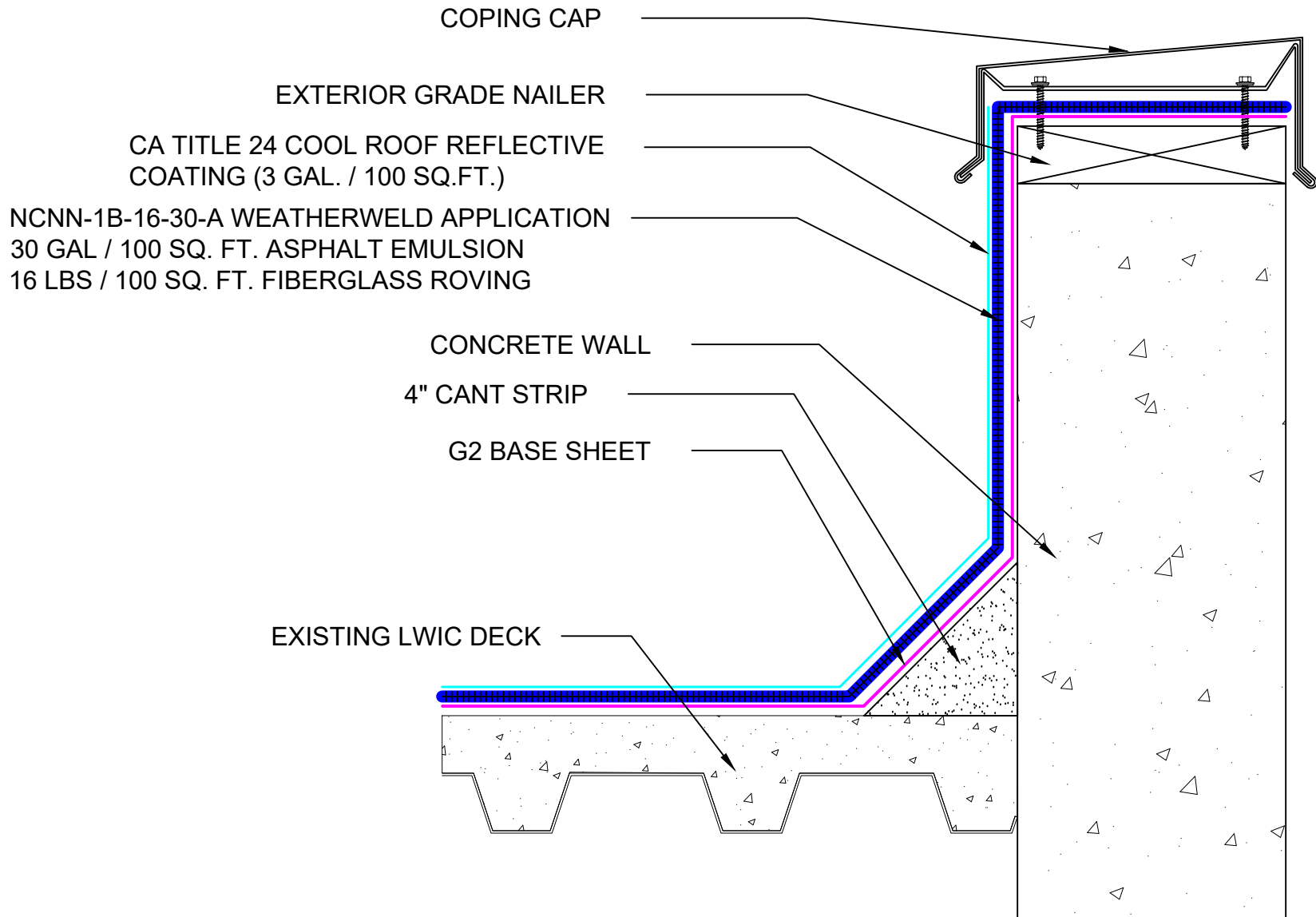
4" CANT STRIP

G2 BASE SHEET

EXISTING LWIC DECK

3" MAX.

SYSTEM: NCN-1B-16-30-A Composite Membrane Over Nailable Deck (Wood / LWIC / Poured Gypsum)	 <small>A DIVISION OF LIQUIFORM TECHNOLOGIES, INC.</small>	9757 7 th Street, Suite 803 Rancho Cucamonga, CA 91730-5297 (888) 440-3224 www.weatherweld.com		PREPARED FOR:	
		DRAWING TITLE: COPING DETAIL AT CMU WALL (ALT)	DETAIL NUMBER: 310	DRAWN BY: R. Weygant	PROJECT:
		APPROVED BY: M. Jones	INSTALLED BY: TBD	DATE: 1/24/24	SCALE: 3" = 1'-0"



SYSTEM:

NCN-1B-16-30-A

Composite Membrane Over
Nailable Deck (Wood / LWIC /
Poured Gypsum)

WEATHERWELD

A DIVISION OF LIQUIFORM TECHNOLOGIES, INC.

9757 7th Street, Suite 803
Rancho Cucamonga, CA 91730-5297
(888) 440-3224 | www.weatherweld.com

PREPARED FOR:

DRAWING TITLE:
COPING CAP FLASHING AT CONCRETE WALL

DETAIL NUMBER:
351

DRAWN BY:
R. Weygant

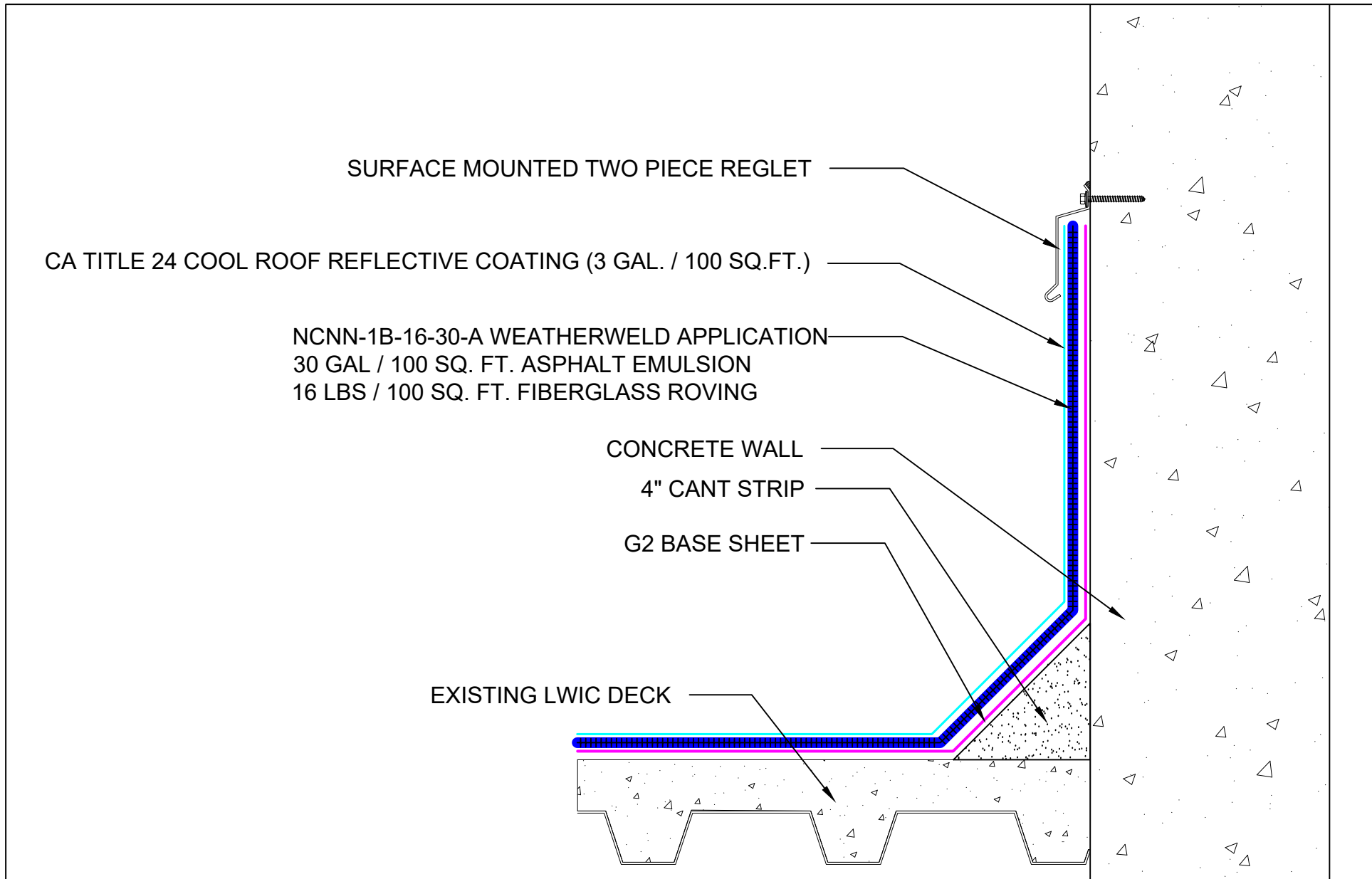
PROJECT:


APPROVED BY:
M. Jones

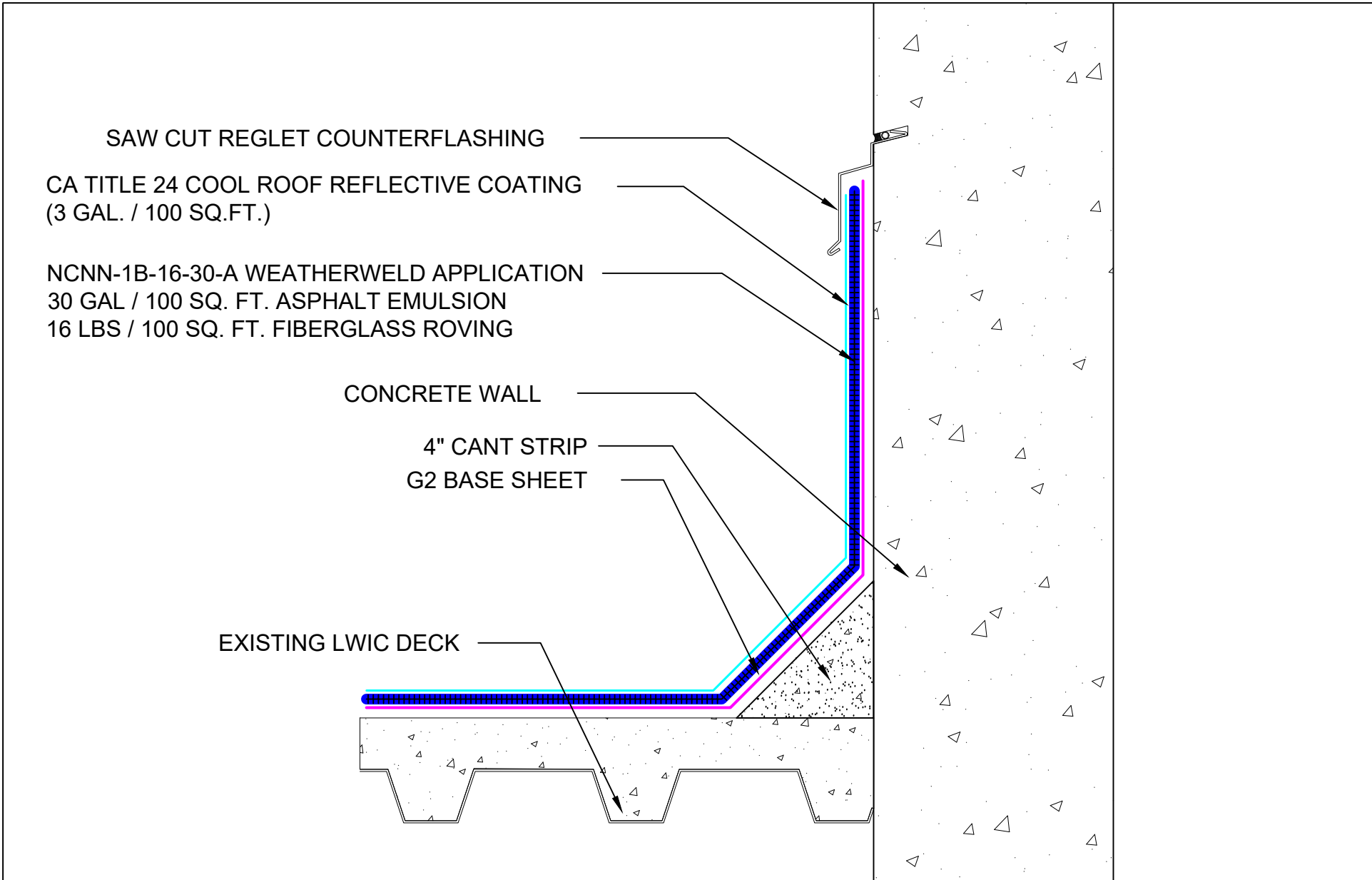
INSTALLED BY:
TBD

DATE:
1/24/24

SCALE:
3" = 1'-0"



SYSTEM: NCN-1B-16-30-A Composite Membrane Over Nailable Deck (Wood / LWIC / Poured Gypsum)	 A DIVISION OF LIQUIFORM TECHNOLOGIES, INC.	9757 7 th Street, Suite 803 Rancho Cucamonga, CA 91730-5297 (888) 440-3224 www.weatherweld.com		PREPARED FOR:	
		DRAWING TITLE: SURFACE MOUNTED COUNTERFLASHING AT CONCRETE WALL	DETAIL NUMBER: 352	DRAWN BY: R. Weygant	PROJECT:
		APPROVED BY: M. Jones	INSTALLED BY: TBD	DATE: 1/24/24	SCALE: 3" = 1'-0"



SYSTEM:
NCN-1B-16-30-A
Composite Membrane Over
Nailable Deck (Wood / LWIC /
Poured Gypsum)

WEATHERWELD
A DIVISION OF LIQUIFORM TECHNOLOGIES, INC.

9757 7th Street, Suite 803
Rancho Cucamonga, CA 91730-5297
(888) 440-3224 | www.weatherweld.com

DRAWING TITLE:
SAW CUT REGLET AT CONCRETE WALL

DETAIL NUMBER:
353

PREPARED FOR:

DRAWN BY:
R. Weygant

PROJECT:

APPROVED BY:
M. Jones

INSTALLED BY:
TBD

DATE:
1/24/24

SCALE:
3" = 1'-0"

CA TITLE 24 COOL ROOF REFLECTIVE COATING (3 GAL. / 100 SQ.FT.)

NCNN-1B-16-30-A WEATHERWELD APPLICATION
30 GAL / 100 SQ. FT. ASPHALT EMULSION
16 LBS / 100 SQ. FT. FIBERGLASS ROVING

EXISTING COUNTERFLASHING

CA TITLE 24 COOL ROOF REFLECTIVE COATING (3 GAL. / 100 SQ.FT.)

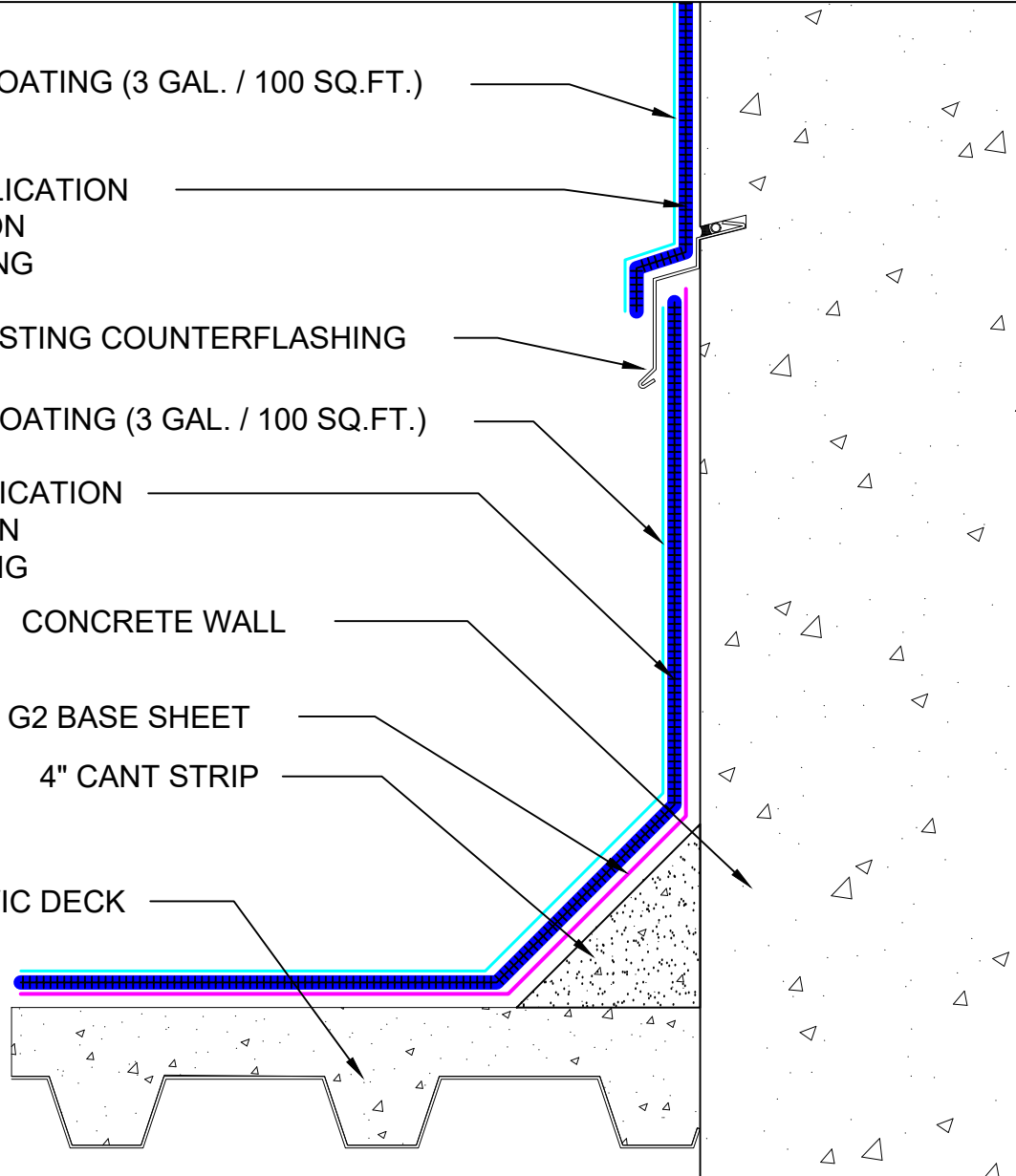
NCNN-1B-16-30-A WEATHERWELD APPLICATION
30 GAL / 100 SQ. FT. ASPHALT EMULSION
16 LBS / 100 SQ. FT. FIBERGLASS ROVING

CONCRETE WALL

G2 BASE SHEET

4" CANT STRIP

EXISTING LWIC DECK



SYSTEM:

NCN-1B-16-30-A

Composite Membrane Over
Nailable Deck (Wood / LWIC /
Poured Gypsum)



9757 7th Street, Suite 803
Rancho Cucamonga, CA 91730-5297
(888) 440-3224 | www.weatherweld.com

DRAWING TITLE:

**CONCRETE WALL WITH EXISTING REGLET
COUNTERFLASHING**

DETAIL NUMBER:

354

PREPARED FOR:

DRAWN BY:
R. Weygant

PROJECT:

APPROVED BY:
M. Jones

INSTALLED BY:
TBD

DATE:
1/24/24

SCALE:
3" = 1'-0"

CA TITLE 24 COOL ROOF REFLECTIVE COATING (3 GAL. / 100 SQ.FT.)

NCNN-1B-16-30-A WEATHERWELD APPLICATION
30 GAL / 100 SQ. FT. ASPHALT EMULSION
16 LBS / 100 SQ. FT. FIBERGLASS ROVING

EXISTING COUNTERFLASHING

CA TITLE 24 COOL ROOF REFLECTIVE COATING (3 GAL. / 100 SQ.FT.)

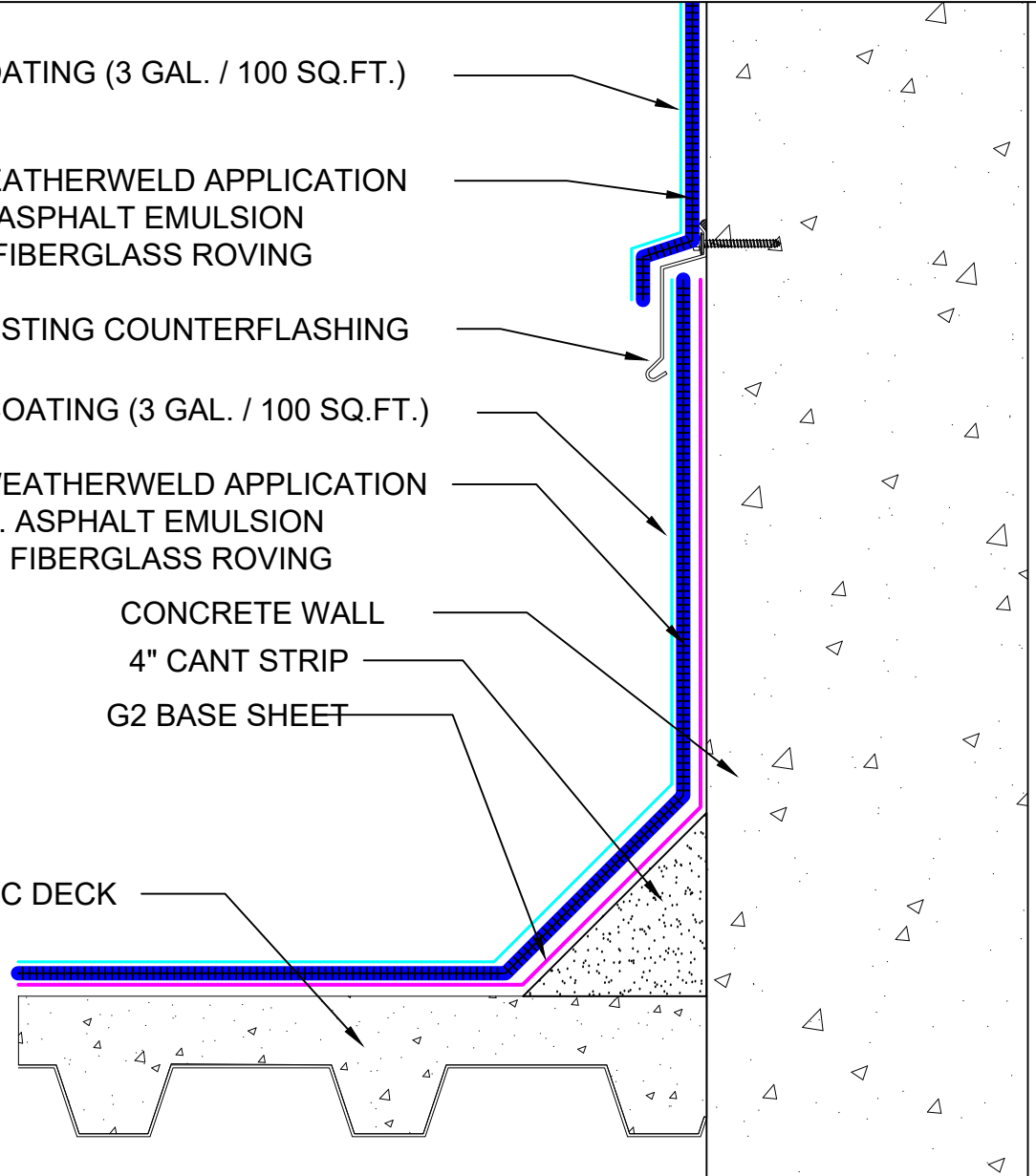
NCNN-1B-16-30-A WEATHERWELD APPLICATION
30 GAL / 100 SQ. FT. ASPHALT EMULSION
16 LBS / 100 SQ. FT. FIBERGLASS ROVING

CONCRETE WALL

4" CANT STRIP

G2 BASE SHEET

EXISTING LWIC DECK



SYSTEM:

NCN-1B-16-30-A

Composite Membrane Over
Nailable Deck (Wood / LWIC /
Poured Gypsum)

WEATHERWELD

A DIVISION OF LIQUIFORM TECHNOLOGIES, INC.

9757 7th Street, Suite 803
Rancho Cucamonga, CA 91730-5297
(888) 440-3224 | www.weatherweld.com

DRAWING TITLE:
**CONCRETE WALL WITH EXISTING SURFACE
MOUNTED COUNTERFLASHING**

DETAIL NUMBER:
355

PREPARED FOR:

DRAWN BY:
R. Weygant

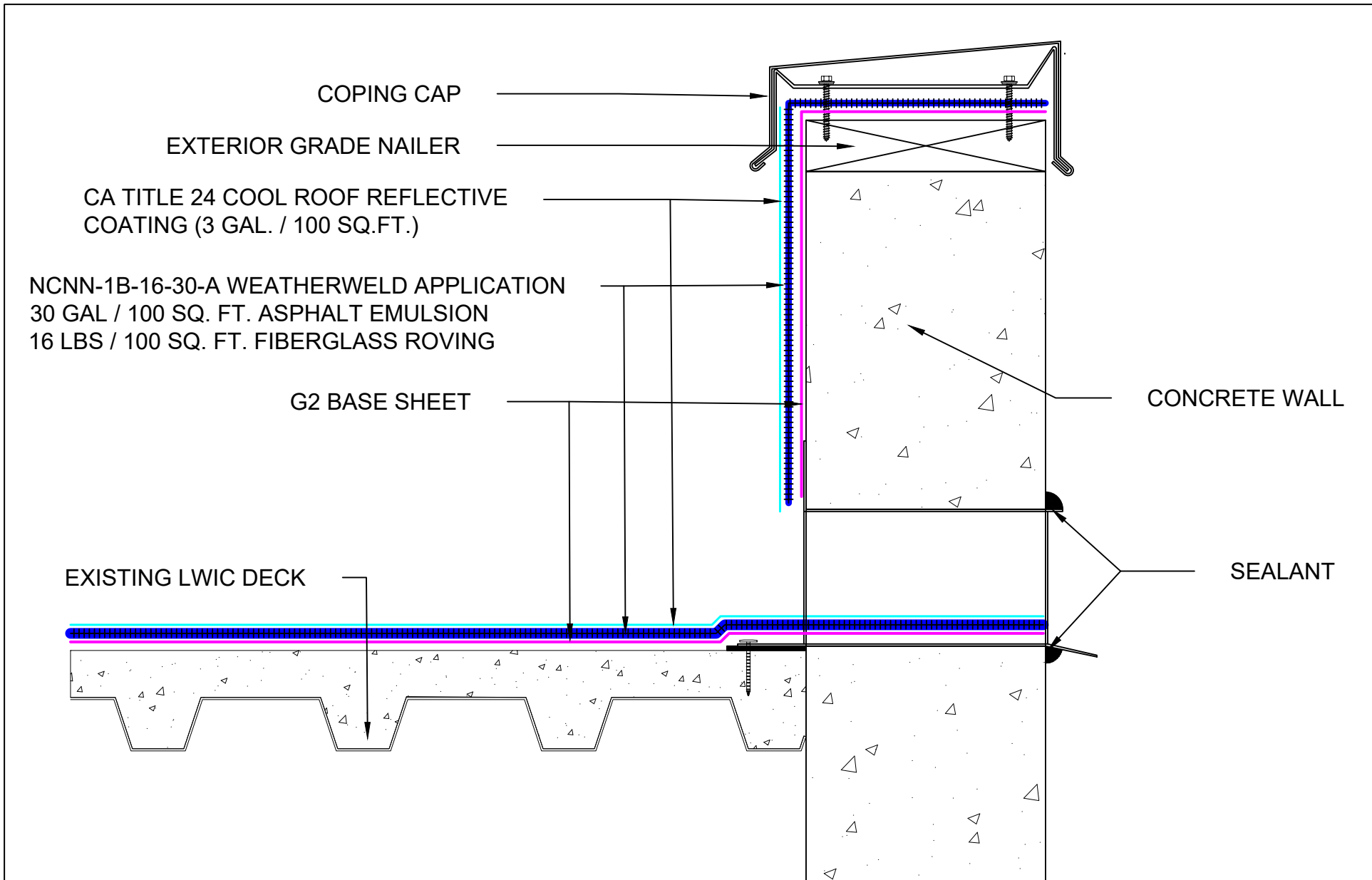
PROJECT:


APPROVED BY:
M. Jones

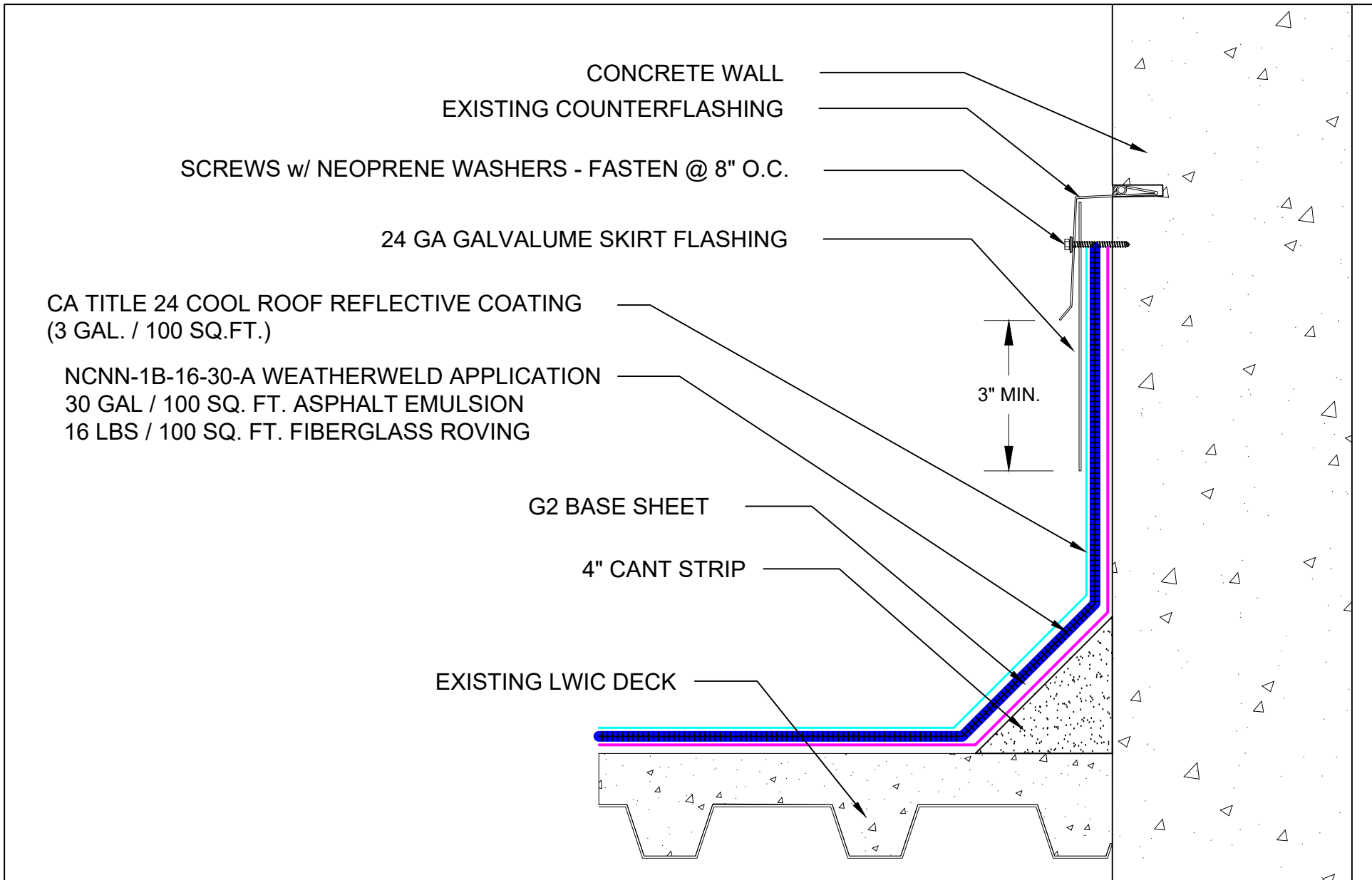
INSTALLED BY:
TBD

DATE:
1/24/24

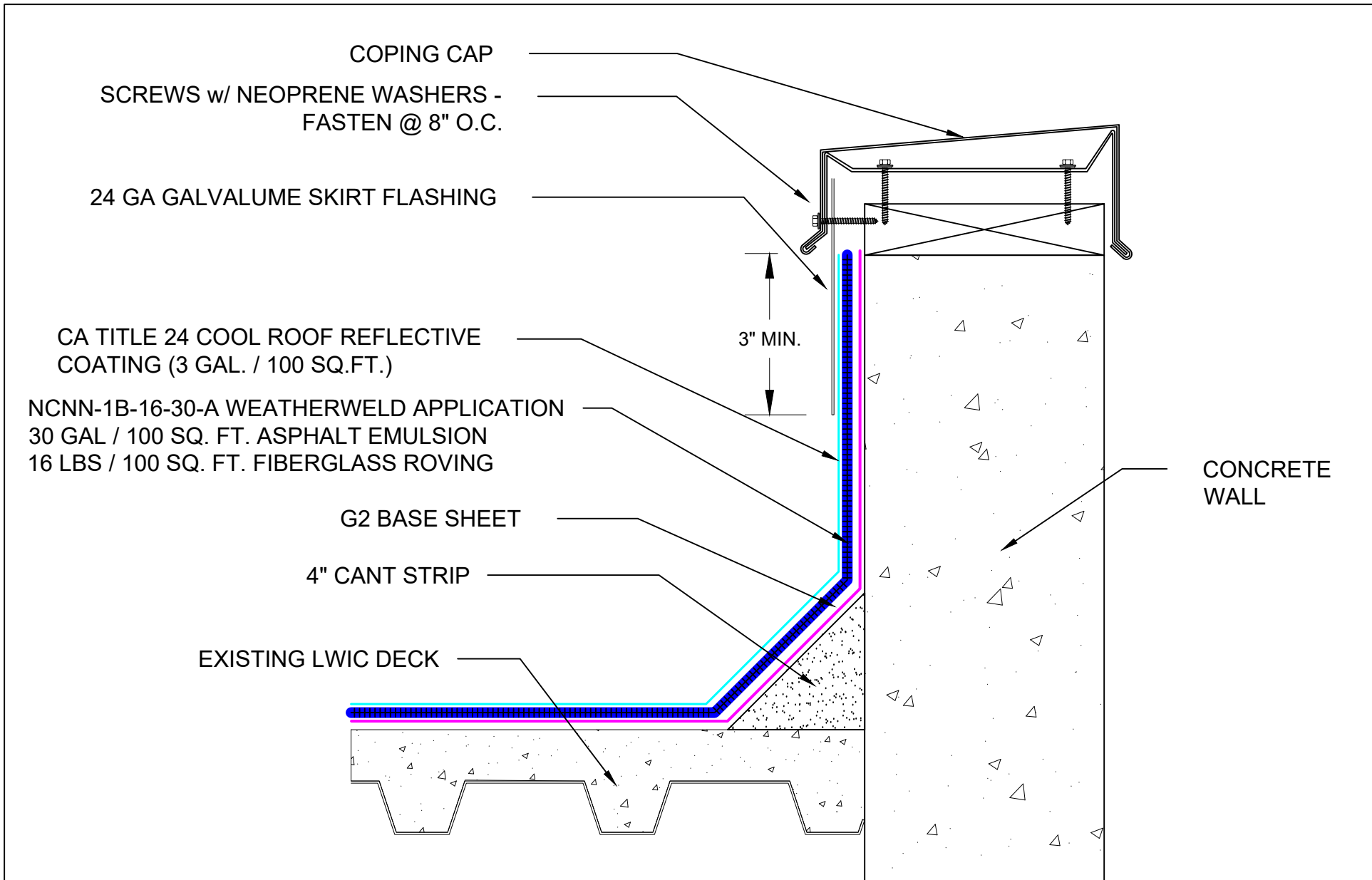
SCALE:
3" = 1'-0"



SYSTEM: NCN-1B-16-30-A Composite Membrane Over Nailable Deck (Wood / LWIC / Poured Gypsum)	 A DIVISION OF LIQUIFORM TECHNOLOGIES, INC.	9757 7 th Street, Suite 803 Rancho Cucamonga, CA 91730-5297 (888) 440-3224 www.weatherweld.com		PREPARED FOR:	
		DRAWING TITLE: THRU WALL SCUPPER FLASHING AT CONCRETE WALL	DETAIL NUMBER: 356	DRAWN BY: R. Weygant	PROJECT:
		APPROVED BY: M. Jones	INSTALLED BY: TBD	DATE: 1/24/24	SCALE: 3" = 1'-0"



<p>SYSTEM:</p> <p>NCN-1B-16-30-A</p> <p>Composite Membrane Over Nailable Deck (Wood / LWIC / Poured Gypsum)</p>	<p>WEATHERWELD A DIVISION OF LIQUIFORM TECHNOLOGIES, INC.</p> <p>9757 7th Street, Suite 803 Rancho Cucamonga, CA 91730-5297 (888) 440-3224 www.weatherweld.com</p>	<p>PREPARED FOR:</p>			
<p>DRAWING TITLE:</p> <p>SKIRTED COUNTERFLASHING AT CONCRETE WALL</p>	<p>DETAIL NUMBER:</p> <p>357</p>	<p>DRAWN BY:</p> <p>R. Weygant</p>	<p>PROJECT:</p>		
		<p>APPROVED BY:</p> <p>M. Jones</p>	<p>INSTALLED BY:</p> <p>TBD</p>	<p>DATE:</p> <p>1/24/24</p>	<p>SCALE:</p> <p>3" = 1'-0"</p>



SYSTEM:
NCN-1B-16-30-A
 Composite Membrane Over
 Nailable Deck (Wood / LWIC /
 Poured Gypsum)

WEATHERWELD
A DIVISION OF LIQUIFORM TECHNOLOGIES, INC.

9757 7th Street, Suite 803
 Rancho Cucamonga, CA 91730-5297
 (888) 440-3224 | www.weatherweld.com

DRAWING TITLE:
SKIRTED COPING AT CONCRETE WALL

DETAIL NUMBER:
359

PREPARED FOR:

DRAWN BY:
R. Weygant

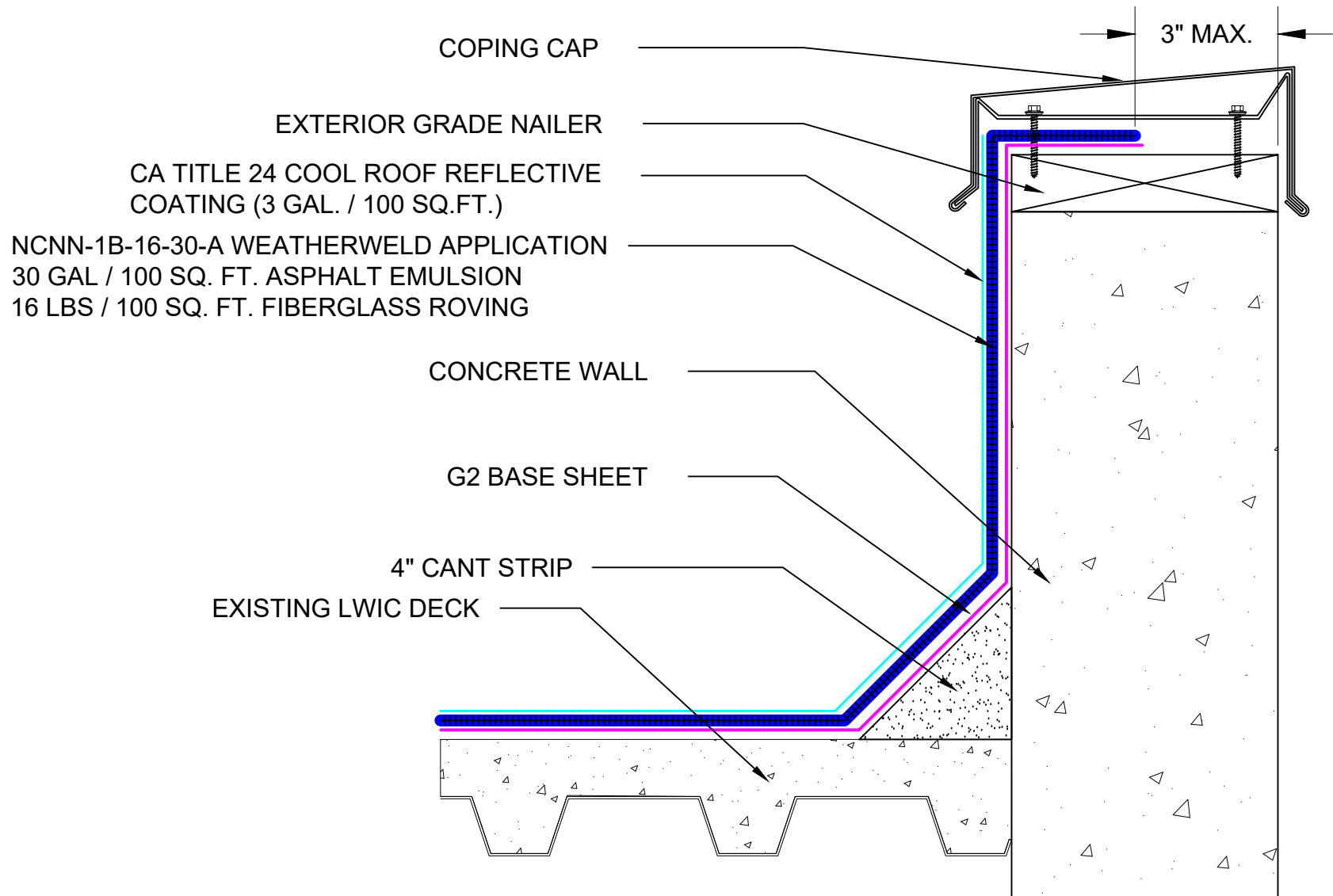
PROJECT:

APPROVED BY:
M. Jones

INSTALLED BY:
TBD

DATE:
1/24/24

SCALE:
3" = 1'-0"



SYSTEM:

NCN-1B-16-30-A

Composite Membrane Over
Nailable Deck (Wood / LWIC /
Poured Gypsum)

WEATHERWELD

A DIVISION OF LIQUIFORM TECHNOLOGIES, INC.

9757 7th Street, Suite 803
Rancho Cucamonga, CA 91730-5297
(888) 440-3224 | www.weatherweld.com

PREPARED FOR:

DRAWING TITLE:

COPING DETAIL AT CONCRETE WALL (ALT)

DETAIL NUMBER:

360

DRAWN BY:

R. Weygant

PROJECT:

APPROVED BY:
M. Jones

INSTALLED BY:
TBD

DATE:
1/24/24

SCALE:
3" = 1'-0"

EXPANSION JOINT COVER - INSTALLED IN ACCORDANCE WITH
MANUFACTURER'S RECOMMENDATIONS

EXPANSION JOINT CURB

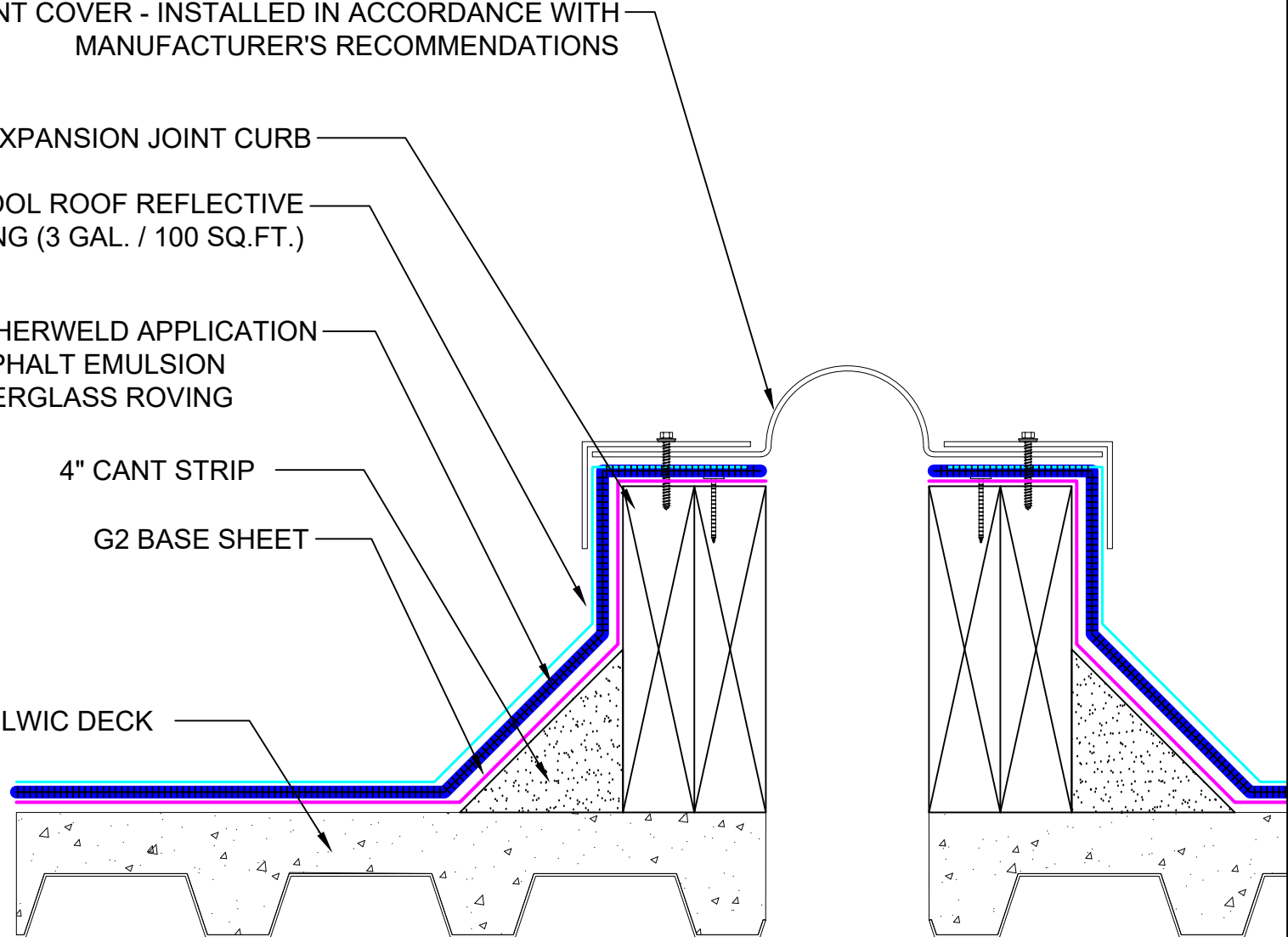
CA TITLE 24 COOL ROOF REFLECTIVE
COATING (3 GAL. / 100 SQ.FT.)

NCNN-1B-16-30-A WEATHERWELD APPLICATION
30 GAL / 100 SQ. FT. ASPHALT EMULSION
16 LBS / 100 SQ. FT. FIBERGLASS ROVING

4" CANT STRIP

G2 BASE SHEET

EXISTING LWIC DECK



SYSTEM:

NCN-1B-16-30-A

Composite Membrane Over
Nailable Deck (Wood / LWIC /
Poured Gypsum)

WEATHERWELD

A DIVISION OF LIQUIFORM TECHNOLOGIES, INC.

9757 7th Street, Suite 803
Rancho Cucamonga, CA 91730-5297
(888) 440-3224 | www.weatherweld.com

DRAWING TITLE:

EXPANSION JOINT

DETAIL NUMBER:

401

PREPARED FOR:

DRAWN BY:
R. Weygant

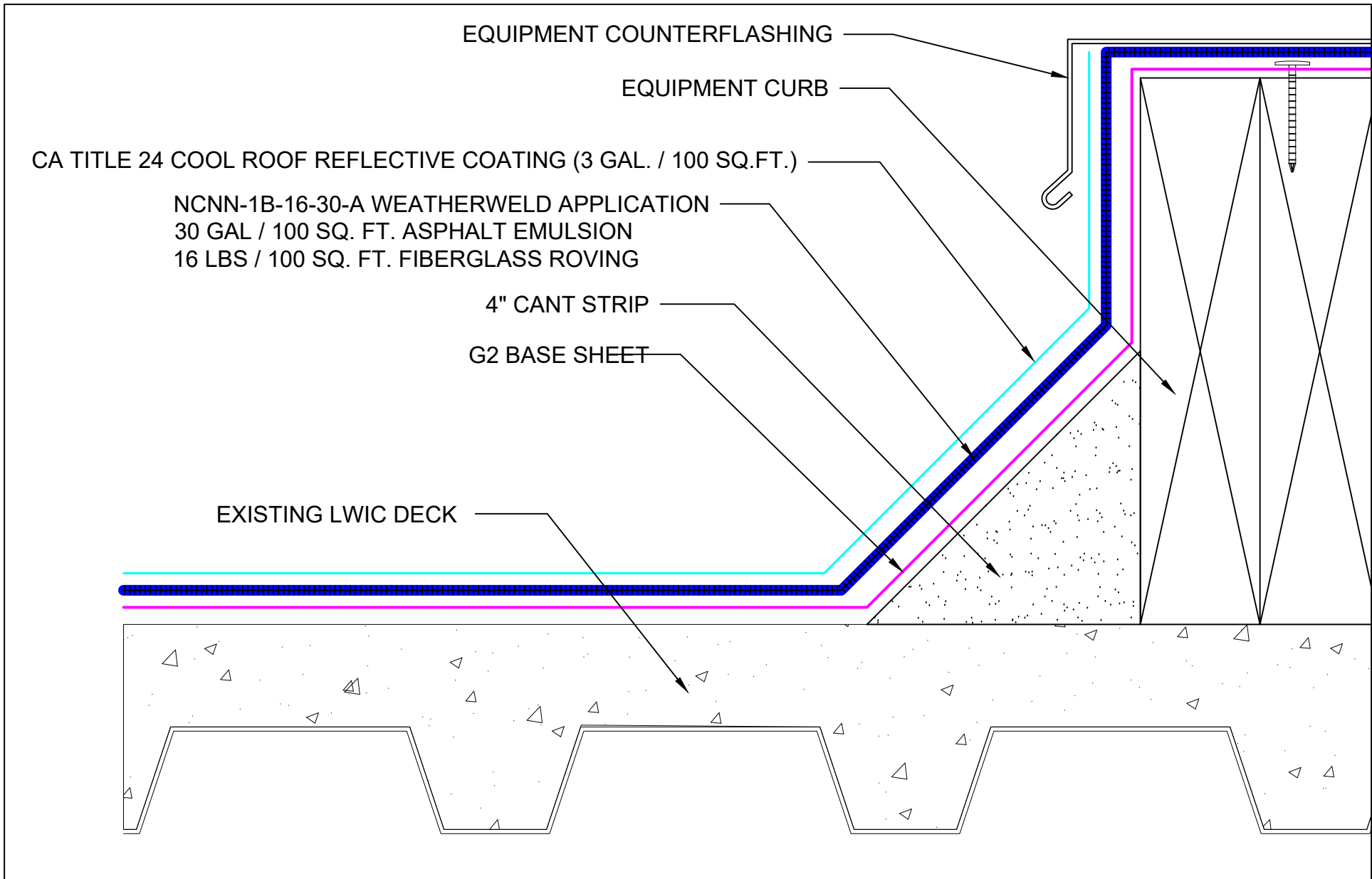
PROJECT:


APPROVED BY:
M. Jones

INSTALLED BY:
TBD

DATE:
1/24/24

SCALE:
3" = 1'-0"



SYSTEM: NCN-1B-16-30-A Composite Membrane Over Nailable Deck (Wood / LWIC / Poured Gypsum)	 A DIVISION OF LIQUIFORM TECHNOLOGIES, INC.	9757 7 th Street, Suite 803 Rancho Cucamonga, CA 91730-5297 (888) 440-3224 www.weatherweld.com		PREPARED FOR:	
		DRAWING TITLE: EQUIPMENT CURB FLASHING	DETAIL NUMBER: 402	DRAWN BY: R. Weygant	PROJECT:
		APPROVED BY: M. Jones	INSTALLED BY: TBD	DATE: 1/24/24	SCALE: 6" = 1'-0"

UNIT SKYLIGHT - FASTENED IN ACCORDANCE WITH SKYLIGHT MANUFACTURERS' RECOMMENDATIONS

SKYLIGHT CURB

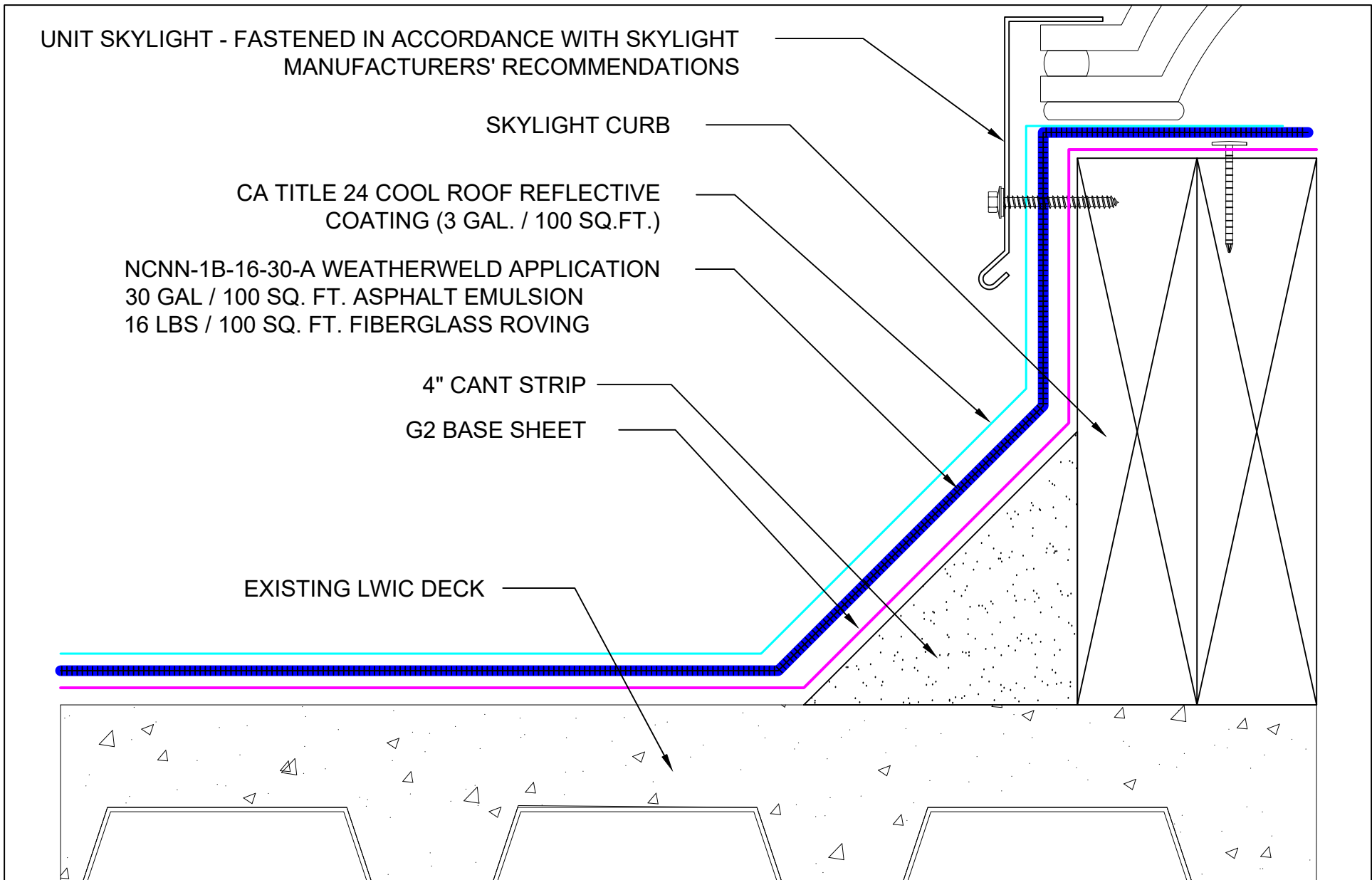
CA TITLE 24 COOL ROOF REFLECTIVE COATING (3 GAL. / 100 SQ.FT.)

NCNN-1B-16-30-A WEATHERWELD APPLICATION
 30 GAL / 100 SQ. FT. ASPHALT EMULSION
 16 LBS / 100 SQ. FT. FIBERGLASS ROVING

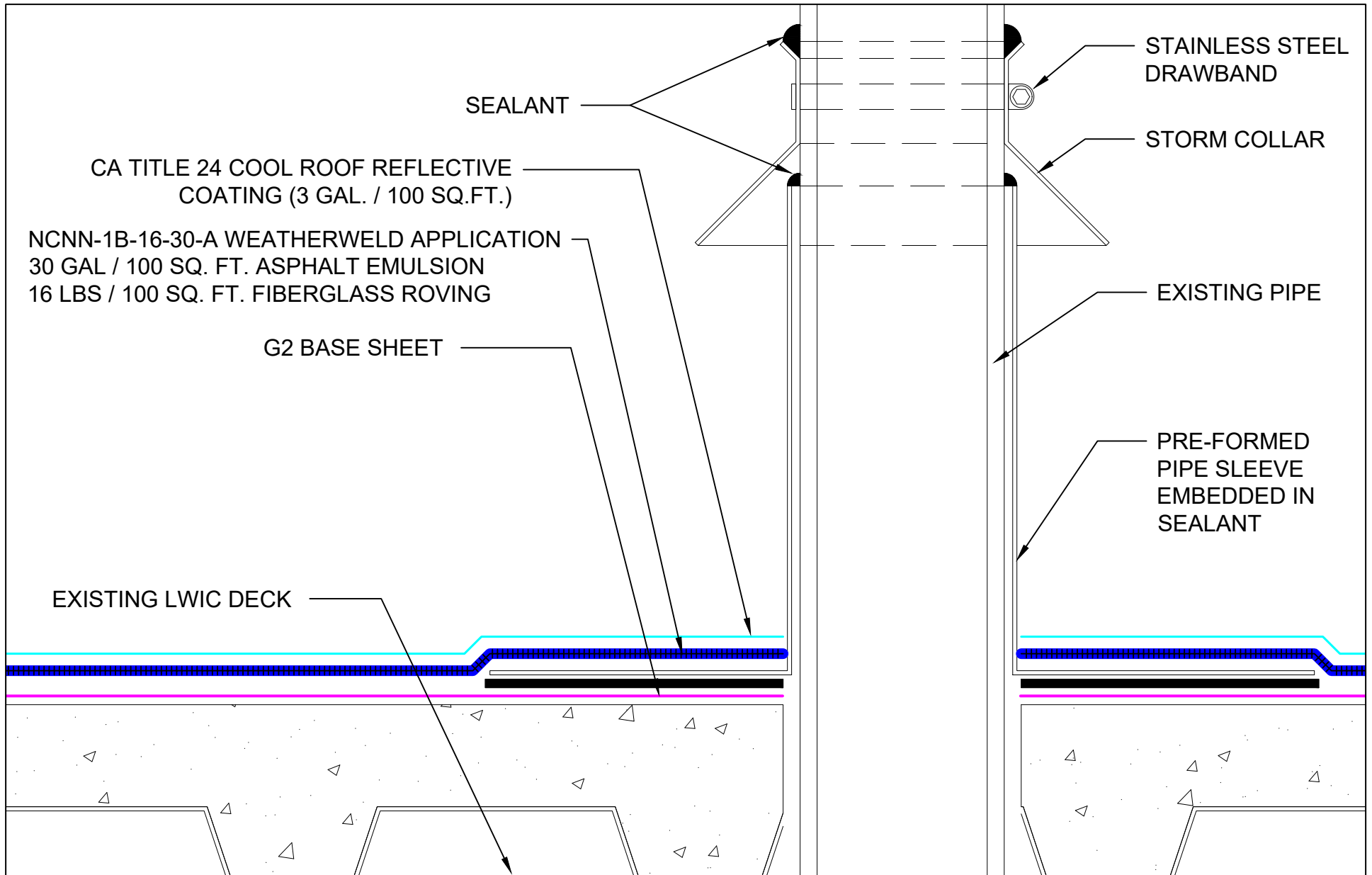
4" CANT STRIP


G2 BASE SHEET

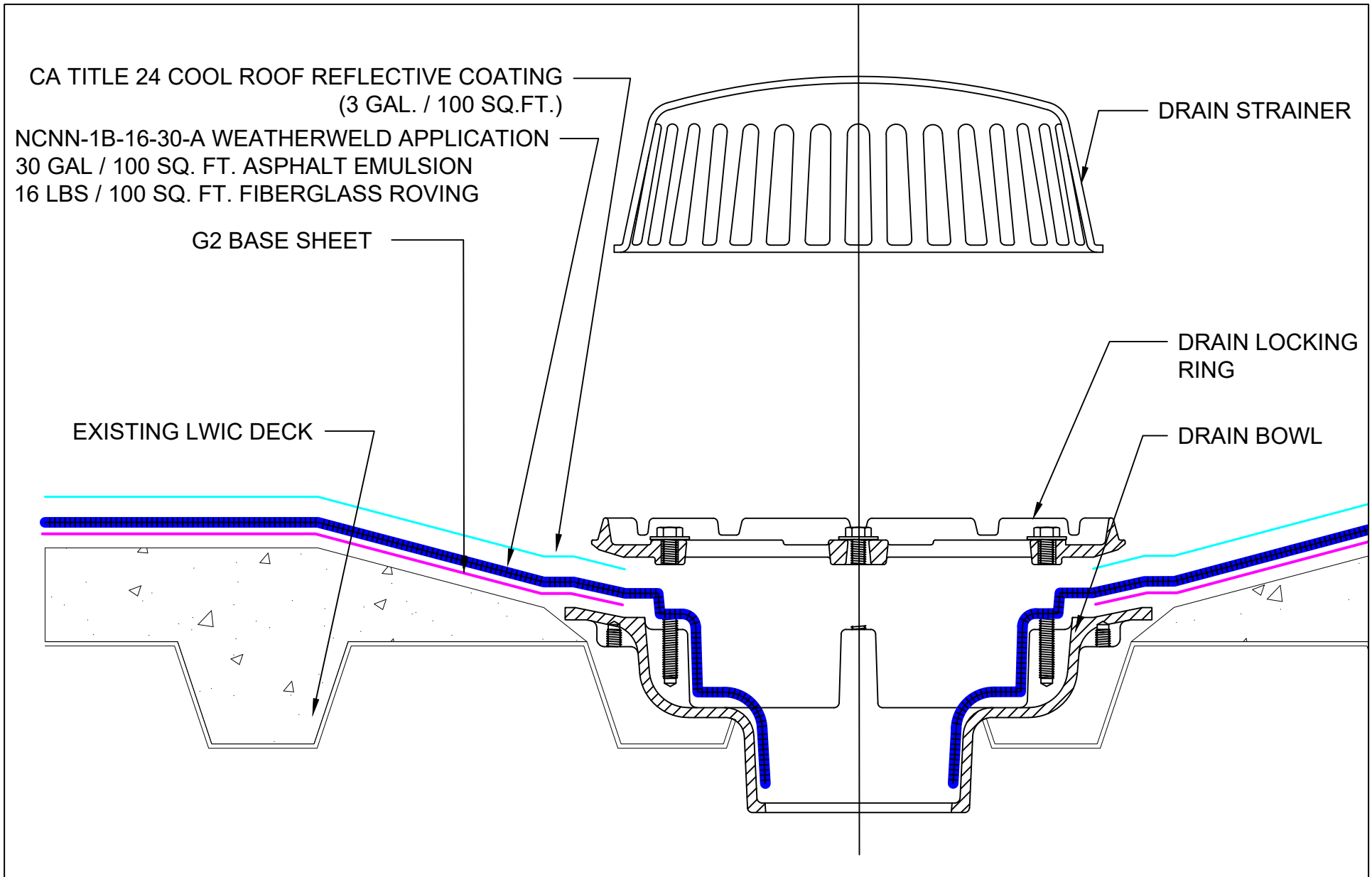
EXISTING LWIC DECK




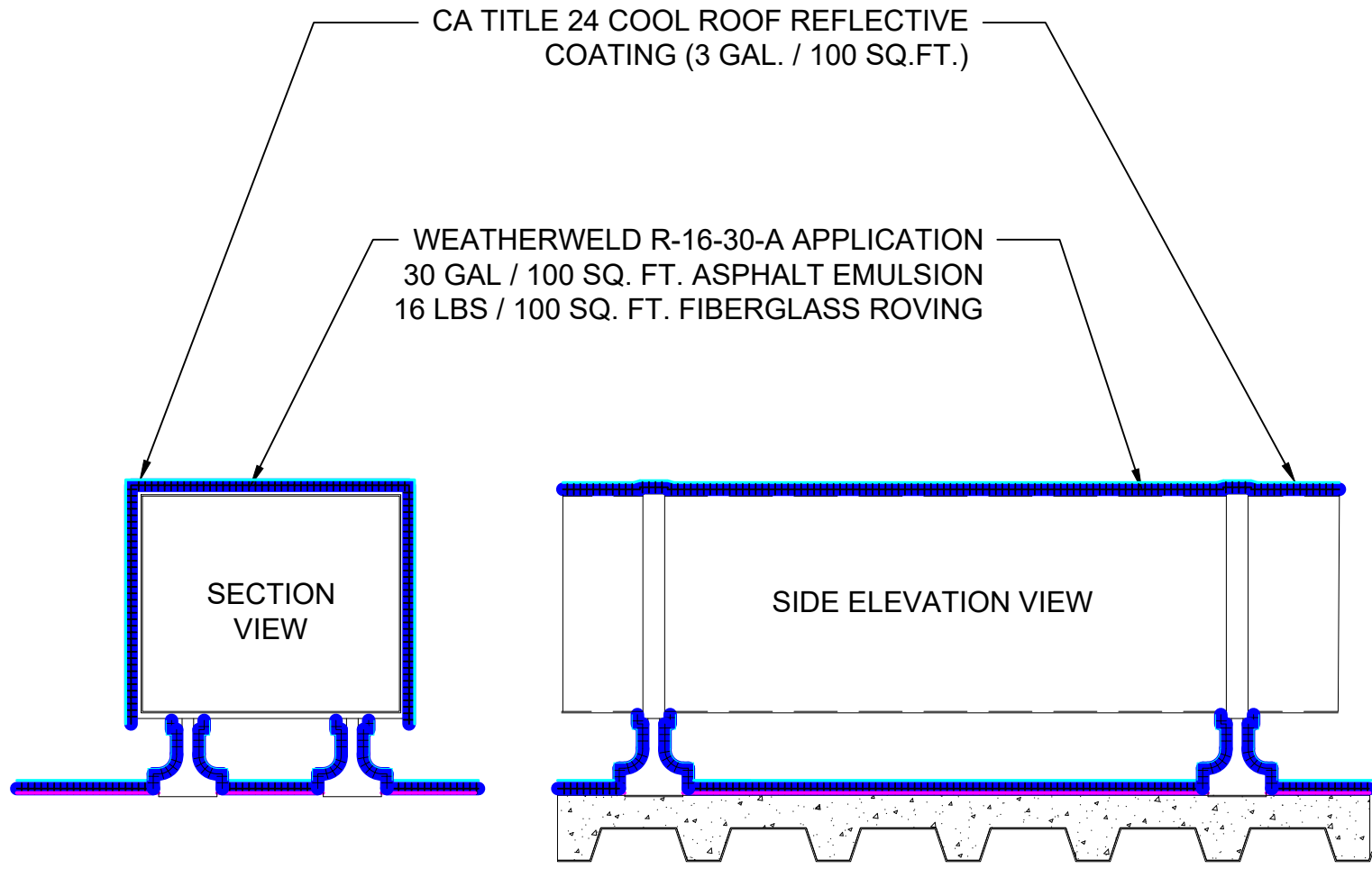
SYSTEM: NCN-1B-16-30-A Composite Membrane Over Nailable Deck (Wood / LWIC / Poured Gypsum)	 A DIVISION OF LIQUIFORM TECHNOLOGIES, INC.	9757 7 th Street, Suite 803 Rancho Cucamonga, CA 91730-5297 (888) 440-3224 www.weatherweld.com	PREPARED FOR:			
			DRAWING TITLE: CURB MOUNTED SKYLIGHT FLASHING	DETAIL NUMBER: 403	DRAWN BY: R. Weygant	PROJECT:
			APPROVED BY: M. Jones	INSTALLED BY: TBD	DATE: 1/24/24	SCALE: 6" = 1'-0"



SYSTEM: NCN-1B-16-30-A Composite Membrane Over Nailable Deck (Wood / LWIC / Poured Gypsum)	 <small>A DIVISION OF LIQUIFORM TECHNOLOGIES, INC.</small>	9757 7 th Street, Suite 803 Rancho Cucamonga, CA 91730-5297 (888) 440-3224 www.weatherweld.com		PREPARED FOR:	
		DRAWING TITLE: PIPE PENETRATION FLASHING	DETAIL NUMBER: 501	DRAWN BY: R. Weygant	PROJECT:
		APPROVED BY: M. Jones	INSTALLED BY: TBD	DATE: 1/24/24	SCALE: 6" = 1'-0"



SYSTEM: NCN-1B-16-30-A	 A DIVISION OF LIQUIFORM TECHNOLOGIES, INC. 9757 7 th Street, Suite 803 Rancho Cucamonga, CA 91730-5297 (888) 440-3224 www.weatherweld.com	PREPARED FOR:						
Composite Membrane Over Nailable Deck (Wood / LWIC / Poured Gypsum)	DRAWING TITLE: DRAIN DETAIL	DETAIL NUMBER: 502	DRAWN BY: R. Weygant	PROJECT:	APPROVED BY: M. Jones	INSTALLED BY: TBD	DATE: 1/24/24	SCALE: 6" = 1'-0"



SYSTEM:

NCN-1B-16-30-A

Composite Membrane Over
Nailable Deck (Wood / LWIC /
Poured Gypsum)



A DIVISION OF LIQUIFORM TECHNOLOGIES, INC.

9757 7th Street, Suite 803
Rancho Cucamonga, CA 91730-5297
(888) 440-3224 | www.weatherweld.com

PREPARED FOR:

DRAWING TITLE:

ROOFTOP DUCT ENCAPSULATION

DETAIL NUMBER:

503

DRAWN BY:

R. Weygant

PROJECT:

APPROVED BY:
M. Jones

INSTALLED BY:
TBD

DATE:

1/24/24

SCALE:

1 1/2" = 1'-0"