

System Overview

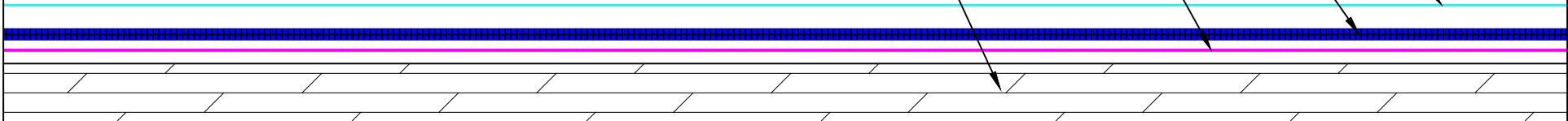
Deck:	Approved Wood Deck
Base Sheet:	G3 BASE Sheet
Insulation / Cover:	-
Asphalt Emulsion:	30 Gal
Fiberglass Roving:	16 Lbs
Coating:	CA Title 24 Cool Roof Reflective Coating (3 Gal. / 100 Sq.Ft.)

CA TITLE 24 COOL ROOF REFLECTIVE COATING (3 GAL. / 100 SQ.FT.)

NCN-1B-16-30-A WEATHERWELD APPLICATION
 30 GAL / 100 SQ. FT. ASPHALT EMULSION
 16 LBS / 100 SQ. FT. FIBERGLASS ROVING

G3 BASE SHEET

EXISTING WOOD DECK



SYSTEM:

NCN-1B-16-30-A

Composite Membrane Over
 Nailable Deck (Wood / LWIC /
 Poured Gypsum)



A DIVISION OF LIQUIFORM TECHNOLOGIES, INC.

9757 7th Street, Suite 803
 Rancho Cucamonga, CA 91730-5297
 (888) 440-3224 | www.weatherweld.com

DRAWING TITLE:

SYSTEM OVERVIEW

DETAIL NUMBER:

101

PREPARED FOR:

DRAWN BY:
R. Weygant

PROJECT:

APPROVED BY:
M. Jones

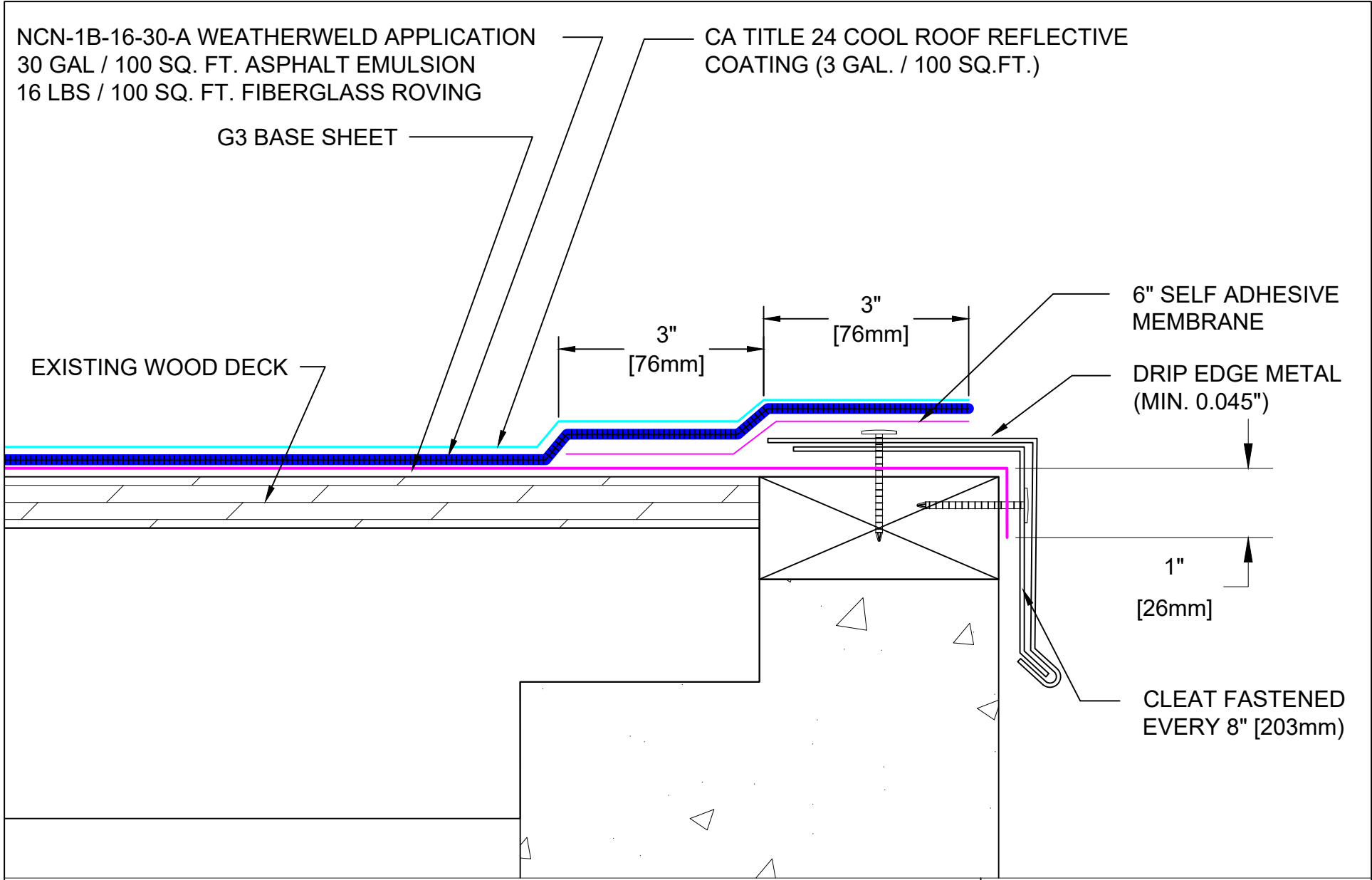
INSTALLED BY:


DATE:

1/24/24

SCALE:

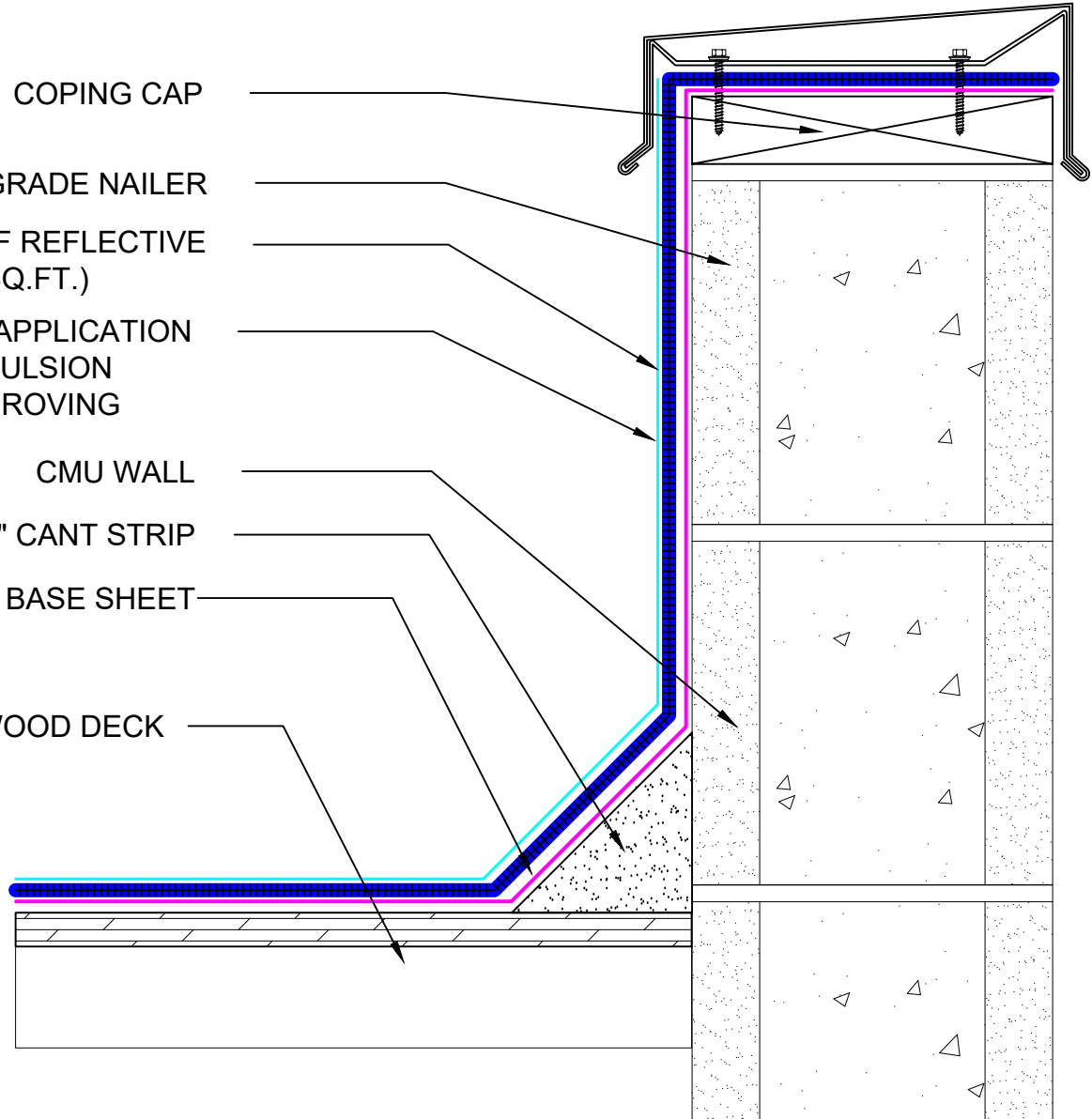
NTS



SYSTEM: NCN-1B-16-30-A	 A DIVISION OF LIQUIFORM TECHNOLOGIES, INC. 9757 7 th Street, Suite 803 Rancho Cucamonga, CA 91730-5297 (888) 440-3224 www.weatherweld.com	PREPARED FOR:						
Composite Membrane Over Nailable Deck (Wood / LWIC / Poured Gypsum)	DRAWING TITLE: EDGE FLASHING	DETAIL NUMBER: 201	DRAWN BY: R. Weygant	PROJECT:	APPROVED BY: M. Jones	INSTALLED BY: TBD	DATE: 1/24/24	SCALE: 6" = 1'-0"

COPING CAP
 EXTERIOR GRADE NAILER
 CA TITLE 24 COOL ROOF REFLECTIVE COATING (3 GAL. / 100 SQ.FT.)
 NCN-1B-16-30-A WEATHERWELD APPLICATION
 30 GAL / 100 SQ. FT. ASPHALT EMULSION
 16 LBS / 100 SQ. FT. FIBERGLASS ROVING

CMU WALL
 4" CANT STRIP
 G3 BASE SHEET
 EXISTING WOOD DECK



SYSTEM:

NCN-1B-16-30-A

Composite Membrane Over
 Nailable Deck (Wood / LWIC /
 Poured Gypsum)



9757 7th Street, Suite 803
 Rancho Cucamonga, CA 91730-5297
 (888) 440-3224 | www.weatherweld.com

PREPARED FOR:

DRAWING TITLE:

COPING CAP FLASHING AT CMU WALL

DETAIL NUMBER:

301

DRAWN BY:

R. Weygant

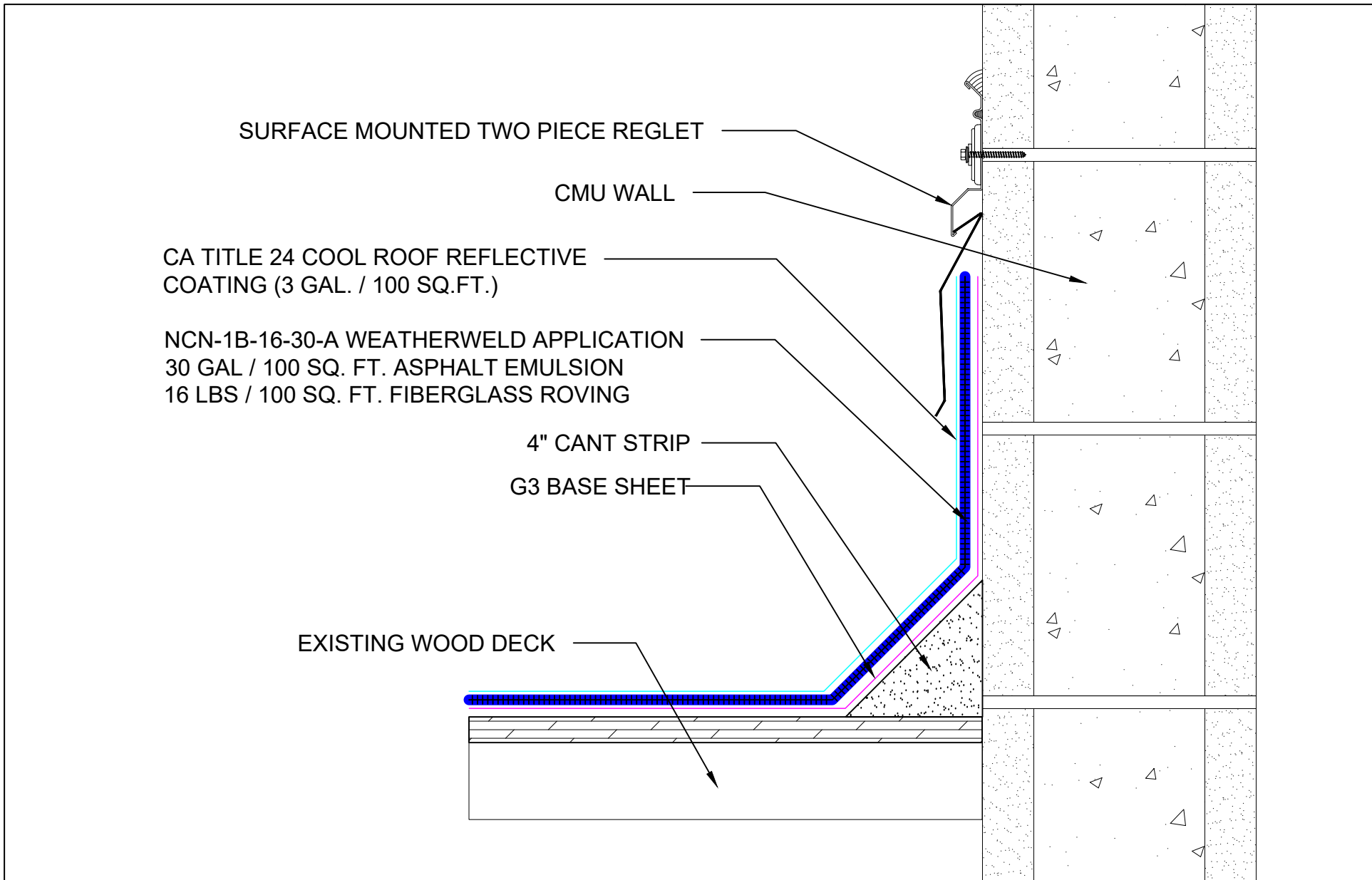
PROJECT:

APPROVED BY:
M. Jones


INSTALLED BY:
TBD

DATE:
1/24/24

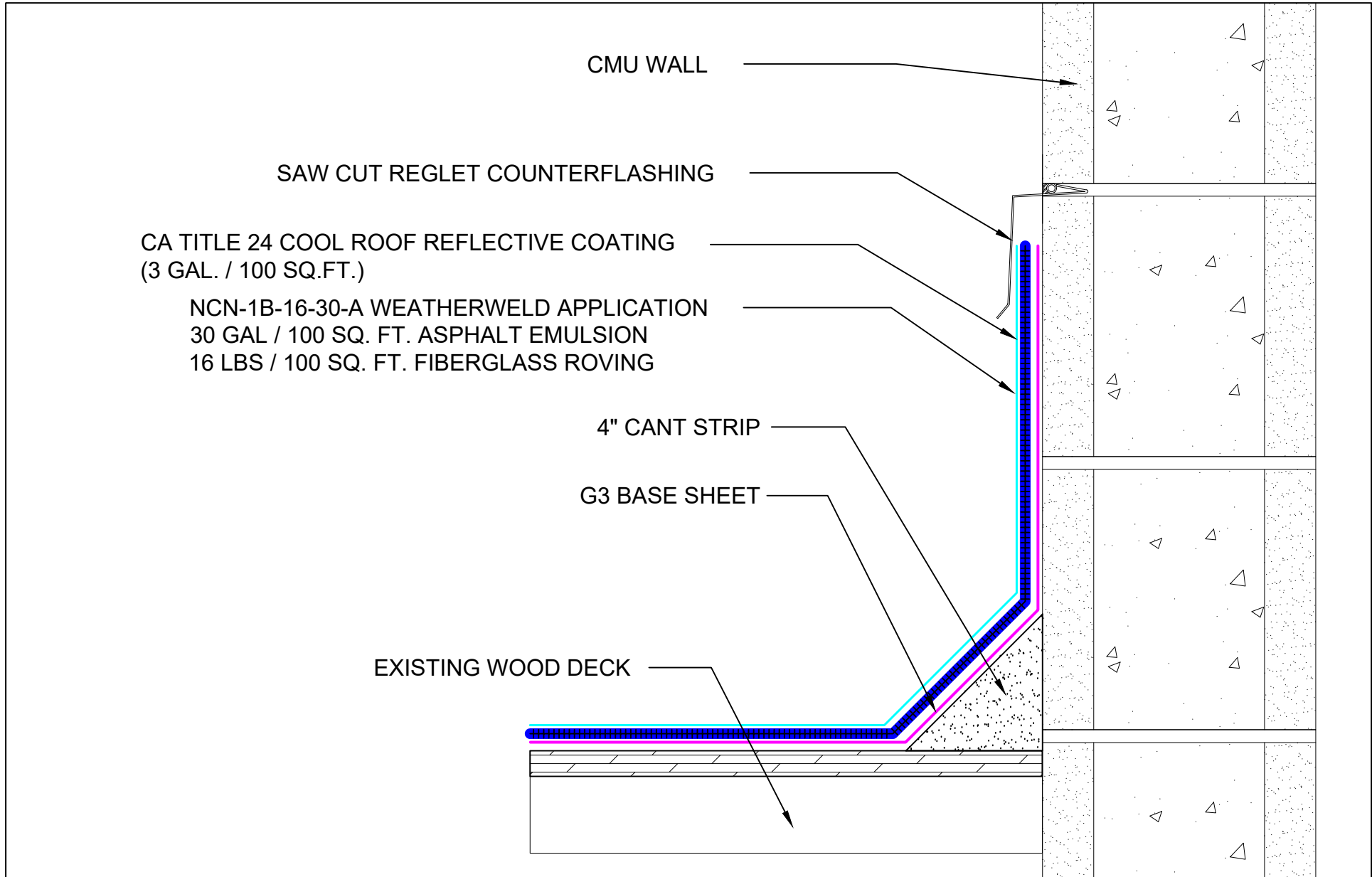
SCALE:
3" = 1'-0"




SYSTEM:
NCN-1B-16-30-A
 Composite Membrane Over
 Nailable Deck (Wood / LWIC /
 Poured Gypsum)


A DIVISION OF LIQUIFORM TECHNOLOGIES, INC.
 9757 7th Street, Suite 803
 Rancho Cucamonga, CA 91730-5297
 (888) 440-3224 | www.weatherweld.com
 DRAWING TITLE:
SURFACE MOUNTED REGLET AT CMU WALL
 DETAIL NUMBER:
302

PREPARED FOR:
 DRAWN BY:
R. Weygant
 PROJECT:
 APPROVED BY:
M. Jones
 INSTALLED BY:
TBD
 DATE:
1/24/24
 SCALE:
3" = 1'-0"



SYSTEM: NCN-1B-16-30-A Composite Membrane Over Nailable Deck (Wood / LWIC / Poured Gypsum)	 A DIVISION OF LIQUIFORM TECHNOLOGIES, INC.	9757 7 th Street, Suite 803 Rancho Cucamonga, CA 91730-5297 (888) 440-3224 www.weatherweld.com	PREPARED FOR:			
			DRAWING TITLE: SAW CUT REGLET AT CMU WALL	DETAIL NUMBER: 303	DRAWN BY: R. Weygant	PROJECT:
			APPROVED BY: M. Jones	INSTALLED BY: TBD	DATE: 1/24/24	SCALE: 3" = 1'-0"

CA TITLE 24 COOL ROOF REFLECTIVE COATING (3 GAL. / 100 SQ.FT.)

NCN-1B-16-30-A WEATHERWELD APPLICATION
30 GAL / 100 SQ. FT. ASPHALT EMULSION
16 LBS / 100 SQ. FT. FIBERGLASS ROVING

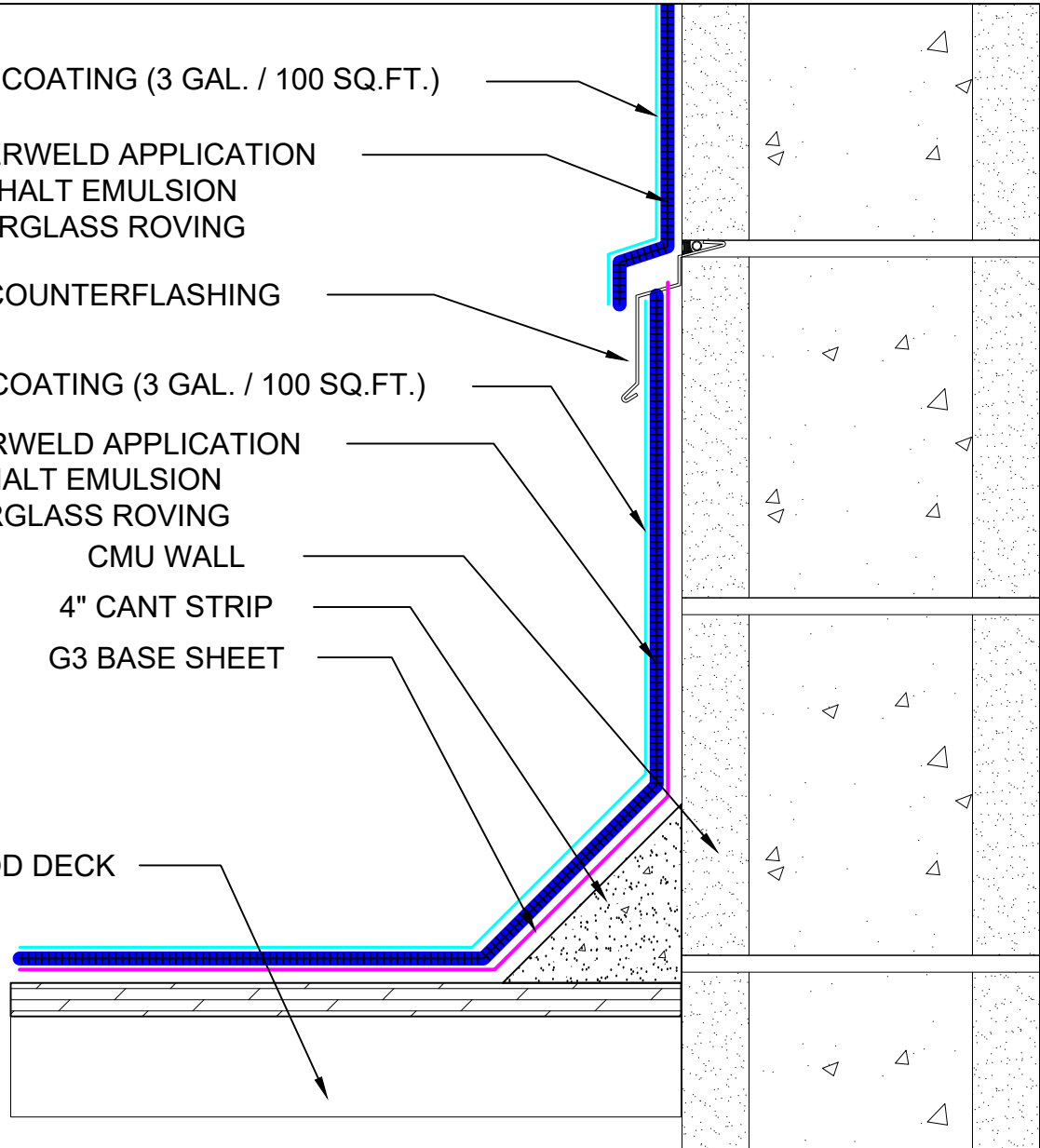
EXISTING COUNTERFLASHING

CA TITLE 24 COOL ROOF REFLECTIVE COATING (3 GAL. / 100 SQ.FT.)

NCN-1B-16-30-A WEATHERWELD APPLICATION
30 GAL / 100 SQ. FT. ASPHALT EMULSION
16 LBS / 100 SQ. FT. FIBERGLASS ROVING

CMU WALL
4" CANT STRIP
G3 BASE SHEET

EXISTING WOOD DECK



SYSTEM:

NCN-1B-16-30-A

Composite Membrane Over
Nailable Deck (Wood / LWIC /
Poured Gypsum)



9757 7th Street, Suite 803
Rancho Cucamonga, CA 91730-5297
(888) 440-3224 | www.weatherweld.com

PREPARED FOR:

DRAWING TITLE:

**CMU WALL WITH EXISTING REGLET
COUNTERFLASHING**

DETAIL NUMBER:

304

DRAWN BY:

R. Weygant

PROJECT:

APPROVED BY:
M. Jones

INSTALLED BY:
TBD

DATE:
1/24/24

SCALE:
3" = 1'-0"

CA TITLE 24 COOL ROOF REFLECTIVE COATING (3 GAL. / 100 SQ.FT.)

NCN-1B-16-30-A WEATHERWELD APPLICATION
 30 GAL / 100 SQ. FT. ASPHALT EMULSION
 16 LBS / 100 SQ. FT. FIBERGLASS ROVING

EXISTING COUNTERFLASHING

CA TITLE 24 COOL ROOF REFLECTIVE COATING (3 GAL. / 100 SQ.FT.)

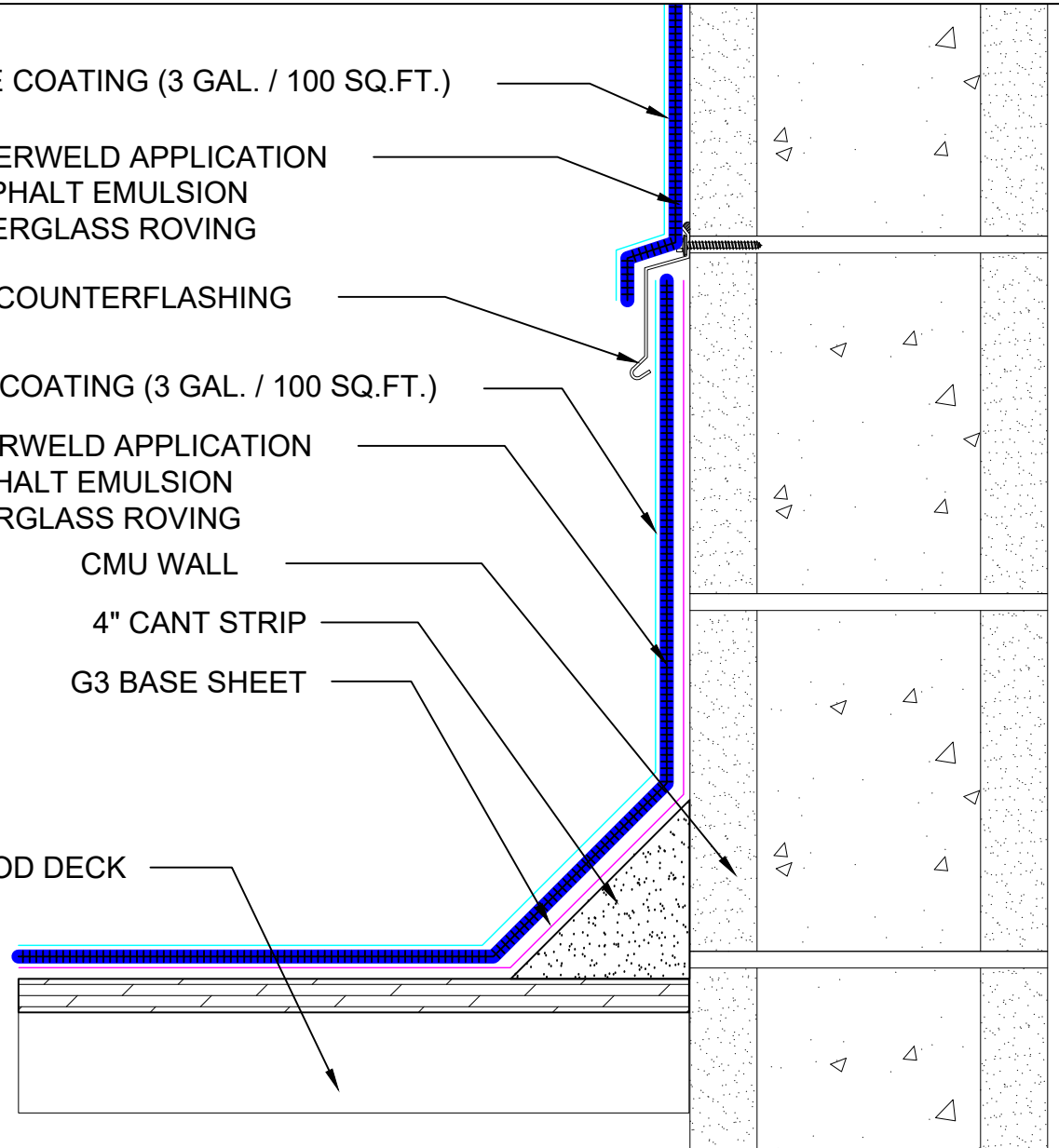
NCN-1B-16-30-A WEATHERWELD APPLICATION
 30 GAL / 100 SQ. FT. ASPHALT EMULSION
 16 LBS / 100 SQ. FT. FIBERGLASS ROVING

CMU WALL

4" CANT STRIP

G3 BASE SHEET

EXISTING WOOD DECK



SYSTEM:

NCN-1B-16-30-A

Composite Membrane Over
 Nailable Deck (Wood / LWIC /
 Poured Gypsum)



9757 7th Street, Suite 803
 Rancho Cucamonga, CA 91730-5297
 (888) 440-3224 | www.weatherweld.com

PREPARED FOR:

DRAWING TITLE:

**CMU WALL WITH EXISTING SURFACE
 MOUNTED COUNTERFLASHING**

DETAIL NUMBER:

305

DRAWN BY:

R. Weygant

PROJECT:

APPROVED BY:
M. Jones

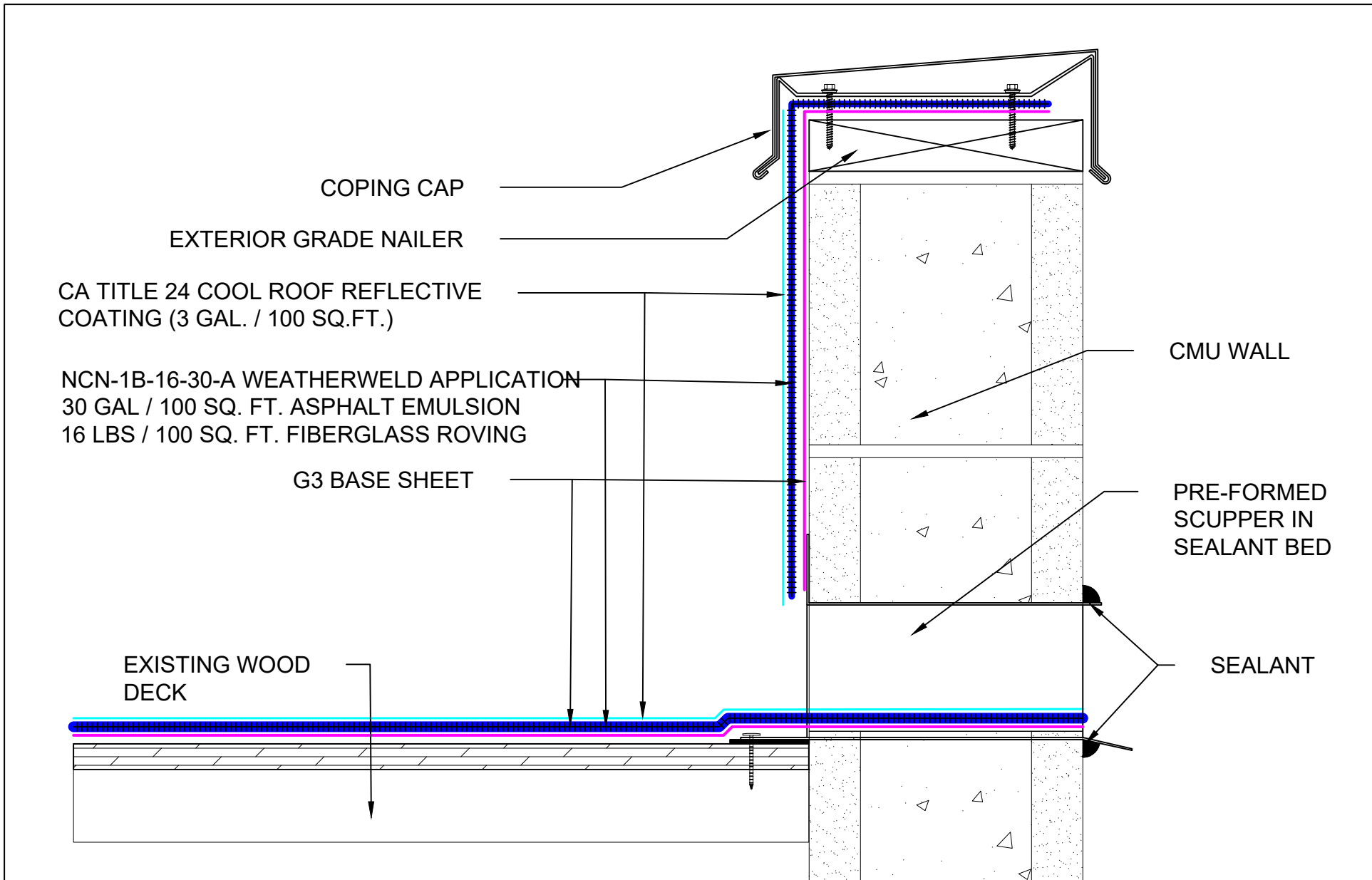
INSTALLED BY:
TBD


DATE:

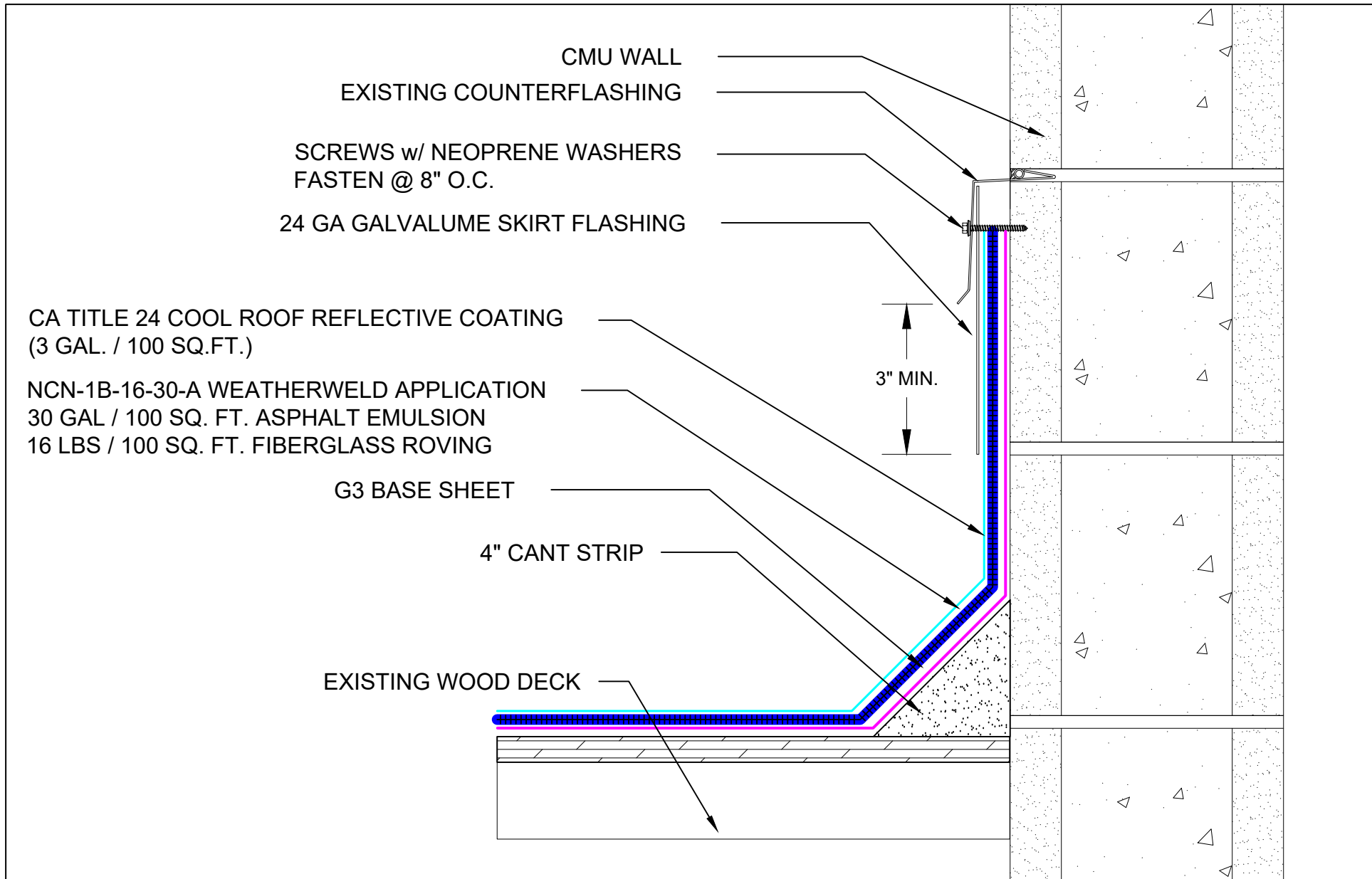
1/24/24


SCALE:

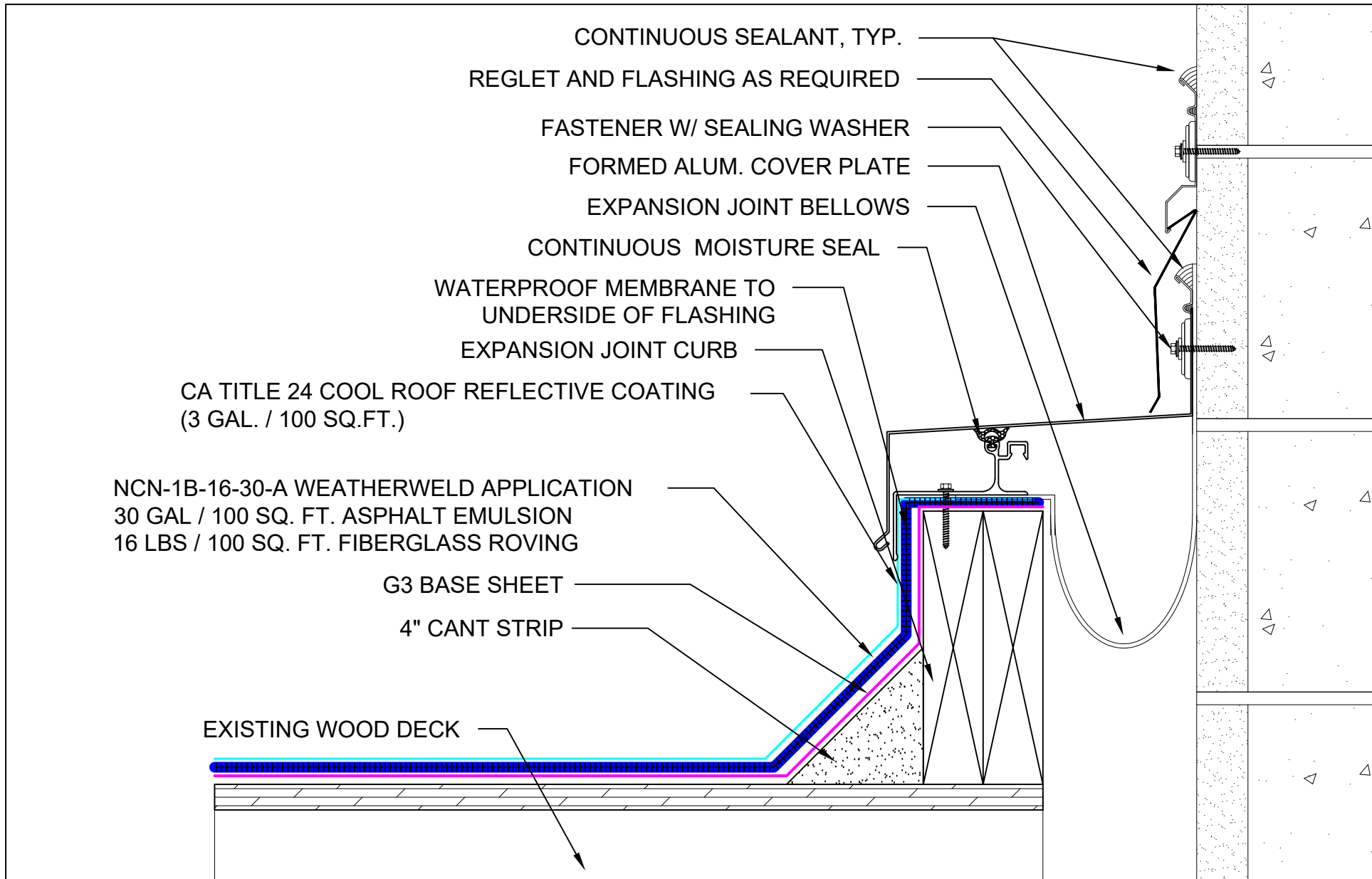
3" = 1'-0"




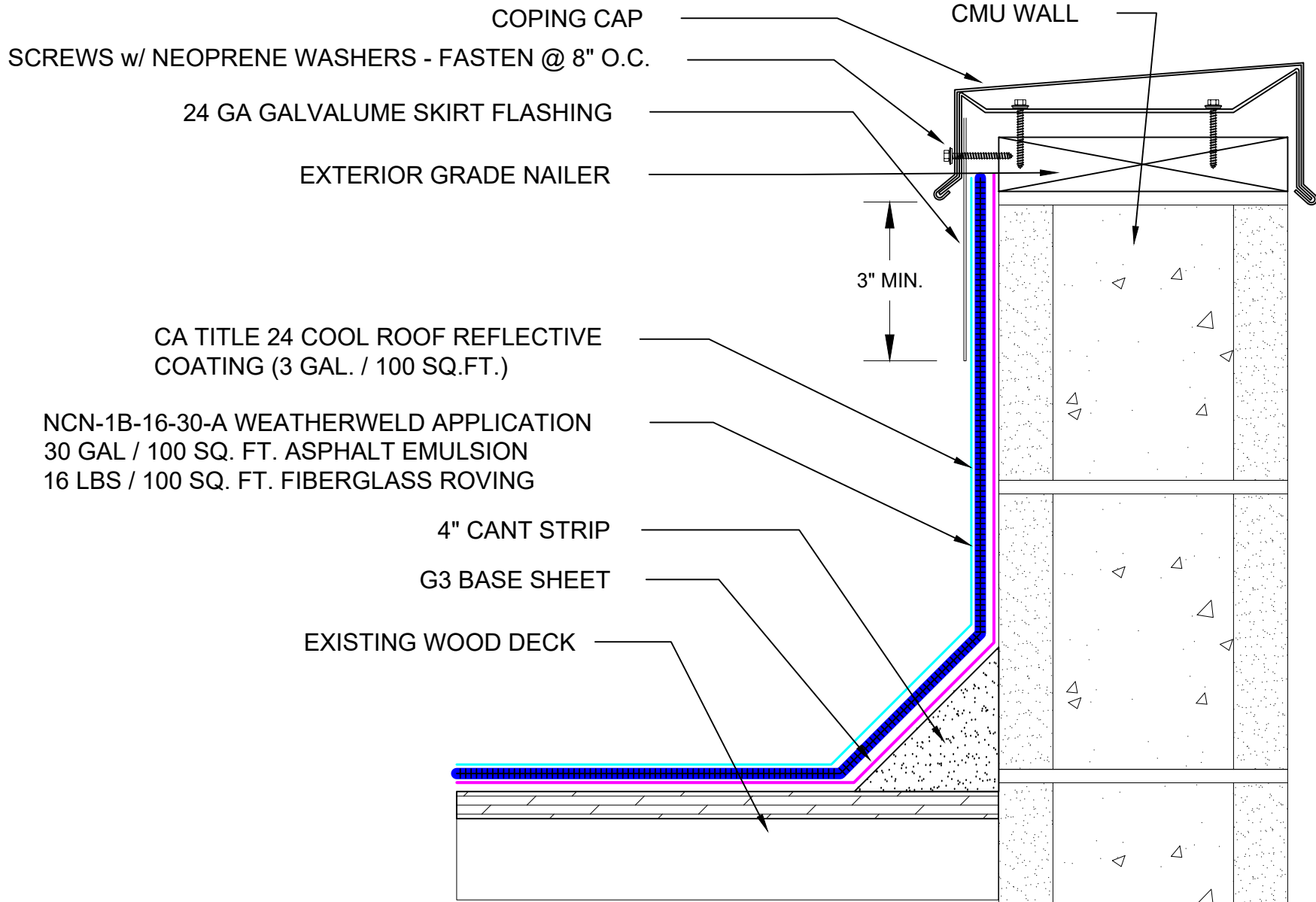
SYSTEM: NCN-1B-16-30-A	 A DIVISION OF LIQUIFORM TECHNOLOGIES, INC. 9757 7 th Street, Suite 803 Rancho Cucamonga, CA 91730-5297 (888) 440-3224 www.weatherweld.com	PREPARED FOR:				
Composite Membrane Over Nailable Deck (Wood / LWIC / Poured Gypsum)	DRAWING TITLE: THRU WALL SCUPPER FLASHING AT CMU WALL	DETAIL NUMBER: 306	DRAWN BY: R. Weygant	PROJECT:		
			APPROVED BY: M. Jones	INSTALLED BY: TBD	DATE: 1/24/24	SCALE: 3" = 1'-0"



SYSTEM: NCN-1B-16-30-A Composite Membrane Over Nailable Deck (Wood / LWIC / Poured Gypsum)	 <small>A DIVISION OF LIQUIFORM TECHNOLOGIES, INC.</small>	9757 7 th Street, Suite 803 Rancho Cucamonga, CA 91730-5297 (888) 440-3224 www.weatherweld.com		PREPARED FOR:		
		DRAWING TITLE: SKIRTED COUNTERFLASHING AT CMU WALL	DETAIL NUMBER: 307	DRAWN BY: R. Weygant	PROJECT:	
		APPROVED BY: M. Jones	INSTALLED BY: TBD	DATE: 1/24/24	SCALE: 3" = 1'-0"	



SYSTEM: NCN-1B-16-30-A	 A DIVISION OF LIQUIFORM TECHNOLOGIES, INC. 9757 7 th Street, Suite 803 Rancho Cucamonga, CA 91730-5297 (888) 440-3224 www.weatherweld.com	PREPARED FOR:						
Composite Membrane Over Nailable Deck (Wood / LWIC / Poured Gypsum)	DRAWING TITLE: EXPANSION JOINT AT CMU WALL	DETAIL NUMBER: 308	DRAWN BY: R. Weygant	PROJECT:	APPROVED BY: M. Jones	INSTALLED BY: TBD	DATE: 1/24/24	SCALE: 3" = 1'-0"



SYSTEM:

NCN-1B-16-30-A

Composite Membrane Over
Nailable Deck (Wood / LWIC /
Poured Gypsum)

WEATHERWELD

A DIVISION OF LIQUIFORM TECHNOLOGIES, INC.

9757 7th Street, Suite 803
Rancho Cucamonga, CA 91730-5297
(888) 440-3224 | www.weatherweld.com

DRAWING TITLE:

SKIRTED COPING DETAIL AT CMU WALL

DETAIL NUMBER:

309

PREPARED FOR:

DRAWN BY:

R. Weygant

PROJECT:

APPROVED BY:
M. Jones

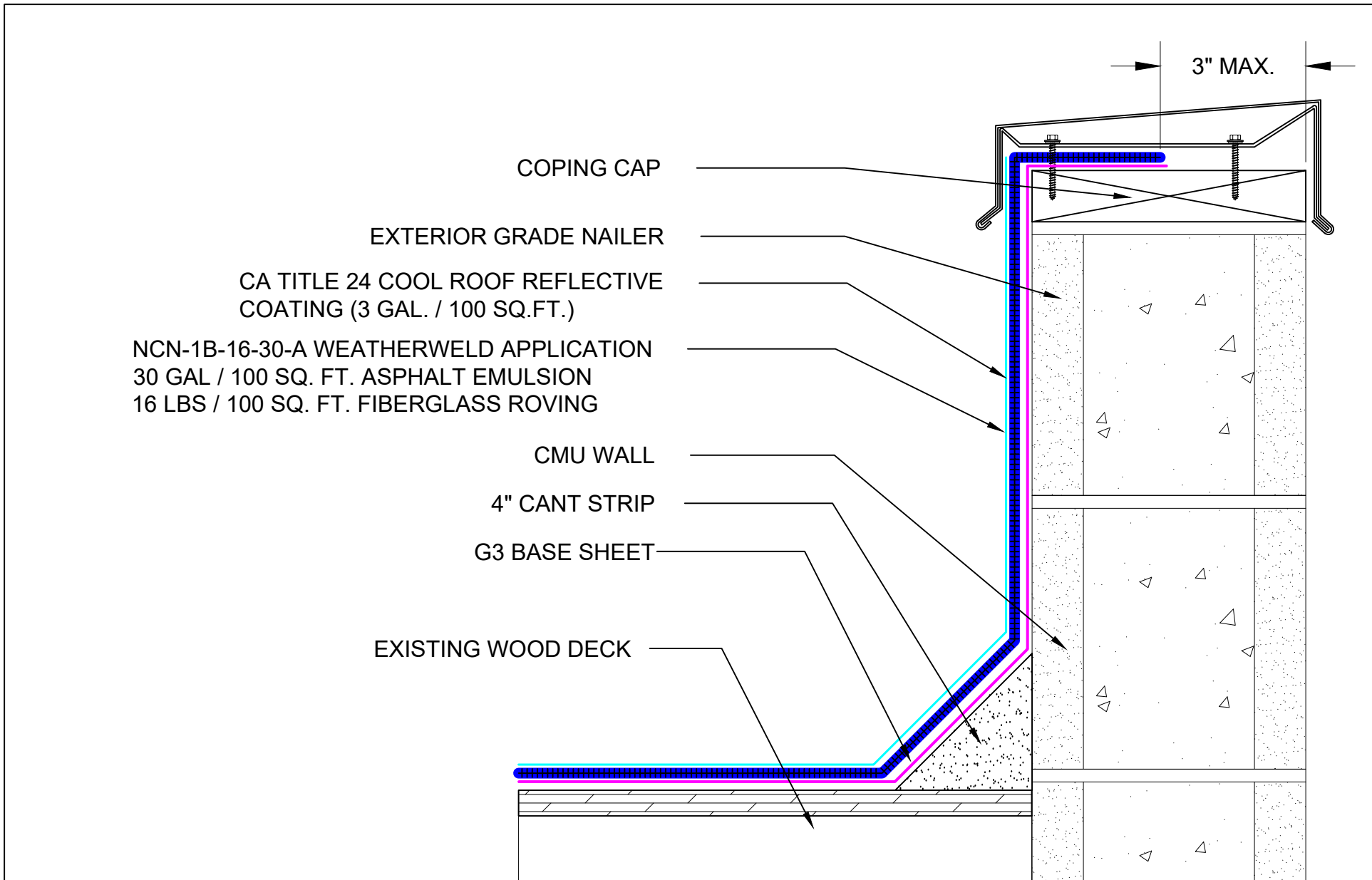
INSTALLED BY:
TBD

DATE:

1/24/24

SCALE:

3" = 1'-0"



COPING CAP

EXTERIOR GRADE NAILER

CA TITLE 24 COOL ROOF REFLECTIVE COATING (3 GAL. / 100 SQ.FT.)

NCN-1B-16-30-A WEATHERWELD APPLICATION
30 GAL / 100 SQ. FT. ASPHALT EMULSION
16 LBS / 100 SQ. FT. FIBERGLASS ROVING


CMU WALL

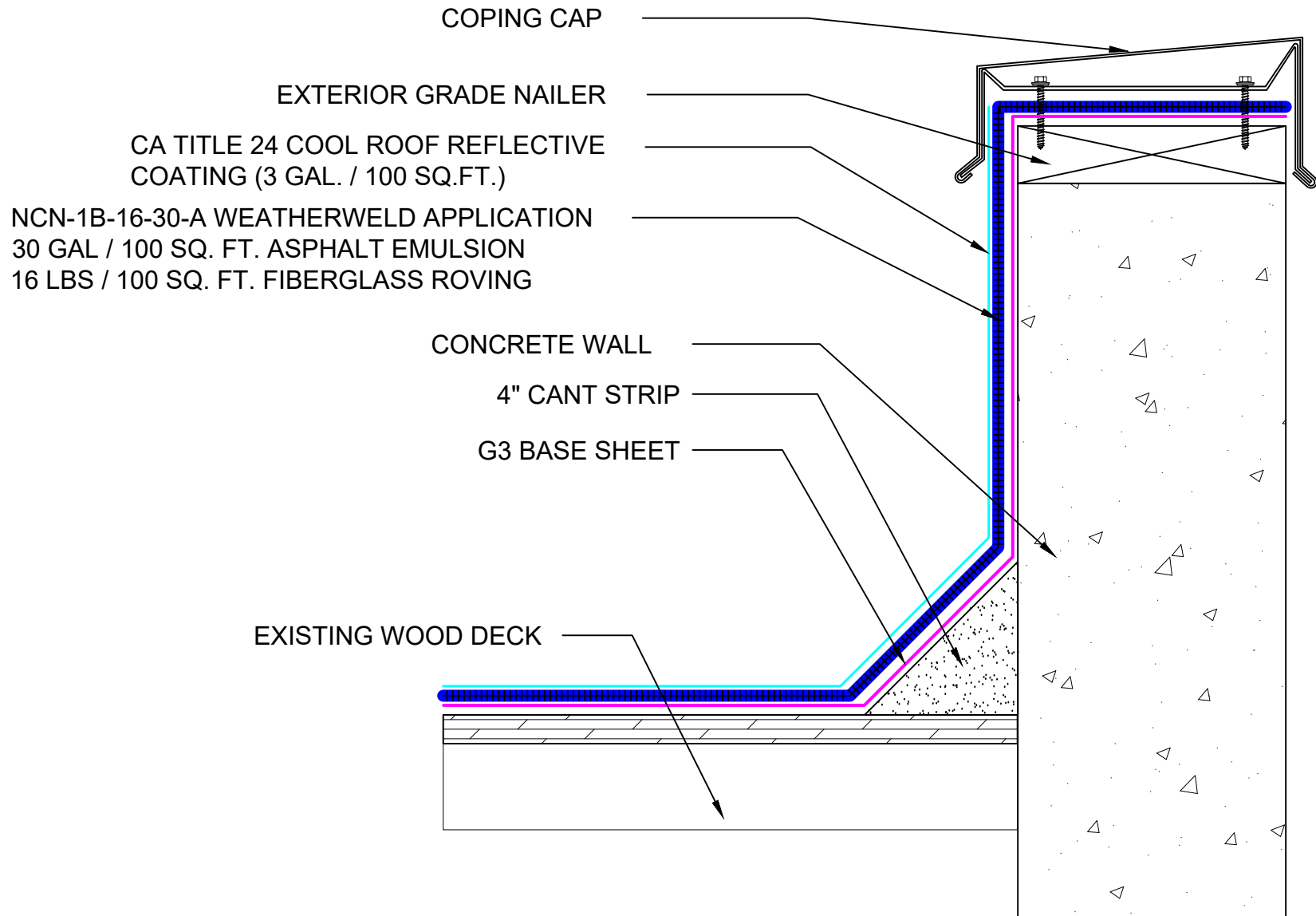
4" CANT STRIP

G3 BASE SHEET

EXISTING WOOD DECK

3" MAX.

SYSTEM: NCN-1B-16-30-A Composite Membrane Over Nailable Deck (Wood / LWIC / Poured Gypsum)	 <small>A DIVISION OF LIQUIFORM TECHNOLOGIES, INC.</small>	9757 7 th Street, Suite 803 Rancho Cucamonga, CA 91730-5297 (888) 440-3224 www.weatherweld.com		PREPARED FOR:		
		DRAWING TITLE: COPING DETAIL AT CMU WALL (ALT)	DETAIL NUMBER: 310	DRAWN BY: R. Weygant	PROJECT:	
		APPROVED BY: M. Jones	INSTALLED BY: TBD	DATE: 1/24/24	SCALE: 3" = 1'-0"	



SYSTEM:

NCN-1B-16-30-A

Composite Membrane Over
Nailable Deck (Wood / LWIC /
Poured Gypsum)

WEATHERWELD

A DIVISION OF LIQUIFORM TECHNOLOGIES, INC.

9757 7th Street, Suite 803
Rancho Cucamonga, CA 91730-5297
(888) 440-3224 | www.weatherweld.com

PREPARED FOR:

DRAWING TITLE:
COPING CAP FLASHING AT CONCRETE WALL

DETAIL NUMBER:
351

DRAWN BY:
R. Weygant

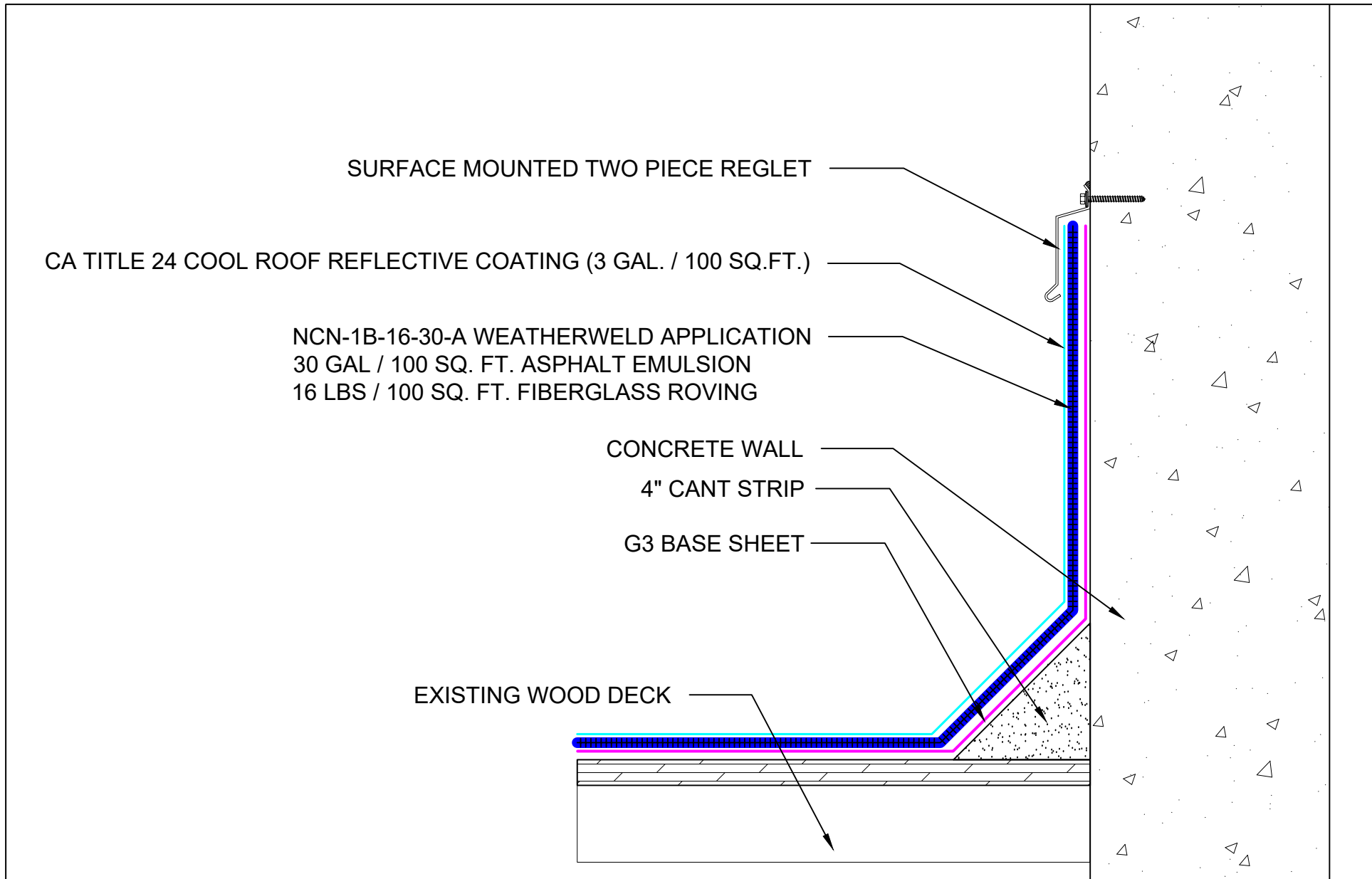
PROJECT:


APPROVED BY:
M. Jones

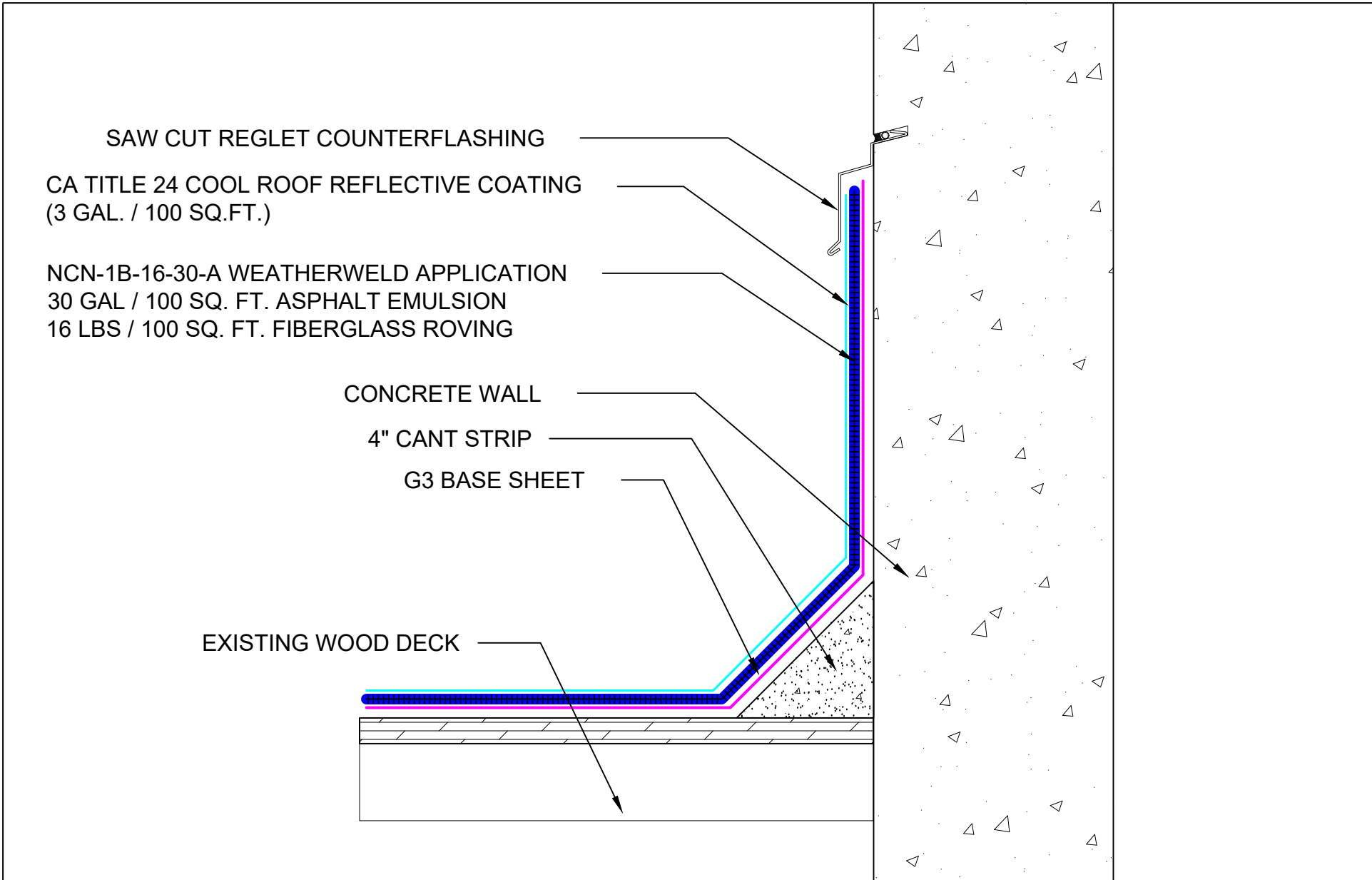
INSTALLED BY:
TBD

DATE:
1/24/24

SCALE:
3" = 1'-0"



SYSTEM: NCN-1B-16-30-A Composite Membrane Over Nailable Deck (Wood / LWIC / Poured Gypsum)	 A DIVISION OF LIQUIFORM TECHNOLOGIES, INC.	9757 7 th Street, Suite 803 Rancho Cucamonga, CA 91730-5297 (888) 440-3224 www.weatherweld.com		PREPARED FOR:	
		DRAWING TITLE: SURFACE MOUNTED COUNTERFLASHING AT CONCRETE WALL	DETAIL NUMBER: 352	DRAWN BY: R. Weygant	PROJECT:
		APPROVED BY: M. Jones	INSTALLED BY: TBD	DATE: 1/24/24	SCALE: 3" = 1'-0"



SYSTEM:
NCN-1B-16-30-A
 Composite Membrane Over
 Nailable Deck (Wood / LWIC /
 Poured Gypsum)

WEATHERWELD
 A DIVISION OF LIQUIFORM TECHNOLOGIES, INC.

9757 7th Street, Suite 803
 Rancho Cucamonga, CA 91730-5297
 (888) 440-3224 | www.weatherweld.com

DRAWING TITLE:
SAW CUT REGLET AT CONCRETE WALL

DETAIL NUMBER:
353

PREPARED FOR:

DRAWN BY:
R. Weygant

PROJECT:

APPROVED BY:
M. Jones

INSTALLED BY:
TBD

DATE:
1/24/24

SCALE:
3" = 1'-0"

CA TITLE 24 COOL ROOF REFLECTIVE COATING (3 GAL. / 100 SQ.FT.)

NCN-1B-16-30-A WEATHERWELD APPLICATION
30 GAL / 100 SQ. FT. ASPHALT EMULSION
16 LBS / 100 SQ. FT. FIBERGLASS ROVING

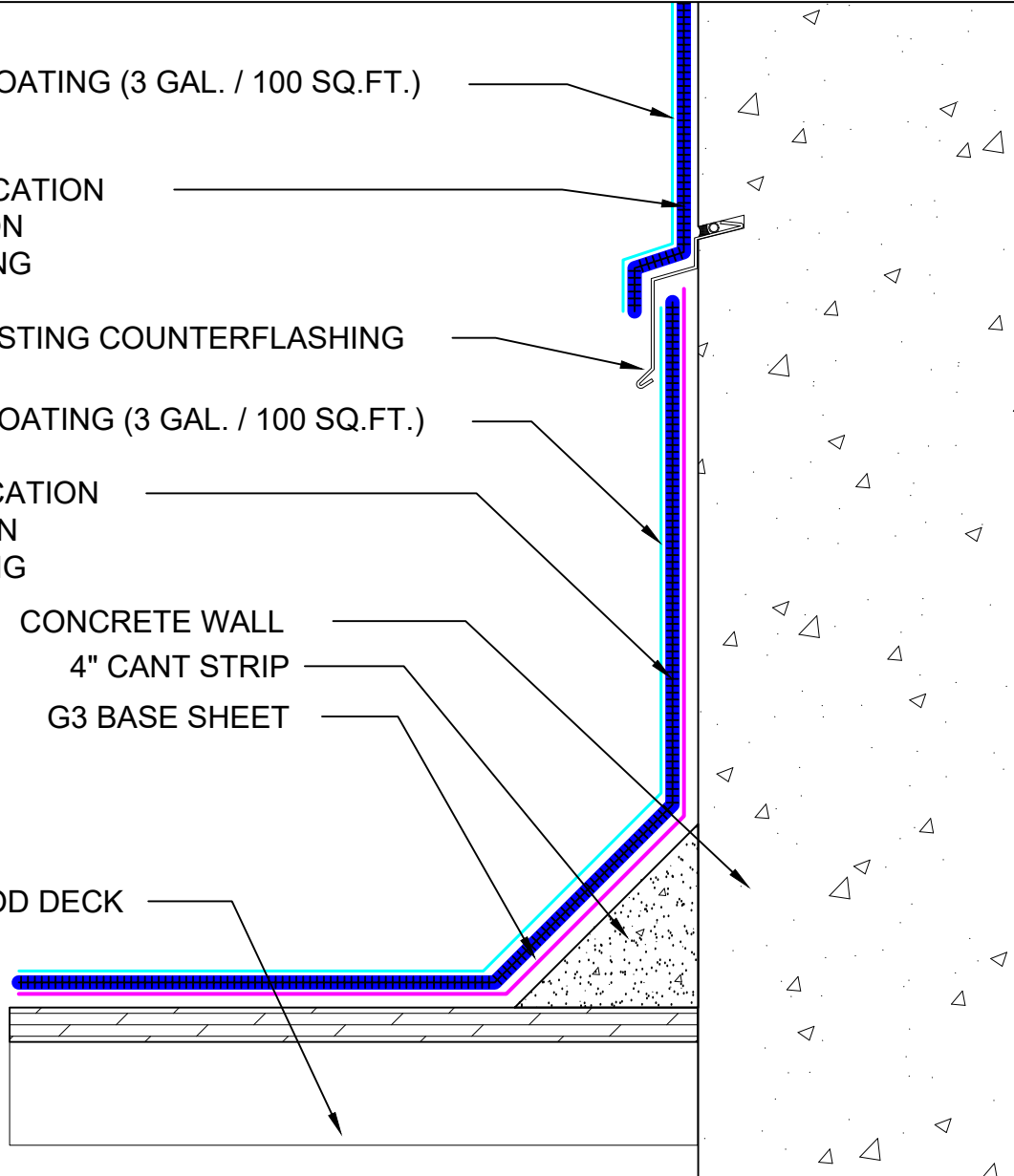
EXISTING COUNTERFLASHING

CA TITLE 24 COOL ROOF REFLECTIVE COATING (3 GAL. / 100 SQ.FT.)

NCN-1B-16-30-A WEATHERWELD APPLICATION
30 GAL / 100 SQ. FT. ASPHALT EMULSION
16 LBS / 100 SQ. FT. FIBERGLASS ROVING

CONCRETE WALL
4" CANT STRIP
G3 BASE SHEET

EXISTING WOOD DECK



SYSTEM:

NCN-1B-16-30-A

Composite Membrane Over
Nailable Deck (Wood / LWIC /
Poured Gypsum)

WEATHERWELD

A DIVISION OF LIQUIFORM TECHNOLOGIES, INC.

9757 7th Street, Suite 803
Rancho Cucamonga, CA 91730-5297
(888) 440-3224 | www.weatherweld.com

DRAWING TITLE:

**CONCRETE WALL WITH EXISTING REGLET
COUNTERFLASHING**

DETAIL NUMBER:

354

PREPARED FOR:

DRAWN BY:
R. Weygant

PROJECT:

APPROVED BY:
M. Jones

INSTALLED BY:
TBD

DATE:
1/24/24

SCALE:
3" = 1'-0"

CA TITLE 24 COOL ROOF REFLECTIVE COATING (3 GAL. / 100 SQ.FT.)

NCN-1B-16-30-A WEATHERWELD APPLICATION
30 GAL / 100 SQ. FT. ASPHALT EMULSION
16 LBS / 100 SQ. FT. FIBERGLASS ROVING

EXISTING COUNTERFLASHING

CA TITLE 24 COOL ROOF REFLECTIVE COATING (3 GAL. / 100 SQ.FT.)

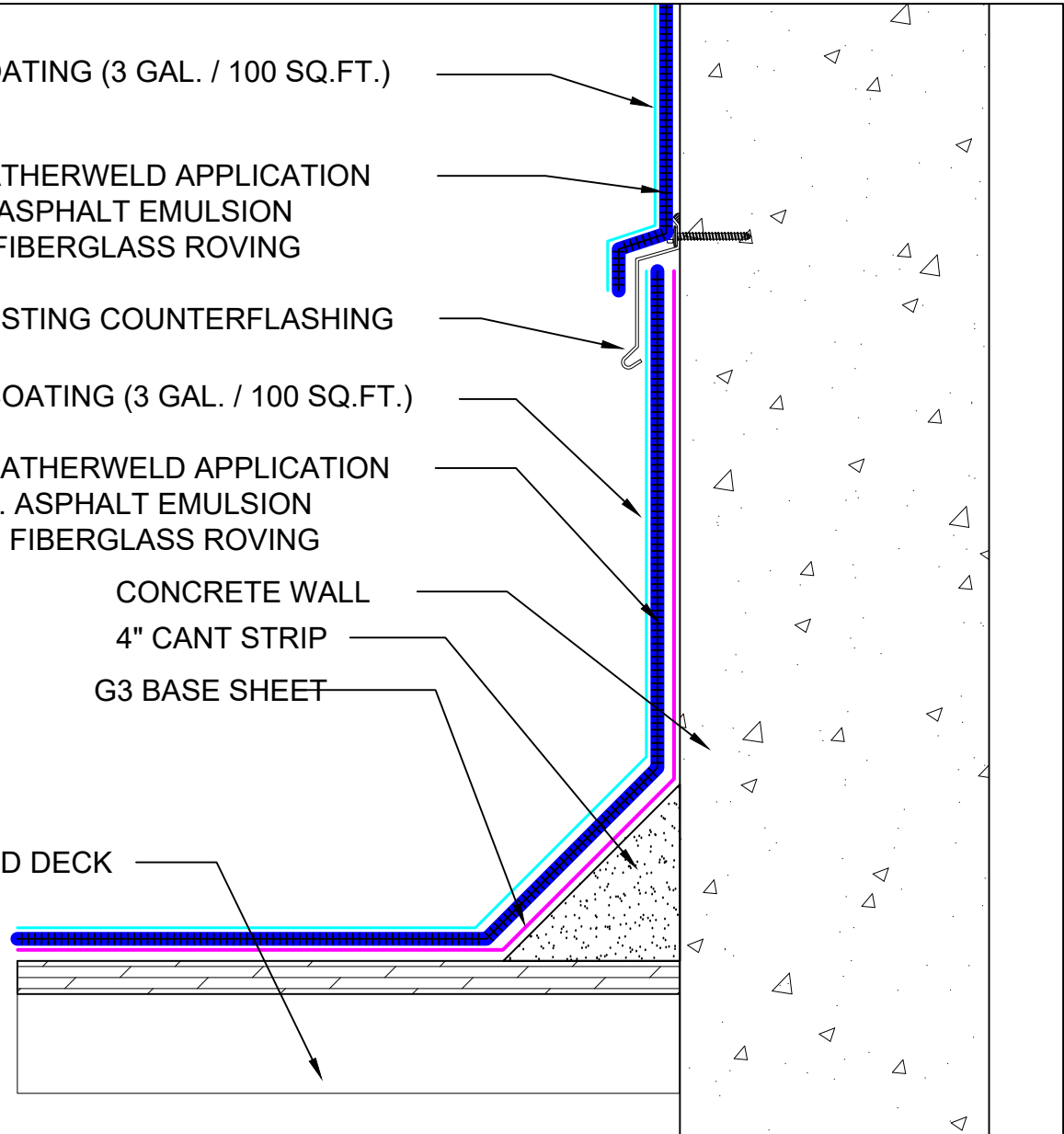
NCN-1B-16-30-A WEATHERWELD APPLICATION
30 GAL / 100 SQ. FT. ASPHALT EMULSION
16 LBS / 100 SQ. FT. FIBERGLASS ROVING

CONCRETE WALL

4" CANT STRIP

G3 BASE SHEET

EXISTING WOOD DECK



SYSTEM:

NCN-1B-16-30-A

Composite Membrane Over
Nailable Deck (Wood / LWIC /
Poured Gypsum)

WEATHERWELD

A DIVISION OF LIQUIFORM TECHNOLOGIES, INC.

9757 7th Street, Suite 803
Rancho Cucamonga, CA 91730-5297
(888) 440-3224 | www.weatherweld.com

DRAWING TITLE:

**CONCRETE WALL WITH EXISTING SURFACE
MOUNTED COUNTERFLASHING**

DETAIL NUMBER:

355

PREPARED FOR:

DRAWN BY:

R. Weygant

PROJECT:

APPROVED BY:
M. Jones

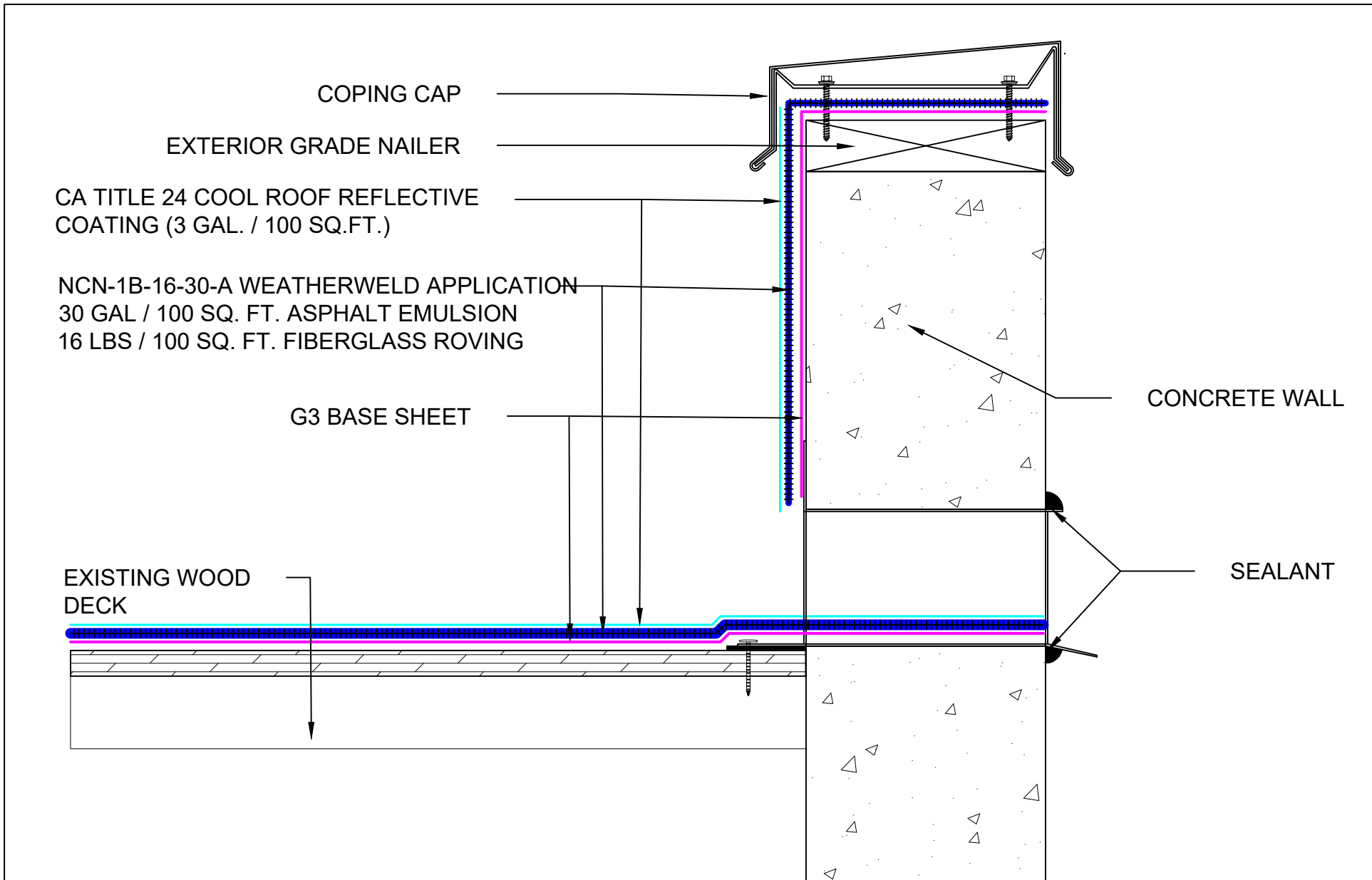
INSTALLED BY:
TBD

DATE:

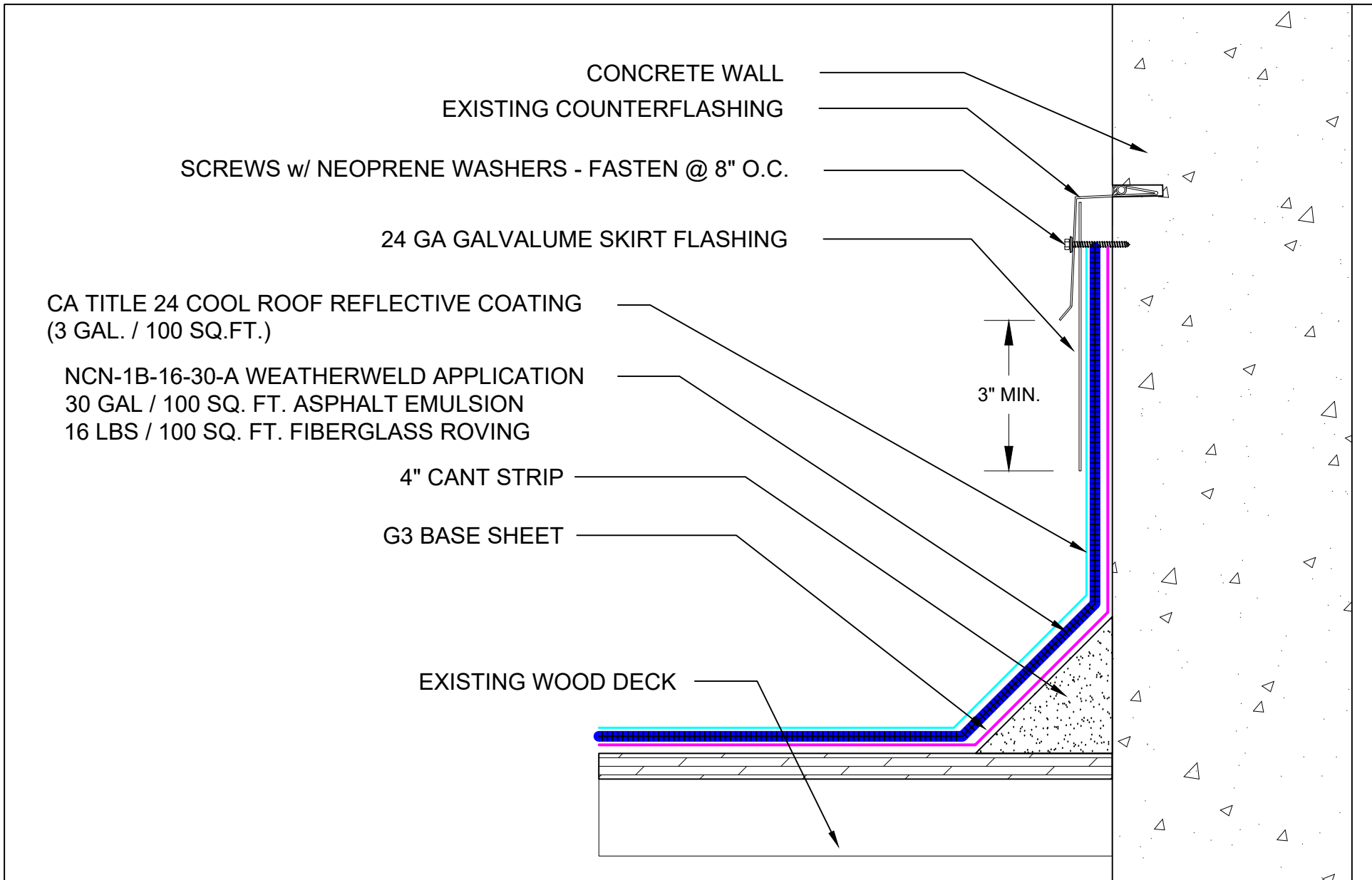
1/24/24


SCALE:

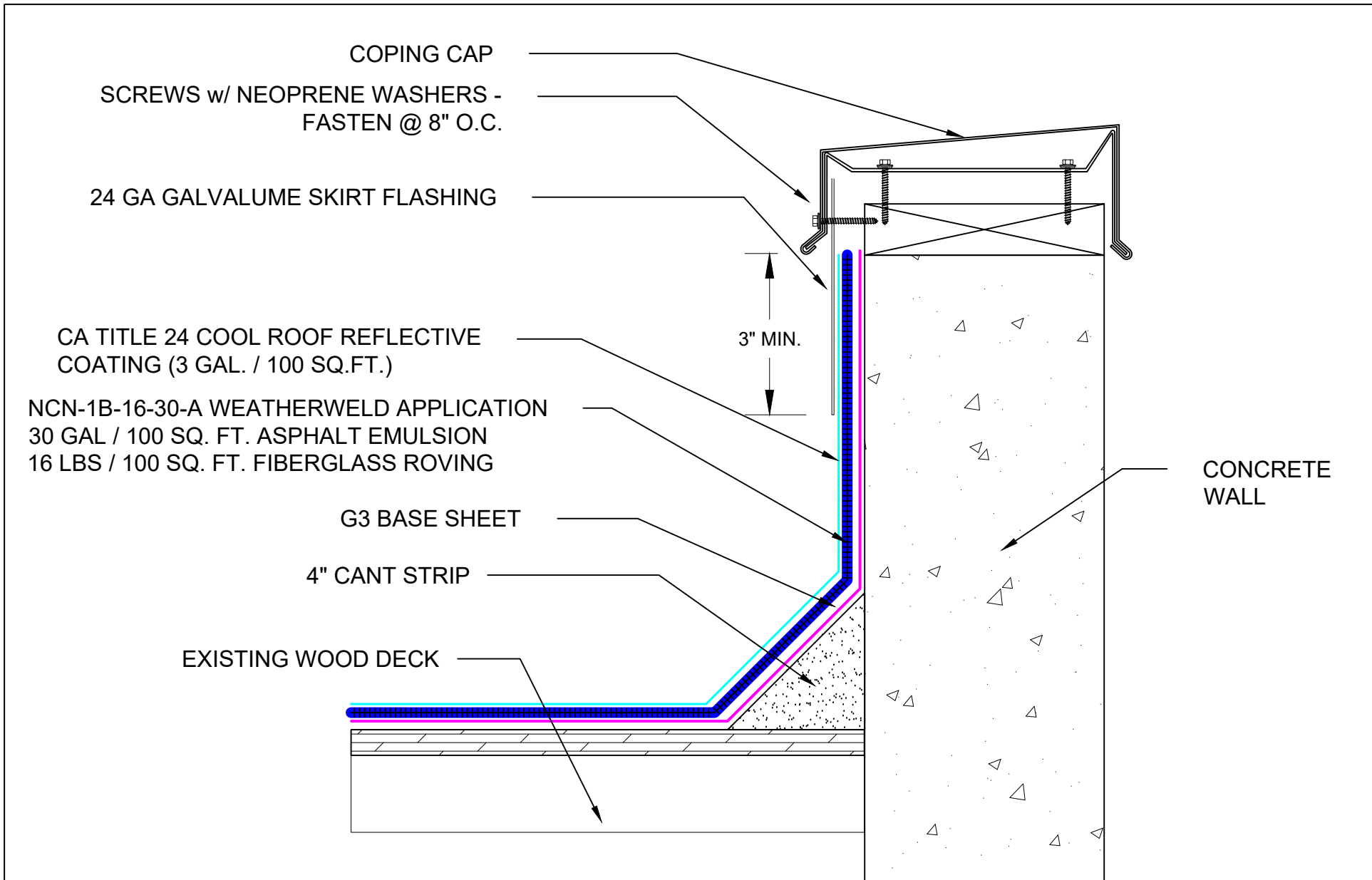
3" = 1'-0"



<p>SYSTEM:</p> <p>NCN-1B-16-30-A</p> <p>Composite Membrane Over Nailable Deck (Wood / LWIC / Poured Gypsum)</p>	<p>WEATHERWELD</p> <p>A DIVISION OF LIQUIFORM TECHNOLOGIES, INC.</p> <p>9757 7th Street, Suite 803 Rancho Cucamonga, CA 91730-5297 (888) 440-3224 www.weatherweld.com</p> <p>DRAWING TITLE: THRU WALL SCUPPER FLASHING AT CONCRETE WALL</p>	<p>PREPARED FOR:</p> <p>DRAWN BY: R. Weygant</p> <p>PROJECT:</p> <p>APPROVED BY: M. Jones</p> <p>INSTALLED BY: TBD</p> <p>DATE: 1/24/24</p> <p>SCALE: 3" = 1'-0"</p> <p>DETAIL NUMBER: 356</p>
--	--	--



SYSTEM: NCN-1B-16-30-A Composite Membrane Over Nailable Deck (Wood / LWIC / Poured Gypsum)	 <small>A DIVISION OF LIQUIFORM TECHNOLOGIES, INC.</small>	9757 7 th Street, Suite 803 Rancho Cucamonga, CA 91730-5297 (888) 440-3224 www.weatherweld.com		PREPARED FOR:	
		DRAWING TITLE: SKIRTED COUNTERFLASHING AT CONCRETE WALL	DETAIL NUMBER: 357	DRAWN BY: R. Weygant	PROJECT:
		APPROVED BY: M. Jones	INSTALLED BY: TBD	DATE: 1/24/24	SCALE: 3" = 1'-0"



SYSTEM:
NCN-1B-16-30-A
 Composite Membrane Over
 Nailable Deck (Wood / LWIC /
 Poured Gypsum)

WEATHERWELD
A DIVISION OF LIQUIFORM TECHNOLOGIES, INC.

9757 7th Street, Suite 803
 Rancho Cucamonga, CA 91730-5297
 (888) 440-3224 | www.weatherweld.com

DRAWING TITLE:
SKIRTED COPING AT CONCRETE WALL

DETAIL NUMBER:
359

PREPARED FOR:

DRAWN BY:
R. Weygant

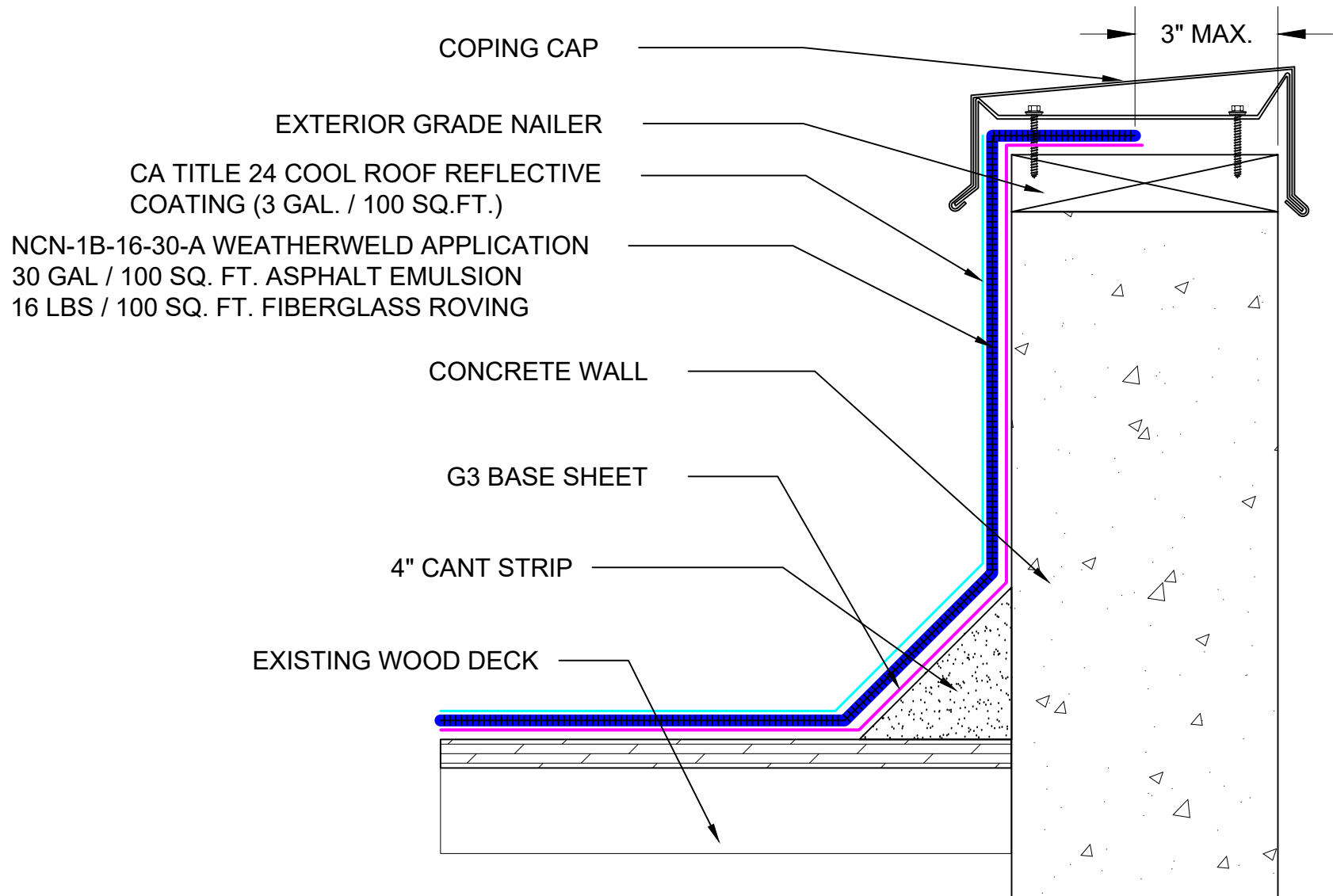
PROJECT:

APPROVED BY:
M. Jones

INSTALLED BY:
TBD

DATE:
1/24/24

SCALE:
3" = 1'-0"



SYSTEM:

NCN-1B-16-30-A

Composite Membrane Over
Nailable Deck (Wood / LWIC /
Poured Gypsum)

WEATHERWELD

A DIVISION OF LIQUIFORM TECHNOLOGIES, INC.

9757 7th Street, Suite 803
Rancho Cucamonga, CA 91730-5297
(888) 440-3224 | www.weatherweld.com

DRAWING TITLE:

COPING DETAIL AT CONCRETE WALL (ALT)

DETAIL NUMBER:

360

PREPARED FOR:

DRAWN BY:

R. Weygant

PROJECT:

APPROVED BY:
M. Jones

INSTALLED BY:
TBD

DATE:
1/24/24

SCALE:
3" = 1'-0"

EXPANSION JOINT COVER - INSTALLED IN ACCORDANCE WITH
MANUFACTURER'S RECOMMENDATIONS

EXPANSION JOINT CURB

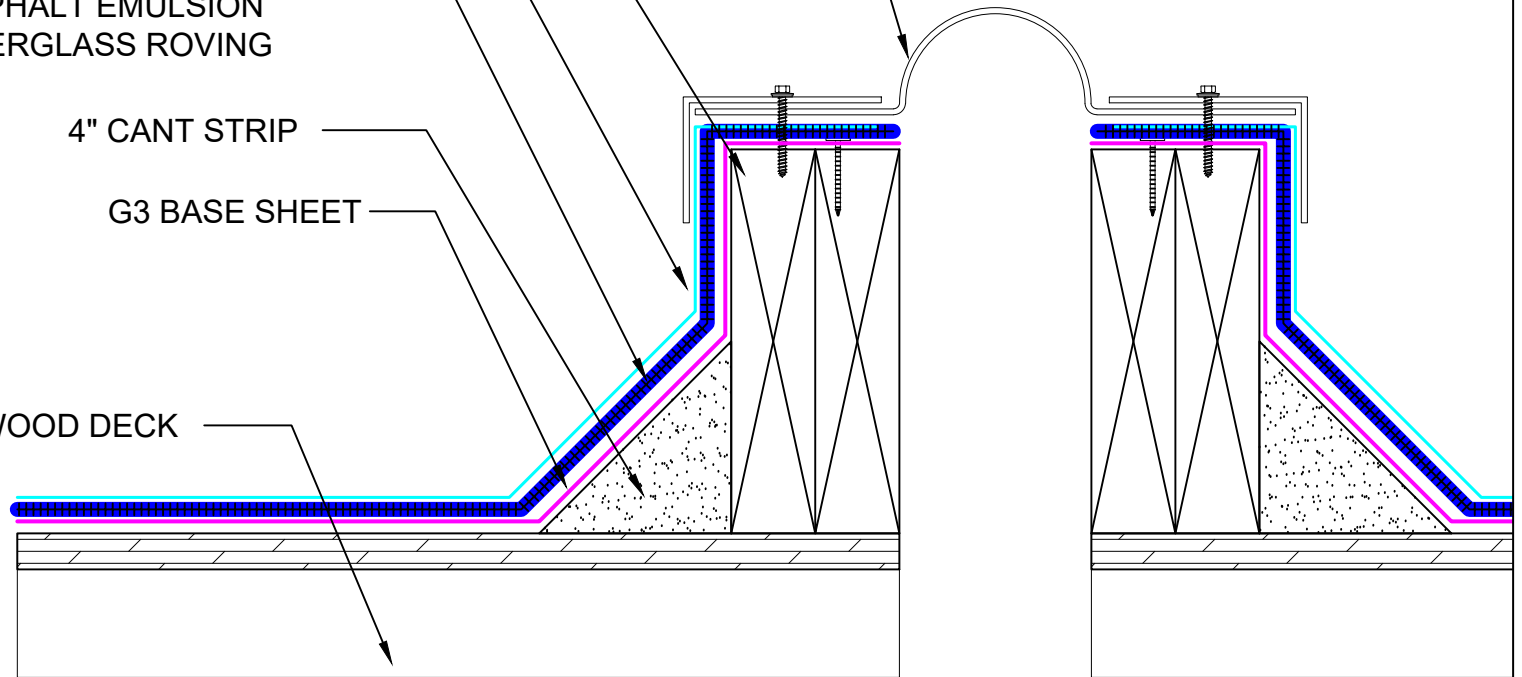
CA TITLE 24 COOL ROOF REFLECTIVE
COATING (3 GAL. / 100 SQ.FT.)

NCN-1B-16-30-A WEATHERWELD APPLICATION
30 GAL / 100 SQ. FT. ASPHALT EMULSION
16 LBS / 100 SQ. FT. FIBERGLASS ROVING

4" CANT STRIP

G3 BASE SHEET

EXISTING WOOD DECK



SYSTEM:

NCN-1B-16-30-A

Composite Membrane Over
Nailable Deck (Wood / LWIC /
Poured Gypsum)

WEATHERWELD

A DIVISION OF LIQUIFORM TECHNOLOGIES, INC.

9757 7th Street, Suite 803
Rancho Cucamonga, CA 91730-5297
(888) 440-3224 | www.weatherweld.com

DRAWING TITLE:

EXPANSION JOINT

DETAIL NUMBER:

401

PREPARED FOR:

DRAWN BY:

R. Weygant

PROJECT:

APPROVED BY:
M. Jones

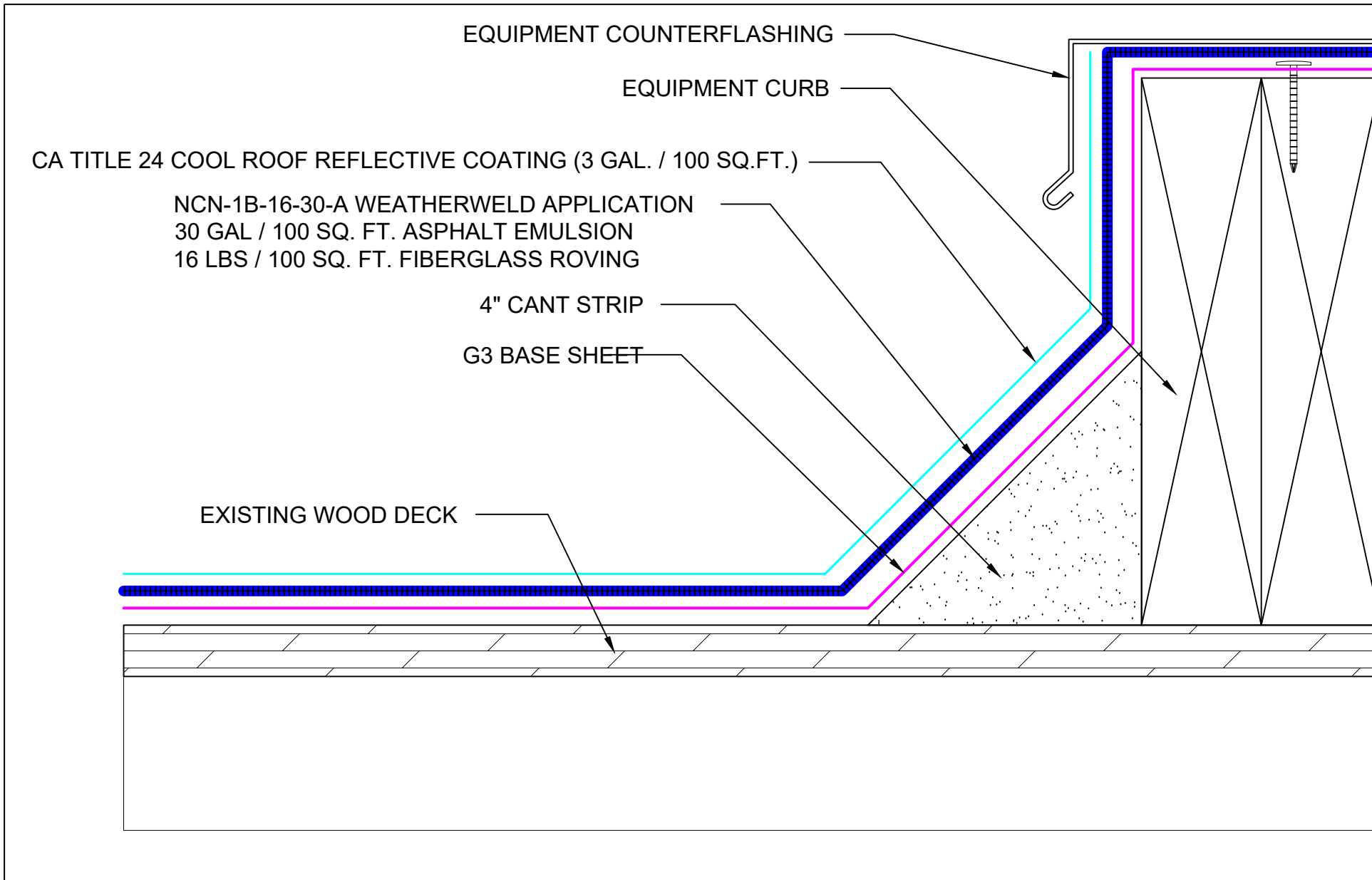
INSTALLED BY:
TBD


DATE:

1/24/24

SCALE:

3" = 1'-0"



SYSTEM: NCN-1B-16-30-A Composite Membrane Over Nailable Deck (Wood / LWIC / Poured Gypsum)	 <small>A DIVISION OF LIQUIFORM TECHNOLOGIES, INC.</small>	9757 7 th Street, Suite 803 Rancho Cucamonga, CA 91730-5297 (888) 440-3224 www.weatherweld.com	PREPARED FOR:			
			DRAWING TITLE: EQUIPMENT CURB FLASHING	DETAIL NUMBER: 402	DRAWN BY: R. Weygant	PROJECT:
			APPROVED BY: M. Jones	INSTALLED BY: TBD	DATE: 1/24/24	SCALE: 6" = 1'-0"

UNIT SKYLIGHT - FASTENED IN ACCORDANCE WITH SKYLIGHT MANUFACTURERS' RECOMMENDATIONS

SKYLIGHT CURB

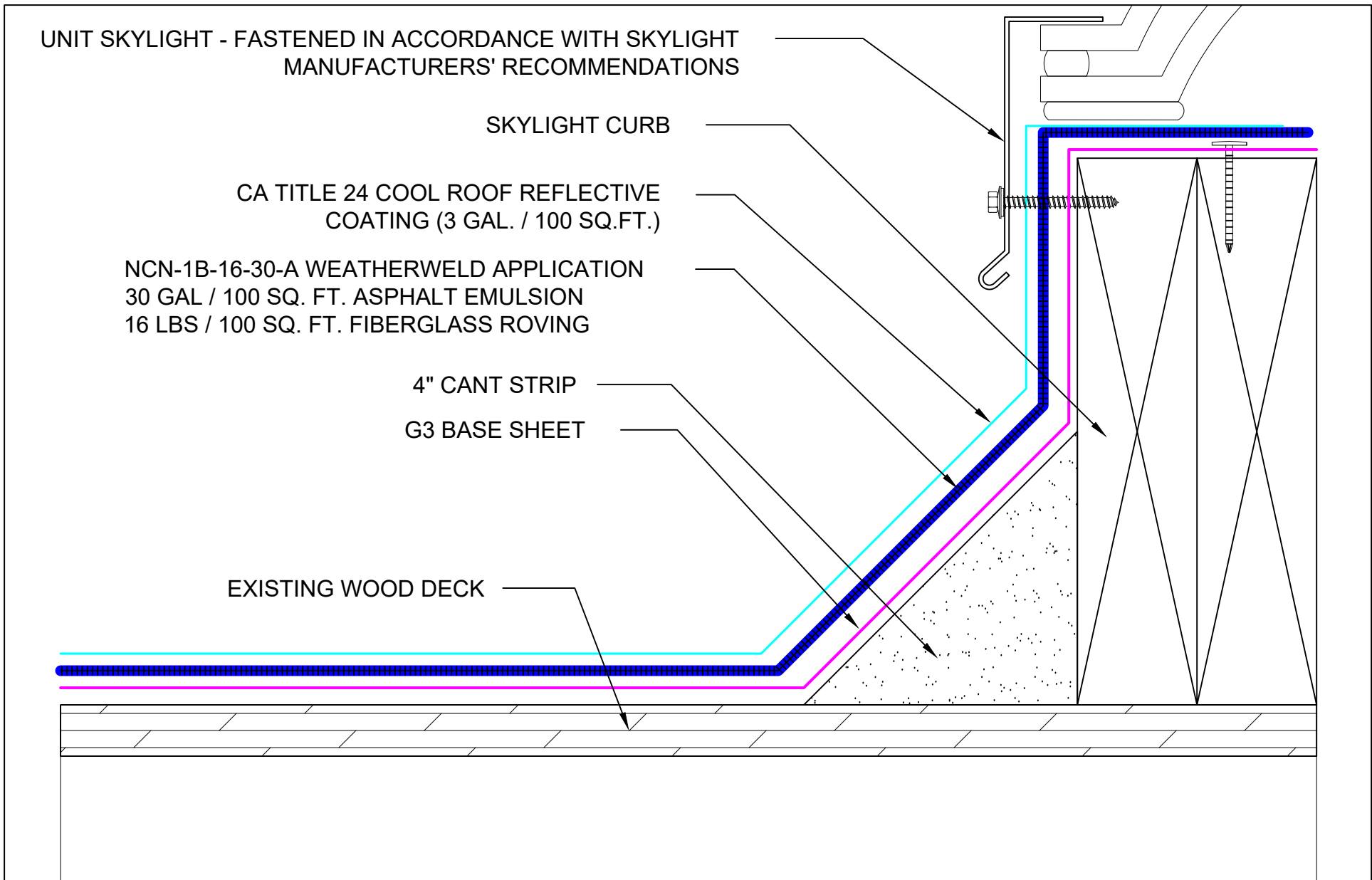
CA TITLE 24 COOL ROOF REFLECTIVE COATING (3 GAL. / 100 SQ.FT.)

NCN-1B-16-30-A WEATHERWELD APPLICATION
 30 GAL / 100 SQ. FT. ASPHALT EMULSION
 16 LBS / 100 SQ. FT. FIBERGLASS ROVING

4" CANT STRIP

G3 BASE SHEET

EXISTING WOOD DECK



SYSTEM:
NCN-1B-16-30-A
 Composite Membrane Over
 Nailable Deck (Wood / LWIC /
 Poured Gypsum)

WEATHERWELD
A DIVISION OF LIQUIFORM TECHNOLOGIES, INC.
 9757 7th Street, Suite 803
 Rancho Cucamonga, CA 91730-5297
 (888) 440-3224 | www.weatherweld.com

DRAWING TITLE:
CURB MOUNTED SKYLIGHT FLASHING

DETAIL NUMBER:
403

PREPARED FOR:

DRAWN BY:
R. Weygant

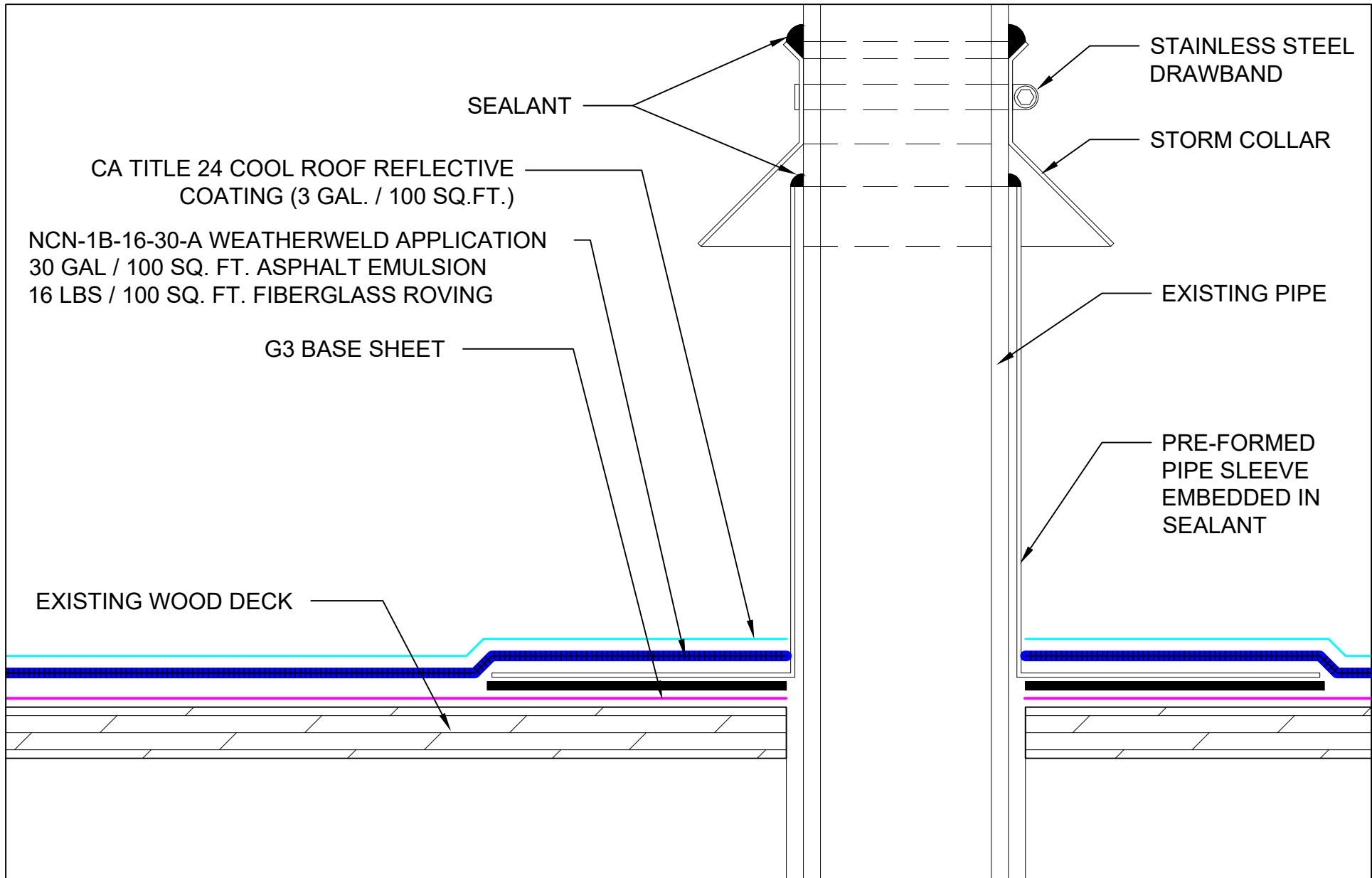
PROJECT:

APPROVED BY:
M. Jones

INSTALLED BY:
TBD

DATE:
1/24/24

SCALE:
6" = 1'-0"



SEALANT

CA TITLE 24 COOL ROOF REFLECTIVE COATING (3 GAL. / 100 SQ.FT.)

NCN-1B-16-30-A WEATHERWELD APPLICATION
30 GAL / 100 SQ. FT. ASPHALT EMULSION
16 LBS / 100 SQ. FT. FIBERGLASS ROVING

G3 BASE SHEET

EXISTING WOOD DECK

STAINLESS STEEL DRAWBAND

STORM COLLAR

EXISTING PIPE

PRE-FORMED PIPE SLEEVE EMBEDDED IN SEALANT

SYSTEM:
NCN-1B-16-30-A
Composite Membrane Over Nailable Deck (Wood / LWIC / Poured Gypsum)



9757 7th Street, Suite 803
Rancho Cucamonga, CA 91730-5297
(888) 440-3224 | www.weatherweld.com

PREPARED FOR:

DRAWING TITLE:
PIPE PENETRATION FLASHING

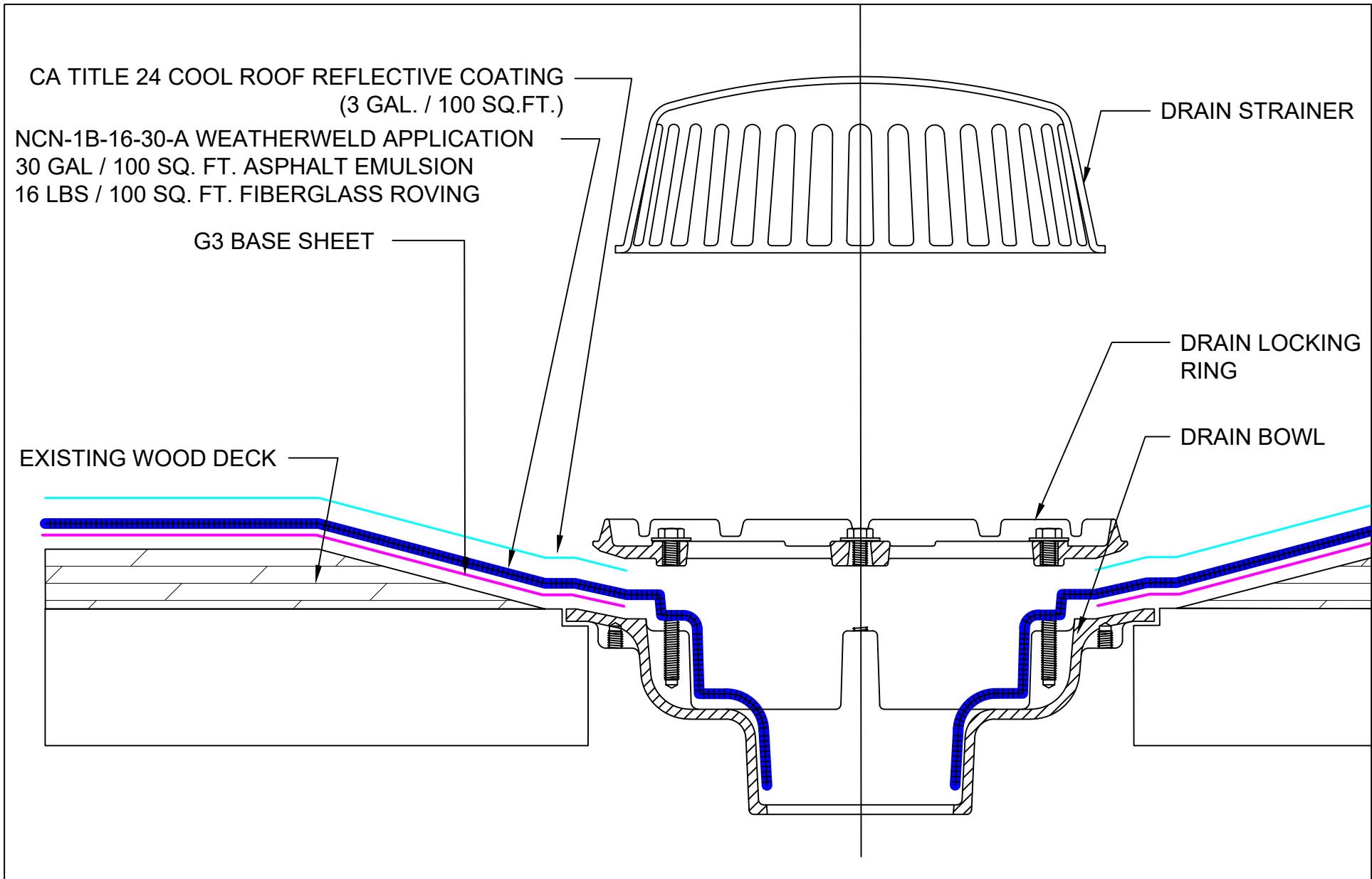
DETAIL NUMBER:
501


DRAWN BY:
R. Weygant
APPROVED BY:
M. Jones

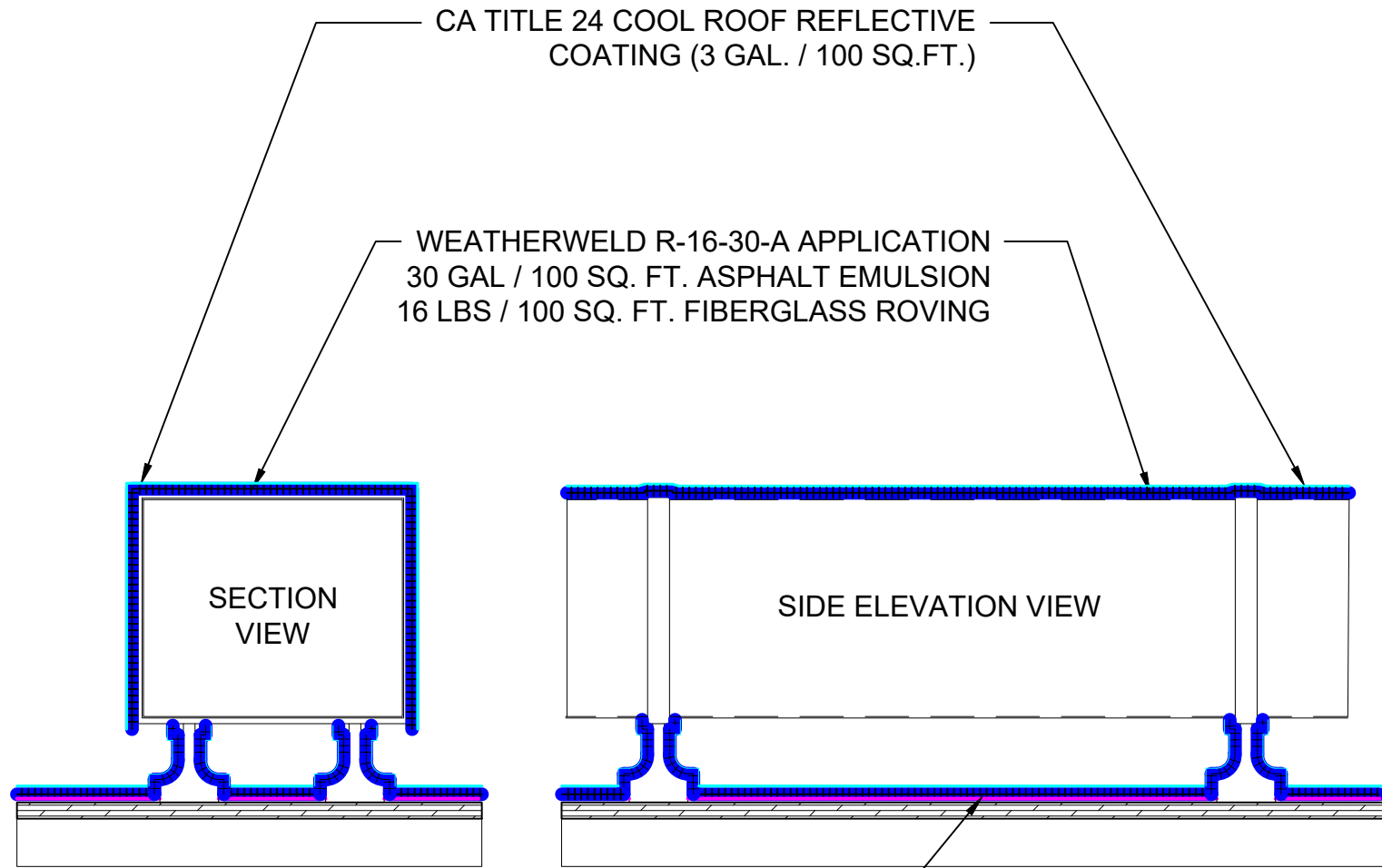
PROJECT:
INSTALLED BY:
TBD

DATE:
1/24/24


SCALE:
6" = 1'-0"



SYSTEM: NCN-1B-16-30-A Composite Membrane Over Nailable Deck (Wood / LWIC / Poured Gypsum)	 <small>A DIVISION OF LIQUIFORM TECHNOLOGIES, INC.</small>	9757 7 th Street, Suite 803 Rancho Cucamonga, CA 91730-5297 (888) 440-3224 www.weatherweld.com		PREPARED FOR:	
		DRAWING TITLE: DRAIN DETAIL	DETAIL NUMBER: 502	DRAWN BY: R. Weygant	PROJECT:
		APPROVED BY: M. Jones	INSTALLED BY: TBD	DATE: 1/24/24	SCALE: 6" = 1'-0"



SPECIFIED WEATHERWELD ROOF SYSTEM

SYSTEM: NCN-1B-16-30-A Composite Membrane Over Nailable Deck (Wood / LWIC / Poured Gypsum)	 <small>A DIVISION OF LIQUIFORM TECHNOLOGIES, INC.</small>	9757 7 th Street, Suite 803 Rancho Cucamonga, CA 91730-5297 (888) 440-3224 www.weatherweld.com	PREPARED FOR:			
			DRAWING TITLE: ROOFTOP DUCT ENCAPSULATION	DETAIL NUMBER: 503	DRAWN BY: R. Weygant	PROJECT:
			APPROVED BY: M. Jones	INSTALLED BY: TBD	DATE: 1/24/24	SCALE: 1 1/2" = 1'-0"